

For Research Use Only

CRK Monoclonal antibody

Catalog Number: 67035-1-Ig



Basic Information

Catalog Number: 67035-1-Ig	GenBank Accession Number: BC008506	Purification Method: Protein G purification
Size: 150ul , Concentration: 1600 ug/ml by Nanodrop and 1000 ug/ml by Bradford method using BSA as the standard;	GeneID (NCBI): 1398	CloneNo.: 2B7E1
Source: Mouse	UNIPROT ID: P46108	Recommended Dilutions: WB 1:1000-1:6000
Isotype: IgG1	Full Name: v-crk sarcoma virus CT10 oncogene homolog (avian)	
Immunogen Catalog Number: AG28793	Calculated MW: 34 kDa	
	Observed MW: 34 kDa	

Applications

Tested Applications: WB, ELISA	Positive Controls:
Species Specificity: human, mouse, rat	WB : HEK-293 cells, HeLa cells, HSC-T6 cells, Jurkat cells, NIH/3T3 cells, RAW 264.7 cells

Background Information

CRK is a member of an adapter protein family that binds to several tyrosine-phosphorylated proteins. CRK has several SH2 and SH3 domains (src-homology domains) and is involved in several signaling pathways, recruiting cytoplasmic proteins in the vicinity of tyrosine kinase through SH2-phosphotyrosine interaction. The N-terminal SH2 domain of this protein functions as a positive regulator of transformation whereas the C-terminal SH3 domain functions as a negative regulator of transformation.

Storage

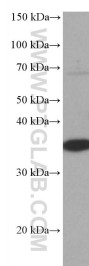
Storage:
Store at -20°C. Stable for one year after shipment.
Storage Buffer:
PBS with 0.02% sodium azide and 50% glycerol, pH7.3
Aliquoting is unnecessary for -20°C storage

*** 20ul sizes contain 0.1% BSA

For technical support and original validation data for this product please contact:
T: 1 (888) 4PTGLAB (1-888-478-4522) (toll free in USA), or 1(312) 455-8498 (outside USA)
E: proteintech@ptglab.com
W: ptglab.com

This product is exclusively available under Proteintech Group brand and is not available to purchase from any other manufacturer.

Selected Validation Data



HEK-293 cells were subjected to SDS PAGE followed by western blot with 67035-1-Ig (CRK antibody) at dilution of 1:3000 incubated at room temperature for 1.5 hours.