

DNASE1L3 Monoclonal antibody

Catalog Number: 67041-1-Ig 2 Publications

Basic Information

Catalog Number: 67041-1-Ig	GenBank Accession Number: BC015831	Purification Method: Protein A purification
Size: 150ul, Concentration: 2100 ug/ml by Nanodrop and 1000 ug/ml by Bradford method using BSA as the standard;	GeneID (NCBI): 1776	CloneNo.: 1A4D4
Source: Mouse	UNIPROT ID: Q13609	Recommended Dilutions: WB: 1:500-1:2000 IHC: 1:50-1:500
Isotype: IgG2a	Full Name: deoxyribonuclease I-like 3	
Immunogen Catalog Number: AG28187	Calculated MW: 305 aa, 36 kDa	
	Observed MW: 33-38 kDa	

Applications

Tested Applications: WB, IHC, ELISA	Positive Controls:
Cited Applications: WB, IHC	WB : HEK-293 cells, U2OS cells, Daudi cells, A431 cells, LnCaP cells, Jurkat cells, K-562 cells, HepG2 cells, Raji cells
Species Specificity: Human, mouse	IHC : mouse liver tissue, human spleen tissue
Cited Species: human	
Note-IHC: suggested antigen retrieval with TE buffer pH 9.0; (*) Alternatively, antigen retrieval may be performed with citrate buffer pH 6.0	

Background Information

Deoxyribonuclease 1-like 3 (DNASE1L3, DNase gamma, DNase Y, LS-DNase) is member of a DNASE1 protein family that is identified by similar biochemical properties such as Ca²⁺/Mg²⁺- dependency and an optimal pH of about 7.0 as well as by a high similarity in their nucleic acid and amino acid sequences (PMID:157967140). It is an endonuclease and cleaves double-stranded DNA (and single-stranded DNA) producing 3'-OH/5'-P ends, which is Ca²⁺/Mg²⁺-dependent and inhibited by Zn²⁺, but not by monomeric actin (PMID:9665719). In addition, it translocates from the endoplasmic reticulum to the nucleus during apoptosis (PMID: 23229555). DNASE1L3 can be located either in the cytoplasm or in the nucleus.

Notable Publications

Author	Pubmed ID	Journal	Application
Jing Liu	34157681	Aging (Albany NY)	WB
Enkui Zhang	40065365	J Transl Med	WB, IHC

Storage

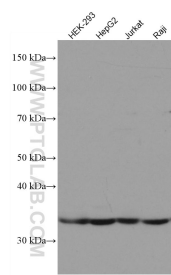
Storage:
Store at -20°C. Stable for one year after shipment.
Storage Buffer:
PBS with 0.02% sodium azide and 50% glycerol, pH7.3
 Aliquoting is unnecessary for -20°C storage

*** 20ul sizes contain 0.1% BSA

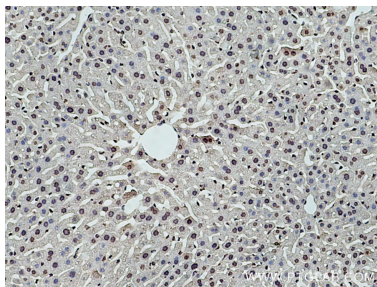
For technical support and original validation data for this product please contact:
 T: 1 (888) 4PTGLAB (1-888-478-4522) (toll free in USA), or 1(312) 455-8498 (outside USA)
 E: proteintech@ptglab.com
 W: ptglab.com

This product is exclusively available under Proteintech Group brand and is not available to purchase from any other manufacturer.

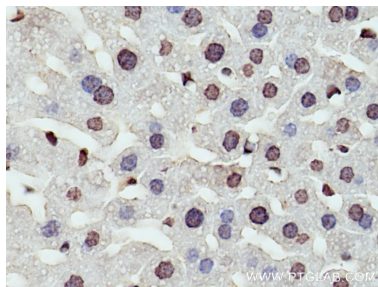
Selected Validation Data



Various lysates were subjected to SDS PAGE followed by western blot with 67041-1-Ig (DNASE1L3 antibody) at dilution of 1:1000 incubated at room temperature for 1.5 hours.



Immunohistochemical analysis of paraffin-embedded mouse liver tissue slide using 67041-1-Ig (DNASE1L3 antibody) at dilution of 1:200 (under 10x lens). Heat mediated antigen retrieval with Tris-EDTA buffer (pH 9.0).



Immunohistochemical analysis of paraffin-embedded mouse liver tissue slide using 67041-1-Ig (DNASE1L3 antibody) at dilution of 1:200 (under 40x lens). Heat mediated antigen retrieval with Tris-EDTA buffer (pH 9.0).