

For Research Use Only

Cyclin H Monoclonal antibody

Catalog Number: 67065-1-Ig **2 Publications**



Basic Information

Catalog Number: 67065-1-Ig	GenBank Accession Number: BC005280	Purification Method: Protein A purification
Size: 150ul , Concentration: 2200 ug/ml by 902 Nanodrop and 1000 ug/ml by Bradford method using BSA as the standard;	GeneID (NCBI): P51946	CloneNo.: 2C5G11
Source: Mouse	UNIPROT ID: P51946	Recommended Dilutions: WB: 1:2000-1:10000 IHC: 1:500-1:1000 IF/ICC: 1:200-1:800 FC (Intra): 0.40 ug per 10 ⁶ cells in a 100 µl suspension
Isotype: IgG2a	Full Name: cyclin H	
Immunogen Catalog Number: AG28556	Calculated MW: 38 kDa	
	Observed MW: 38 kDa	

Applications

Tested Applications: WB, IHC, IF/ICC, FC (Intra), ELISA	Positive Controls: WB : HeLa cells, HEK-293 cells, HepG2 cells, Jurkat cells, HSC-T6 cells, MCF-7 cells, NCCIT cells, HT-1080 cells, LNCaP cells IHC : human breast cancer tissue, IF/ICC : PC-3 cells, FC (Intra) : PC-3 cells,
Cited Applications: WB	
Species Specificity: human, mouse, rat	
Cited Species: mouse	
Note-IHC: suggested antigen retrieval with TE buffer pH 9.0; (*) Alternatively, antigen retrieval may be performed with citrate buffer pH 6.0	

Notable Publications

Author	Pubmed ID	Journal	Application
Zhe Yang	36229075	Genes Dev	WB
Lisha Yin	40720760	Adv Sci (Weinh)	WB

Storage

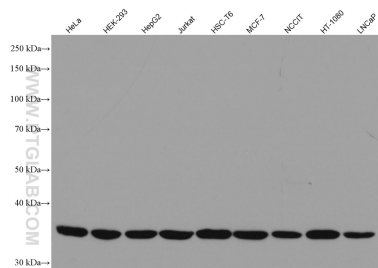
Storage:
Store at -20°C. Stable for one year after shipment.
Storage Buffer:
PBS with 0.02% sodium azide and 50% glycerol, pH7.3
Aliquoting is unnecessary for -20°C storage

*** 20ul sizes contain 0.1% BSA

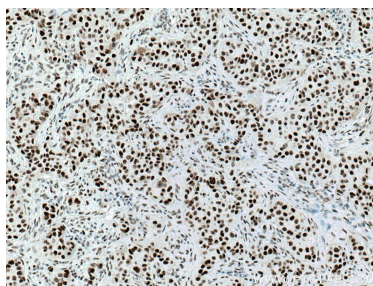
For technical support and original validation data for this product please contact:
T: 1 (888) 4PTGLAB (1-888-478-4522) (toll free in USA), or 1(312) 455-8498 (outside USA)
E: proteintech@ptglab.com
W: ptglab.com

This product is exclusively available under Proteintech Group brand and is not available to purchase from any other manufacturer.

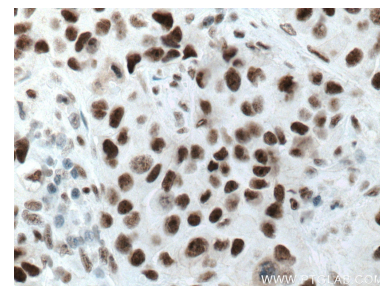
Selected Validation Data



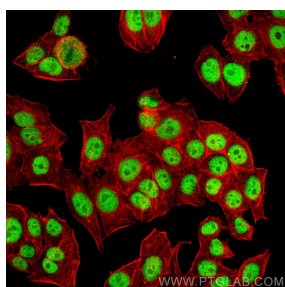
Various lysates were subjected to SDS PAGE followed by western blot with 67065-1-Ig (Cyclin H antibody) at dilution of 1:10000 incubated at room temperature for 1.5 hours.



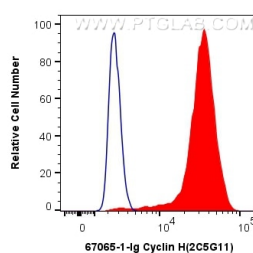
Immunohistochemical analysis of paraffin-embedded human breast cancer tissue slide using 67065-1-Ig (Cyclin H antibody) at dilution of 1:800 (under 10x lens. Heat mediated antigen retrieval with Tris-EDTA buffer (pH 9.0)).



Immunohistochemical analysis of paraffin-embedded human breast cancer tissue slide using 67065-1-Ig (Cyclin H antibody) at dilution of 1:800 (under 40x lens. Heat mediated antigen retrieval with Tris-EDTA buffer (pH 9.0)).



Immunofluorescent analysis of (4% PFA) fixed PC-3 cells using Cyclin H antibody (67065-1-Ig, Clone: 2C5G11) at dilution of 1:400 and CoraLite®488-Conjugated Goat Anti-Mouse IgG(H+L), CL594-Phalloidin (red).



1X10⁶ PC-3 cells were intracellularly stained with 0.4 ug Anti-Human Cyclin H (67065-1-Ig, Clone:2C5G11) and CoraLite®488-Conjugated Goat Anti-Mouse IgG(H+L) at dilution 1:1000 (red), or 0.4 ug Mouse IgG2a Isotype Control (C1.18.4) (65208-1-Ig, Clone: C1.18.4) (blue). Cells were fixed and permeabilized with Transcription Factor Staining Buffer Kit (PF00011).