

For Research Use Only

EAAT2 Monoclonal antibody

Catalog Number: 67083-1-Ig **2 Publications**



Basic Information

Catalog Number: 67083-1-Ig	GenBank Accession Number: BC132768	Purification Method: Protein G purification
Size: 150ul , Concentration: 1400 ug/ml by Nanodrop and 800 ug/ml by Bradford method using BSA as the standard;	GeneID (NCBI): 6506	CloneNo.: 1C8D10
Source: Mouse	UNIPROT ID: P43004	Recommended Dilutions: WB: 1:1000-1:8000
Isotype: IgG1	Full Name: solute carrier family 1 (glial high affinity glutamate transporter), member 2	
Immunogen Catalog Number: AG19816	Calculated MW: 574 aa, 62 kDa	
	Observed MW: 60-70 kDa	

Applications

Tested Applications: WB, ELISA	Positive Controls: WB : rat brain tissue, rat cerebellum tissue, mouse brain tissue
Cited Applications: WB, IF	
Species Specificity: human, mouse, rat	
Cited Species: mouse	

Background Information

EAAT2 (also known as GLT-1), is encoded by SLC1A2 and is a glutamate transporter which can clear the majority of extracellular glutamate in brain and prevent brain seizures. Three isoforms of EAAT2 exist due to the alternative splicing. In addition to the 65-70 kDa monomer form, 130-150 kDa dimer of EAAT2 can also be observed on SDS-PAGE. (PMID: 22114258)

Notable Publications

Author	Pubmed ID	Journal	Application
Jing Xu	39952243	Neuron	IF
Jing Yan	38325382	Cell Rep Med	WB

Storage

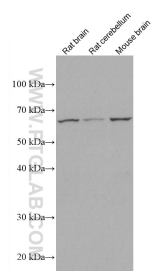
Storage:
Store at -20°C. Stable for one year after shipment.
Storage Buffer:
PBS with 0.02% sodium azide and 50% glycerol, pH7.3
Aliquoting is unnecessary for -20°C storage

*** 20ul sizes contain 0.1% BSA

For technical support and original validation data for this product please contact:
T: 1 (888) 4PTGLAB (1-888-478-4522) (toll free in USA), or 1(312) 455-8498 (outside USA)
E: proteintech@ptglab.com
W: ptglab.com

This product is exclusively available under Proteintech Group brand and is not available to purchase from any other manufacturer.

Selected Validation Data



Various lysates were subjected to SDS PAGE followed by western blot with 67083-1-Ig (SLC1A2 antibody) at dilution of 1:4000 incubated at room temperature for 1.5 hours.