

For Research Use Only

ASAH1 Monoclonal ANTIBODY



Catalog Number: 67092-1-Ig

Basic Information

Catalog Number: 67092-1-Ig	GenBank Accession Number: BC016828	Purification Method: Protein G purification
Size: 150UL, Concentration: 500 µg/ml by Bradford method using BSA as the standard;	GeneID (NCBI): 427	CloneNo.: 1B7E4
Source: Mouse	Full Name: N-acylsphingosine amidohydrolase (acid ceramidase) 1	Recommended Dilutions: WB 1:1000-1:8000 IHC 1:50-1:500 IF 1:50-1:500
IsoType: IgG1	Calculated MW: 44 kDa	
Immunogen Catalog Number: AG28645	Observed MW: 55 kDa	

Applications

Tested Applications:

IF, IHC, WB, ELISA

Species Specificity:

Human, Mouse, Rat, Pig

Note-IHC: suggested antigen retrieval with TE buffer pH 9.0; (*) Alternatively, antigen retrieval may be performed with citrate buffer pH 6.0

Positive Controls:

WB: rat cerebellum tissue, rat brain tissue, mouse brain tissue, pig cerebellum tissue

IHC: human breast cancer tissue,

IF: SH-SY5Y cells,

Background Information

ASAH1, also named as AC, ACDase, Acid CDase, PHP32 and ASAH, belongs to the acid ceramidase family. It is a 32 kDa heart protein. ASAH1 is a lipid hydrolase that catalyzes the conversion of ceramide (cer) into sphingosine (SPH) and a free fatty acid. Mutation of ASAH1 will cause the Farber lipogranulomatosis (FL) which also known as Farber disease (FD). ASAH1 is highly expressed in Heart. And it is first synthesized as an 55-60 kDa precursor and subsequently processed to the mature, heterodimeric enzyme (40 + 13 kDa) in the endosomes/lysosomes.

Storage

Storage:

Store at -20°C.

Storage Buffer:

PBS with 0.1% sodium azide and 50% glycerol pH 7.3.

Aliquoting is unnecessary for -20°C storage

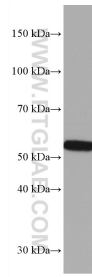
For technical support and original validation data for this product please contact:

T: 1 (888) 4PTGLAB (1-888-478-4522) (toll free in USA), or 1(312) 455-8498 (outside USA)

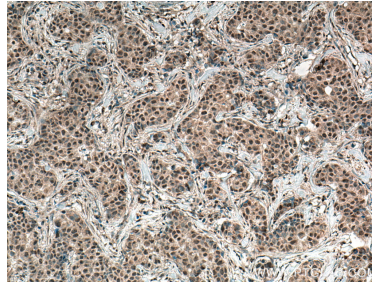
E: proteintech@ptglab.com
W: ptglab.com

This product is exclusively available under Proteintech Group brand and is not available to purchase from any other manufacturer.

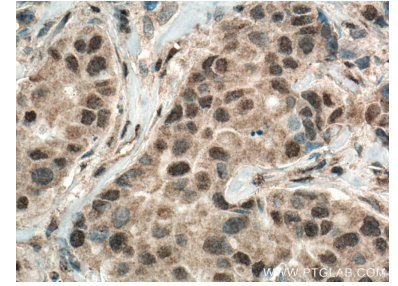
Selected Validation Data



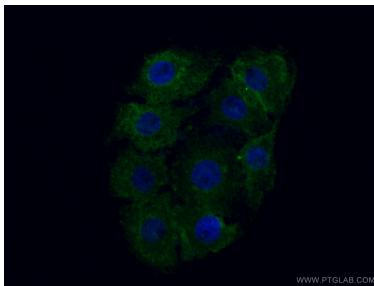
rat cerebellum tissue were subjected to SDS PAGE followed by western blot with 67092-1-Ig (ASAH1 antibody) at dilution of 1:4000 incubated at room temperature for 1.5 hours.



Immunohistochemical analysis of paraffin-embedded human breast cancer tissue slide using 67092-1-Ig (ASAH1 antibody) at dilution of 1:200 (under 10x lens. Heat mediated antigen retrieval with Tris-EDTA buffer (pH 9.0).



Immunohistochemical analysis of paraffin-embedded human breast cancer tissue slide using 67092-1-Ig (ASAH1 antibody) at dilution of 1:200 (under 40x lens. Heat mediated antigen retrieval with Tris-EDTA buffer (pH 9.0).



Immunofluorescent analysis of (4% PFA) fixed SH-SY5Y cells using 67092-1-Ig (ASAH1 antibody) at dilution of 1:100 and Coralite488-Conjugated AffiniPure Goat Anti-Mouse IgG(H+L).