

For Research Use Only

# CYP3A4 Monoclonal antibody

Catalog Number: 67110-1-Ig **4 Publications**



## Basic Information

<b>Catalog Number:</b> 67110-1-Ig	<b>GenBank Accession Number:</b> BC101631	<b>Purification Method:</b> Protein G purification
<b>Size:</b> 150ul, Concentration: 2000 ug/ml by Nanodrop and 1005 ug/ml by Bradford method using BSA as the standard;	<b>GeneID (NCBI):</b> 1576	<b>CloneNo.:</b> 2F11C4
<b>Source:</b> Mouse	<b>UNIPROT ID:</b> P08684	<b>Recommended Dilutions:</b> WB 1:5000-1:50000 IHC 1:300-1:1200 IF-P 1:200-1:800 IF/ICC 1:400-1:1600
<b>Isotype:</b> IgG1	<b>Full Name:</b> cytochrome P450, family 3, subfamily A, polypeptide 4	
<b>Immunogen Catalog Number:</b> AG13074	<b>Calculated MW:</b> 503 aa, 57 kDa	
	<b>Observed MW:</b> 51-57 kDa	

## Applications

<b>Tested Applications:</b> WB, IHC, IF/ICC, IF-P, ELISA	<b>Positive Controls:</b>
<b>Cited Applications:</b> WB, IF	<b>WB :</b> mouse liver tissue, pig liver tissue, pig gall bladder tissue, mouse lung tissue, rat liver tissue
<b>Species Specificity:</b> human, mouse, rat, pig	<b>IHC :</b> mouse liver tissue, human liver cancer tissue
<b>Cited Species:</b> human, mouse	<b>IF-P :</b> mouse liver tissue, rat liver tissue
	<b>IF/ICC :</b> HepG2 cells,

**Note-IHC: suggested antigen retrieval with *TE buffer pH 9.0*; (\*) Alternatively, antigen retrieval may be performed with *citrate buffer pH 6.0***

## Notable Publications

Author	Pubmed ID	Journal	Application
Rong Li	35507159	Methods Mol Biol	IF
Rong Li	35371477	Biomed Rep	IF
Lei Sun	39954312	Biomaterials	WB

## Storage

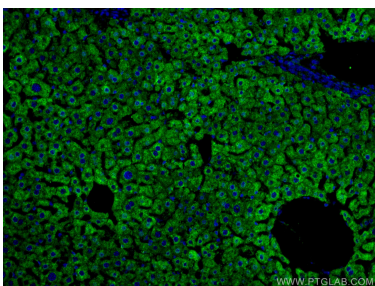
**Storage:**  
Store at -20°C. Stable for one year after shipment.  
**Storage Buffer:**  
PBS with 0.02% sodium azide and 50% glycerol, pH7.3  
**Aliquoting is unnecessary for -20°C storage**

**\*\*\* 20ul sizes contain 0.1% BSA**

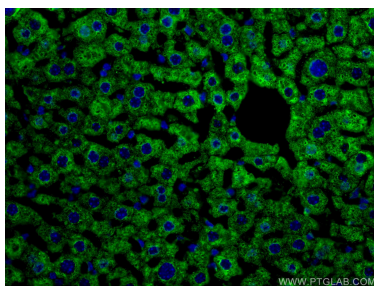
For technical support and original validation data for this product please contact:  
T: 1 (888) 4PTGLAB (1-888-478-4522) (toll free in USA), or 1(312) 455-8498 (outside USA)  
E: proteintech@ptglab.com  
W: ptglab.com

This product is exclusively available under Proteintech Group brand and is not available to purchase from any other manufacturer.

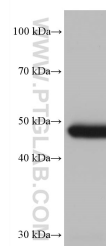
## Selected Validation Data



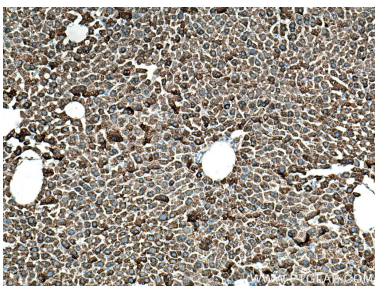
Immunofluorescent analysis of (4% PFA) fixed mouse liver tissue using CYP3A4 antibody (67110-1-Ig, Clone: 2F11C4) at dilution of 1:400 and CoraLite®488-Conjugated AffiniPure Goat Anti-Mouse IgG(H+L).



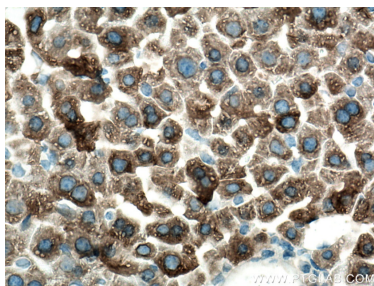
Immunofluorescent analysis of (4% PFA) fixed mouse liver tissue using CYP3A4 antibody (67110-1-Ig, Clone: 2F11C4) at dilution of 1:400 and CoraLite®488-Conjugated AffiniPure Goat Anti-Mouse IgG(H+L).



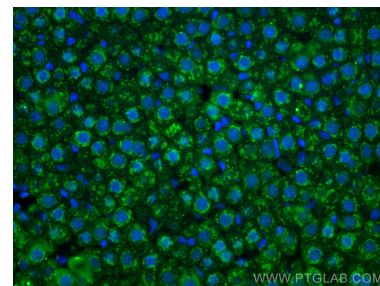
mouse liver tissue were subjected to SDS PAGE followed by western blot with 67110-1-Ig (CYP3A4 antibody) at dilution of 1:20000 incubated at room temperature for 1.5 hours.



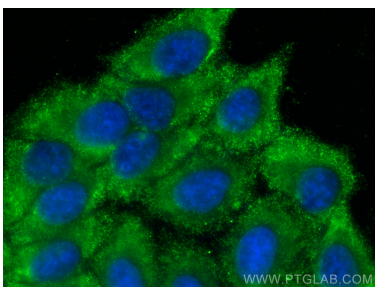
Immunohistochemical analysis of paraffin-embedded mouse liver tissue slide using 67110-1-Ig (CYP3A4 antibody) at dilution of 1:600 (under 10x lens). Heat mediated antigen retrieval with Tris-EDTA buffer (pH 9.0).



Immunohistochemical analysis of paraffin-embedded mouse liver tissue slide using 67110-1-Ig (CYP3A4 antibody) at dilution of 1:600 (under 40x lens). Heat mediated antigen retrieval with Tris-EDTA buffer (pH 9.0).



Immunofluorescent analysis of (4% PFA) fixed rat liver tissue using CYP3A4 antibody (67110-1-Ig, Clone: 2F11C4) at dilution of 1:1000 and CoraLite®488-Conjugated AffiniPure Goat Anti-Mouse IgG(H+L).



Immunofluorescent analysis of (-20°C Ethanol) fixed HepG2 cells using CYP3A4 antibody (67110-1-Ig, Clone: 2F11C4) at dilution of 1:800 and CoraLite®488-Conjugated Goat Anti-Mouse IgG(H+L) (SA00013-1).