

For Research Use Only

# LOXL2 Monoclonal ANTIBODY



Catalog Number: 67139-1-Ig

## Basic Information

<b>Catalog Number:</b> 67139-1-Ig	<b>GenBank Accession Number:</b> BC000594	<b>Purification Method:</b> Protein A purification
<b>Size:</b> 150UL, Concentration: 1000 µg/ml by Bradford method using BSA as the standard;	<b>GeneID (NCBI):</b> 4017	<b>CloneNo.:</b> 1H7F1
<b>Source:</b> Mouse	<b>Full Name:</b> lysyl oxidase-like 2	<b>Recommended Dilutions:</b> WB 1:1000-1:4000 IF 1:50-1:500
<b>Isotype:</b> IgG2a	<b>Calculated MW:</b> 774 aa, 87 kDa	
<b>Immunogen Catalog Number:</b> AG28566	<b>Observed MW:</b> 100 kDa	

## Applications

<b>Tested Applications:</b> IF, WB, ELISA	<b>Positive Controls:</b>
<b>Species Specificity:</b> Human	<b>WB:</b> A549 cells, human placenta tissue, A375 cells, human heart tissue <b>IF:</b> HepG2 cells,

## Background Information

LOXL2, also named as WS9-14, belongs to an amine oxidase family whose members have been implicated in crosslink formation in stromal collagens and elastin, cell motility, and tumor development and progression. LOXL2 activity might be a crucial modulator of Snail, providing an additional control mechanism of EMT and tumor progression. Increased LOXL2 expression in colon and esophageal cancer may contribute to tumor progression. We detected a band about 100 kd which is a secretory mature LOXL2 protein modified by glycosylation (PMID: 24014025).

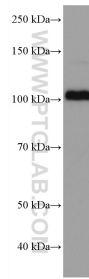
## Storage

**Storage:**  
Store at -20°C.  
**Storage Buffer:**  
PBS with 0.1% sodium azide and 50% glycerol pH 7.3.  
Aliquoting is unnecessary for -20°C storage

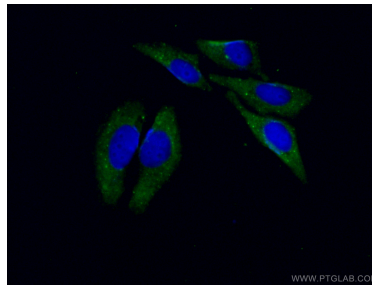
For technical support and original validation data for this product please contact:  
T: 1 (888) 4PTGLAB (1-888-478-4522) (toll free in USA), or 1(312) 455-8498 (outside USA)  
E: proteintech@ptglab.com  
W: ptglab.com

This product is exclusively available under Proteintech Group brand and is not available to purchase from any other manufacturer.

## Selected Validation Data



A549 cells were subjected to SDS PAGE followed by western blot with 67139-1-Ig (LOXL2 antibody) at dilution of 1:2000 incubated at room temperature for 1.5 hours.



Immunofluorescent analysis of (-20°C Ethanol) fixed HepG2 cells using 67139-1-Ig (LOXL2 antibody) at dilution of 1:100 and CoraLite488-Conjugated AffiniPure Goat Anti-Mouse IgG(H+L).