

For Research Use Only

CDC25B Monoclonal antibody

Catalog Number: 67145-1-Ig



Basic Information

Catalog Number: 67145-1-Ig	GenBank Accession Number: BC006395	Purification Method: Protein A purification
Size: 150ul , Concentration: 1000 µg/ml by Bradford method using BSA as the standard;	GeneID (NCBI): 994	CloneNo.: 1H3A4
Source: Mouse	Full Name: cell division cycle 25 homolog B (S. pombe)	Recommended Dilutions: WB 1:5000-1:50000
Isotype: IgG2b	Calculated MW: 65 kDa	
Immunogen Catalog Number: AG27193	Observed MW: 69 kDa	

Applications

Tested Applications: WB,ELISA	Positive Controls: WB : Sp2/O cells, Jurkat cells, U-937 cells
Species Specificity: Human, Mouse, rat	

Background Information

CDC25B, also named as CDC25HU2, belongs to the MPI phosphatase family. It is a tyrosine protein phosphatase which functions as a dosage-dependent inducer of mitotic progression. CDC25B directly dephosphorylates CDK1 and stimulates its kinase activity. The three isoforms seem to have a different level of activity.

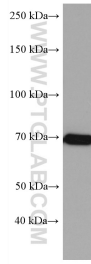
Storage

Storage:
Store at -20°C.
Storage Buffer:
PBS with 0.02% sodium azide and 50% glycerol pH 7.3.
Aliquoting is unnecessary for -20°C storage

For technical support and original validation data for this product please contact:
T: 1 (888) 4PTGLAB (1-888-478-4522) (toll free in USA), or 1(312) 455-8498 (outside USA) E: proteintech@ptglab.com
W: ptglab.com

This product is exclusively available under Proteintech Group brand and is not available to purchase from any other manufacturer.

Selected Validation Data



Sp2/0 cells were subjected to SDS PAGE followed by western blot with 67145-1-Ig (CDC25B antibody) at dilution of 1:10000 incubated at room temperature for 1.5 hours.