

For Research Use Only

# ACLY Monoclonal antibody

Catalog Number: 67166-1-Ig **1 Publications**



## Basic Information

<b>Catalog Number:</b> 67166-1-Ig	<b>GenBank Accession Number:</b> BC006195	<b>Purification Method:</b> Protein A purification
<b>Size:</b> 150ul , Concentration: 1000 µg/ml by Bradford method using BSA as the standard;	<b>GeneID (NCBI):</b> 47	<b>CloneNo.:</b> 1E10D5
<b>Source:</b> Mouse	<b>Full Name:</b> ATP citrate lyase	<b>Recommended Dilutions:</b> WB 1:1000-1:10000 IHC 1:500-1:3000 IF 1:50-1:500
<b>Isotype:</b> IgM	<b>Calculated MW:</b> 121 kDa	
<b>Immunogen Catalog Number:</b> AG7709	<b>Observed MW:</b> 120 kDa	

## Applications

<b>Tested Applications:</b> IF, IHC, WB, ELISA	<b>Positive Controls:</b> WB : Jurkat cells, MCF-7 cells, HSC-T6 cells IHC : human prostate cancer tissue, IF : A549 cells,
<b>Cited Applications:</b> WB	
<b>Species Specificity:</b> Human, Mouse, Rat	
<b>Cited Species:</b> human	
<b>Note-IHC: suggested antigen retrieval with TE buffer pH 9.0; (*) Alternatively, antigen retrieval may be performed with citrate buffer pH 6.0</b>	

## Background Information

ACLY(ATP-citrate synthase) is also named as ACL. It is the primary enzyme responsible for the synthesis of cytosolic acetyl-CoA. ACLY serves as not only a target in oxygenated cells for suppression of lipid synthesis and histone acetylation, but also as a susceptible target in hypoxic cells to restore inhibition of glycolysis. In nonsmall cell lung carcinoma and hepatocellular carcinoma, ACLY is overexpressed compared with normal parenchyma suggesting that ACLY may represent a common target among highly malignant tumors(PMID:19795461). This protein has 2 isoforms produced by alternative splicing.

## Notable Publications

Author	Pubmed ID	Journal	Application
Yu Hu	34539243	Mediators Inflamm	WB

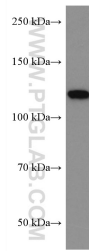
## Storage

**Storage:**  
Store at -20°C.  
**Storage Buffer:**  
PBS with 0.02% sodium azide and 50% glycerol pH 7.3.  
Aliquoting is unnecessary for -20°C storage

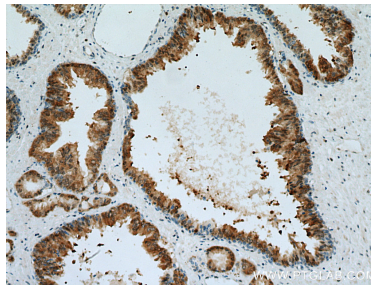
For technical support and original validation data for this product please contact:  
T: 1 (888) 4PTGLAB (1-888-478-4522) (toll free in USA), or 1(312) 455-8498 (outside USA)  
E: proteintech@ptglab.com  
W: ptglab.com

**This product is exclusively available under Proteintech Group brand and is not available to purchase from any other manufacturer.**

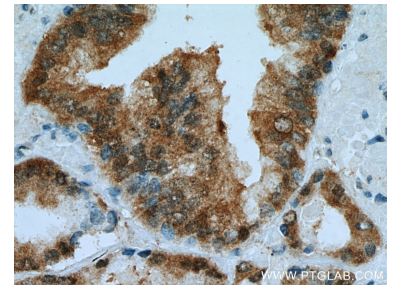
## Selected Validation Data



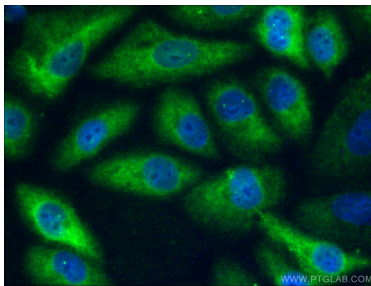
Jurkat cells were subjected to SDS PAGE followed by western blot with 67166-1-Ig (ACLY antibody) at dilution of 1:10000 incubated at room temperature for 1.5 hours.



Immunohistochemical analysis of paraffin-embedded human prostate cancer tissue slide using 67166-1-Ig (ACLY antibody) at dilution of 1:2000 (under 10x lens). Heat mediated antigen retrieval with Tris-EDTA buffer (pH 9.0).



Immunohistochemical analysis of paraffin-embedded human prostate cancer tissue slide using 67166-1-Ig (ACLY antibody) at dilution of 1:2000 (under 40x lens). Heat mediated antigen retrieval with Tris-EDTA buffer (pH 9.0).



Immunofluorescent analysis of (-20°C Ethanol) fixed A549 cells using 67166-1-Ig (ACLY antibody) at dilution of 1:100 and CoraLite488-Conjugated AffiniPure Goat Anti-Mouse IgG(H+L).