

For Research Use Only

GNL3 Monoclonal antibody

Catalog Number: 67169-1-Ig **2 Publications**



Basic Information

Catalog Number: 67169-1-Ig	GenBank Accession Number: BC001024	Purification Method: Protein A purification
Size: 150ul , Concentration: 1900 ug/ml by Nanodrop and 1000 ug/ml by Bradford method using BSA as the standard;	GeneID (NCBI): 26354	CloneNo.: 3B8F10
Source: Mouse	UNIPROT ID: Q9BVP2	Recommended Dilutions: WB 1:5000-1:20000 IF/ICC 1:50-1:500
Isotype: IgG2a	Full Name: guanine nucleotide binding protein-like 3 (nucleolar)	
Immunogen Catalog Number: AG7056	Calculated MW: 62 kDa	
	Observed MW: 62 kDa	

Applications

Tested Applications: WB, IF/ICC, ELISA	Positive Controls:
Cited Applications: WB, IF	WB : HeLa cells, HEK-293 cells, MCF-7 cells, Jurkat cells, HSC-T6 cells, NIH/3T3 cells, 4T1 cells
Species Specificity: Human, mouse, rat	IF/ICC : HeLa cells,
Cited Species: human, mouse	

Notable Publications

Author	Pubmed ID	Journal	Application
Zijian Zhang	40048539	Science	WB
Lixuan Wang	38886346	Int J Oral Sci	WB,IF

Storage

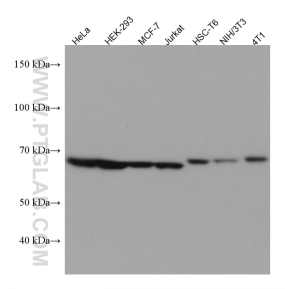
Storage:
Store at -20°C. Stable for one year after shipment.
Storage Buffer:
PBS with 0.02% sodium azide and 50% glycerol, pH7.3
Aliquoting is unnecessary for -20°C storage

***** 20ul sizes contain 0.1% BSA**

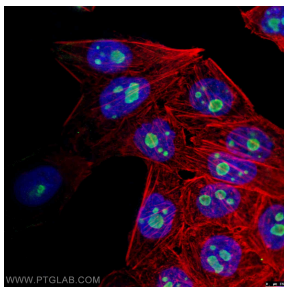
For technical support and original validation data for this product please contact:
T: 1 (888) 4PTGLAB (1-888-478-4522) (toll free in USA), or 1(312) 455-8498 (outside USA)
E: proteintech@ptglab.com
W: ptglab.com

This product is exclusively available under Proteintech Group brand and is not available to purchase from any other manufacturer.

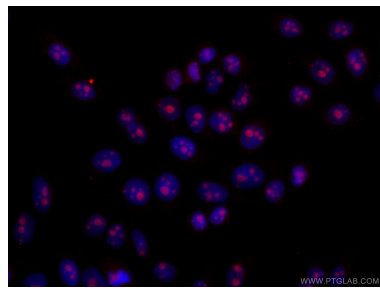
Selected Validation Data



Various lysates were subjected to SDS PAGE followed by western blot with 67169-1-Ig (GNL3 antibody) at dilution of 1:10000 incubated at room temperature for 1.5 hours.



Immunofluorescent analysis of 4% PFA fixed HeLa cells using 67169-1-Ig (GNL3 mouse antibody, green) at dilution of 1:200 and CoraLite488-conjugated Goat Anti-Mouse IgG(H+L). F-actin is stained using CL555-phalloidin (red) and DNA is stained by DAPI (blue).



Immunofluorescent analysis of (4% PFA) fixed HeLa cells using 67169-1-Ig (GNL3 antibody) at dilution of 1:100 and CoraLite594-Conjugated Goat Anti-Mouse IgG(H+L).