

For Research Use Only

# ENO1 Monoclonal antibody

Catalog Number: 67187-1-Ig

Featured Product

1 Publications



## Basic Information

Catalog Number:

67187-1-Ig

Size:

150ul, Concentration: 200 ug/ml by Bradford method using BSA as the standard;

Source:

Mouse

Isotype:

IgM

Immunogen Catalog Number:

AG17518

GenBank Accession Number:

BC015641

GeneID (NCBI):

2023

ENSEMBL Gene ID:

ENSG00000074800

UNIPROT ID:

P06733

Full Name:

enolase 1, (alpha)

Calculated MW:

47 kDa

Observed MW:

47 kDa

Purification Method:

Thiophilic affinity chromatograph

CloneNo.:

1D6E8

Recommended Dilutions:

WB: 1:5000-1:50000

IF/ICC: 1:400-1:1600

## Applications

Tested Applications:

WB, IF/ICC, ELISA

Cited Applications:

WB

Species Specificity:

human, mouse, rat, pig

Cited Species:

human

Positive Controls:

WB: HEK-293 cells, HeLa cells, PC-3 cells, Jurkat cells, pig brain tissue, rat brain tissue, mouse brain tissue

IF/ICC: HeLa cells, HepG2 cells

## Background Information

ENO1, also named as NNE, ENO1L1, MBPB1, MPB1 and MBP1, belongs to the enolase family. ENO1 is a metabolic enzyme involved in the synthesis of pyruvate. It also acts as a plasminogen receptor and mediates the activation of plasmin and extracellular matrix degradation. In tumor cells, ENO1 is up-regulated and supports the Warburg effect; it is expressed at the cell surface, where it promotes cancer invasion, and is subjected to a specific array of post-translational modifications, namely acetylation, methylation and phosphorylation. ENO1 overexpression and post-translational modifications could be of diagnostic and prognostic value in many cancer types. (PMID: 27814656)

## Notable Publications

Author	Pubmed ID	Journal	Application
Li Chen	39808866	Tissue Cell	WB

## Storage

Storage:

Store at -20°C. Stable for one year after shipment.

Storage Buffer:

PBS with 0.02% sodium azide and 50% glycerol, pH7.3

Aliquoting is unnecessary for -20°C storage

\*\*\* 20ul sizes contain 0.1% BSA

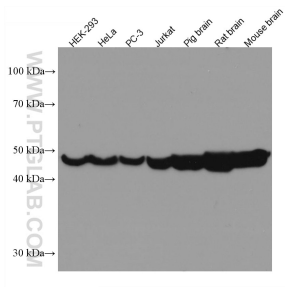
For technical support and original validation data for this product please contact:

T: 1 (888) 4PTGLAB (1-888-478-4522) (toll free in USA), or 1(312) 455-8498 (outside USA)

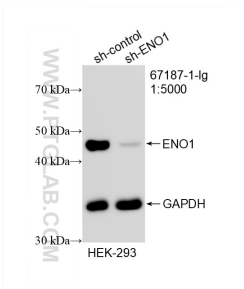
E: [proteintech@ptglab.com](mailto:proteintech@ptglab.com)  
W: [ptglab.com](http://ptglab.com)

This product is exclusively available under Proteintech Group brand and is not available to purchase from any other manufacturer.

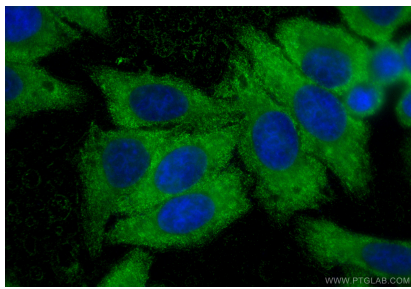
Selected Validation Data



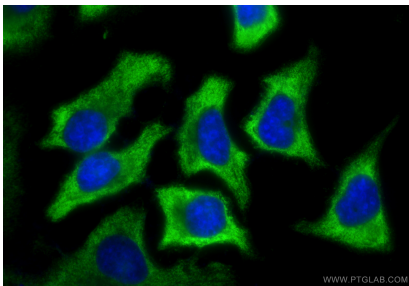
Various lysates were subjected to SDS PAGE followed by western blot with 67187-1-Ig (ENO1 antibody) at dilution of 1:10000 incubated at room temperature for 1.5 hours.



WB result of ENO1 antibody (67187-1-Ig; 1:5000; incubated at room temperature for 1.5 hours) with sh-Control and sh-ENO1 transfected HEK-293 cells.



Immunofluorescent analysis of (-20°C Ethanol) fixed HepG2 cells using ENO1 antibody (67187-1-Ig, Clone: 1D6E8 ) at dilution of 1:800 and CoraLite®488-Conjugated Goat Anti-Mouse IgG(H+L) (SA00013-1).



Immunofluorescent analysis of (-20°C Ethanol) fixed HeLa cells using ENO1 antibody (67187-1-Ig, Clone: 1D6E8 ) at dilution of 1:800 and CoraLite®488-Conjugated Goat Anti-Mouse IgG(H+L) (SA00013-1).