

For Research Use Only

BCR Monoclonal antibody

Catalog Number: 67260-1-Ig



Basic Information

Catalog Number:

67260-1-Ig

GenBank Accession Number:

BC066122

Purification Method:

Protein A purification

Size:

150ul, Concentration: 1600 ug/ml by 613

GeneID (NCBI):

613

CloneNo.:

2C2E3

Nanodrop and 1000 ug/ml by Bradford method using BSA as the standard;

UNIPROT ID:

P11274

Recommended Dilutions:

WB: 1:2000-1:10000

Source:

Mouse

Full Name:

breakpoint cluster region

FC (Intra): 0.40 ug per 10⁶ cells in a 100 µl suspension

Isotype:

IgG2b

Calculated MW:

143 kDa

FC: 0.40 ug per 10⁶ cells in a 100 µl suspension

Immunogen Catalog Number:

AG28953

Observed MW:

150-160 kDa

Applications

Tested Applications:

WB, ELISA, FC (Intra)

Positive Controls:

WB : Jurkat cells, HEK-293 cells, HeLa cells

Species Specificity:

Human, rat

FC (Intra) : K-562 cells,

FC : K-562 cells,

Background Information

The Bcr gene, mapping on chromosome22, was originally identified by its presence in the chimeric Bcr-Abl oncogene. The Bcr gene encodes for the break point cluster region protein(Bcr). Although the BCR-ABL fusion protein has been extensively studied, the function of the normal BCR gene product is not clear. The protein has serine/threonine kinase activity and is a GTPase-activating protein for RAC1 and CDC42. A chromosomal aberration involving BCR has been found in patients with chronic myeloid leukemia.

Storage

Storage:

Store at -20°C. Stable for one year after shipment.

Storage Buffer:

PBS with 0.02% sodium azide and 50% glycerol, pH7.3

Aliquoting is unnecessary for -20°C storage

*** 20ul sizes contain 0.1% BSA

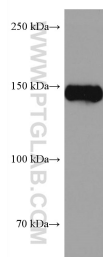
For technical support and original validation data for this product please contact:

T: 1 (888) 4PTGLAB (1-888-478-4522) (toll free in USA), or 1(312) 455-8498 (outside USA)

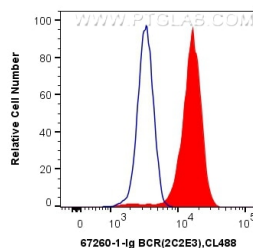
E: proteintech@ptglab.com
W: ptglab.com

This product is exclusively available under Proteintech Group brand and is not available to purchase from any other manufacturer.

Selected Validation Data



Jurkat cells were subjected to SDS PAGE followed by western blot with 67260-1-Ig (BCR antibody) at dilution of 1:5000 incubated at room temperature for 1.5 hours.



1X10⁶ K-562 cells were intracellularly stained with 0.4 ug Anti-Human BCR (67260-1-Ig, Clone:2C2E3) and CoraLite®488-Conjugated Goat Anti-Mouse IgG(H+L) at dilution 1:1000 (red), or 0.4 ug Mouse IgG2b Isotype Control (66360-3-Ig, Clone: K11B8C4B5) (blue). Cells were fixed with 4% PFA and permeabilized with Flow Cytometry Perm Buffer (PF00011-C).