

For Research Use Only

Biglycan Monoclonal antibody

Catalog Number: 67275-1-Ig **2 Publications**



Basic Information

Catalog Number:

67275-1-Ig

GenBank Accession Number:

BC004244

Purification Method:

Protein A purification

Size:

150ul, Concentration: 1900 ug/ml by 633
Nanodrop and 1000 ug/ml by Bradford
method using BSA as the standard;

GeneID (NCBI):

633

CloneNo.:

1E3F2

UNIPROT ID:

P21810

Recommended Dilutions:

WB: 1:2000-1:10000

IHC: 1:2000-1:8000

FC (Intra): 0.40 ug per 10⁶ cells in a
100 µl suspension

Source:

Mouse

Full Name:

biglycan

Isotype:

IgG2a

Calculated MW:

42 kDa

Immunogen Catalog Number:

AG8012

Observed MW:

48 kDa

Applications

Tested Applications:

WB, IHC, FC (Intra), ELISA

Cited Applications:

WB, IHC

Species Specificity:

human, mouse, pig

Cited Species:

human

**Note-IHC: suggested antigen retrieval with
TE buffer pH 9.0; (*) Alternatively, antigen
retrieval may be performed with citrate
buffer pH 6.0**

Positive Controls:

WB : pig skin tissue, HepG2 cells, pig colon tissue,
mouse testis tissue

IHC : human kidney tissue, human placenta tissue,
human lung tissue, human lung cancer tissue, human
colon cancer tissue, human stomach cancer tissue,
human liver tissue

FC (Intra) : HepG2 cells,

Background Information

Biglycan is a member of the small leucine-rich proteoglycan (SLRP) family (PMID: 18463092). It consists of a core protein of 42 kDa containing leucine-rich repeats (LRRs), to which two chondroitin/dermatan sulfate side chains are covalently bound (PMID: 2212616; 10383378). The tissue-specific chondroitin- or dermatan-sulfate glycosaminoglycan chains of biglycan are attached to amino acid residues at the N-terminus of the core protein (PMID: 22821552). Biglycan is a ubiquitous component of connective tissue matrix and may act as a signaling molecule (PMID: 22821552). Upregulation of biglycan has been reported in multiple types of solid cancer (PMID: 32194659).

Notable Publications

Author	Pubmed ID	Journal	Application
Wenhong Lu	38740818	Sci Rep	IHC
Yuyu Xu	37664615	iScience	WB

Storage

Storage:

Store at -20°C. Stable for one year after shipment.

Storage Buffer:

PBS with 0.02% sodium azide and 50% glycerol, pH7.3

Aliquoting is unnecessary for -20°C storage

*** 20ul sizes contain 0.1% BSA

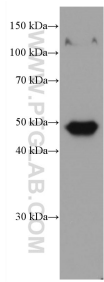
For technical support and original validation data for this product please contact:

T: 1 (888) 4PTGLAB (1-888-478-4522) (toll free
in USA), or 1(312) 455-8498 (outside USA)

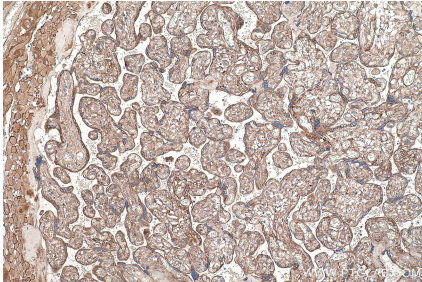
E: proteintech@ptglab.com
W: ptglab.com

This product is exclusively available under Proteintech
Group brand and is not available to purchase from any
other manufacturer.

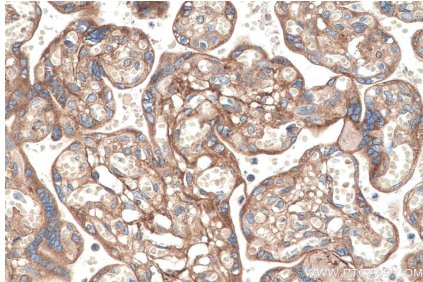
Selected Validation Data



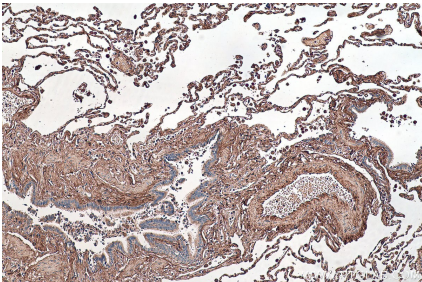
pig skin tissue were subjected to SDS PAGE followed by western blot with 67275-1-Ig (Biglycan antibody) at dilution of 1:5000 incubated at room temperature for 1.5 hours.



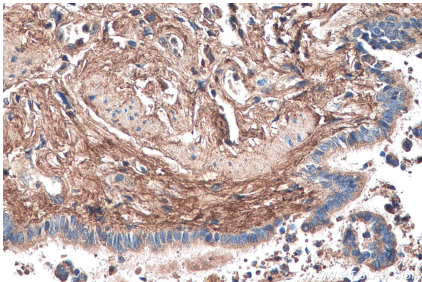
Immunohistochemical analysis of paraffin-embedded human placenta tissue slide using 67275-1-Ig (Biglycan antibody) at dilution of 1:4000 (under 10x lens). Heat mediated antigen retrieval with Tris-EDTA buffer (pH 9.0).



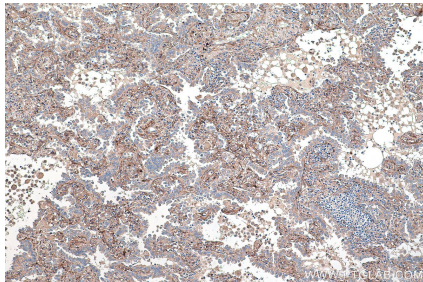
Immunohistochemical analysis of paraffin-embedded human placenta tissue slide using 67275-1-Ig (Biglycan antibody) at dilution of 1:4000 (under 40x lens). Heat mediated antigen retrieval with Tris-EDTA buffer (pH 9.0).



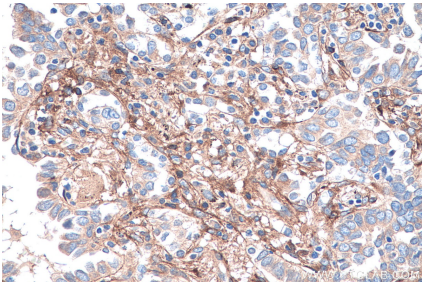
Immunohistochemical analysis of paraffin-embedded human lung tissue slide using 67275-1-Ig (Biglycan antibody) at dilution of 1:4000 (under 10x lens). Heat mediated antigen retrieval with Tris-EDTA buffer (pH 9.0).



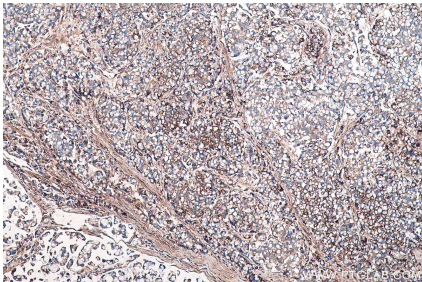
Immunohistochemical analysis of paraffin-embedded human lung tissue slide using 67275-1-Ig (Biglycan antibody) at dilution of 1:4000 (under 40x lens). Heat mediated antigen retrieval with Tris-EDTA buffer (pH 9.0).



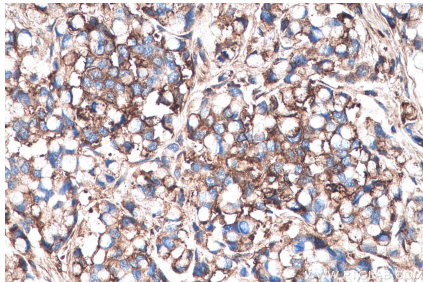
Immunohistochemical analysis of paraffin-embedded human lung cancer tissue slide using 67275-1-Ig (Biglycan antibody) at dilution of 1:4000 (under 10x lens). Heat mediated antigen retrieval with Tris-EDTA buffer (pH 9.0).



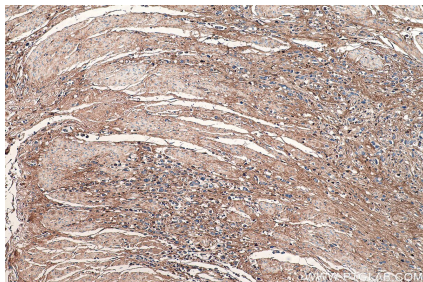
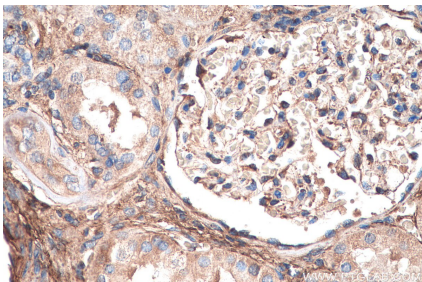
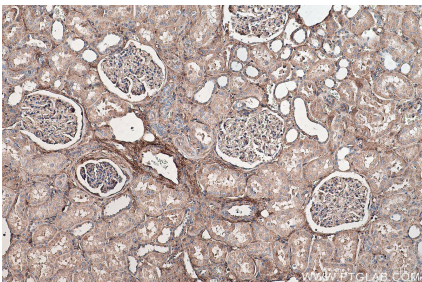
Immunohistochemical analysis of paraffin-embedded human lung cancer tissue slide using 67275-1-Ig (Biglycan antibody) at dilution of 1:4000 (under 40x lens). Heat mediated antigen retrieval with Tris-EDTA buffer (pH 9.0).



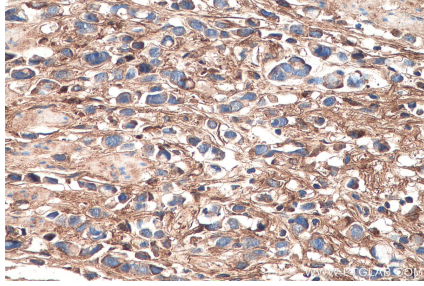
Immunohistochemical analysis of paraffin-embedded human colon cancer tissue slide using 67275-1-Ig (Biglycan antibody) at dilution of 1:4000 (under 10x lens). Heat mediated antigen retrieval with Tris-EDTA buffer (pH 9.0).



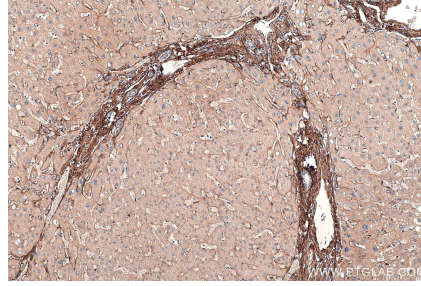
Immunohistochemical analysis of paraffin-embedded human colon cancer tissue slide using 67275-1-Ig (Biglycan antibody) at dilution of 1:4000 (under 40x lens). Heat mediated antigen retrieval with Tris-EDTA buffer (pH 9.0).



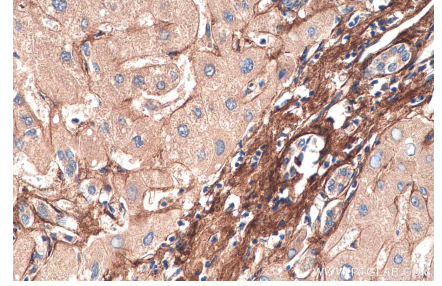
Immunohistochemical analysis of paraffin-embedded human kidney tissue slide using 67275-1-Ig (Biglycan antibody) at dilution of 1:4000 (under 10x lens). Heat mediated antigen retrieval with Tris-EDTA buffer (pH 9.0).



Immunohistochemical analysis of paraffin-embedded human kidney tissue slide using 67275-1-Ig (Biglycan antibody) at dilution of 1:4000 (under 40x lens). Heat mediated antigen retrieval with Tris-EDTA buffer (pH 9.0).



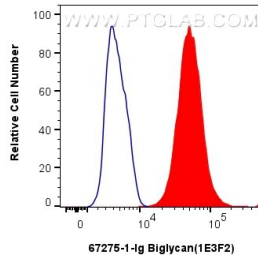
Immunohistochemical analysis of paraffin-embedded human stomach cancer tissue slide using 67275-1-Ig (Biglycan antibody) at dilution of 1:4000 (under 10x lens). Heat mediated antigen retrieval with Tris-EDTA buffer (pH 9.0).



Immunohistochemical analysis of paraffin-embedded human stomach cancer tissue slide using 67275-1-Ig (Biglycan antibody) at dilution of 1:4000 (under 40x lens). Heat mediated antigen retrieval with Tris-EDTA buffer (pH 9.0).

Immunohistochemical analysis of paraffin-embedded human liver tissue slide using 67275-1-Ig (Biglycan antibody) at dilution of 1:4000 (under 10x lens). Heat mediated antigen retrieval with Tris-EDTA buffer (pH 9.0).

Immunohistochemical analysis of paraffin-embedded human liver tissue slide using 67275-1-Ig (Biglycan antibody) at dilution of 1:4000 (under 40x lens). Heat mediated antigen retrieval with Tris-EDTA buffer (pH 9.0).



1x10⁶ HepG2 cells were intracellularly stained with 0.4 ug Biglycan Monoclonal antibody (67275-1-Ig, Clone:1E3F2) and Coralite®488-Conjugated Goat Anti-Mouse IgG(H+L) (SA00013-1)(red), or 0.4 ug Mouse IgG2a isotype control Mouse McAb (66360-2-Ig, Clone: 11A1B2) (blue). Cells were fixed with 4% PFA and permeabilized with Flow Cytometry Perm Buffer (PF00011-C).