

For Research Use Only

# UBC12 Monoclonal antibody

Catalog Number: 67482-1-Ig

Featured Product

1 Publications



## Basic Information

Catalog Number:

67482-1-Ig

Size:

150ul, Concentration: 1900 ug/ml by Nanodrop and 1000 ug/ml by Bradford method using BSA as the standard;

Source:

Mouse

Isotype:

IgG1

Immunogen Catalog Number:

AG5984

GenBank Accession Number:

BC058924

GeneID (NCBI):

9040

UNIPROT ID:

P61081

Full Name:

ubiquitin-conjugating enzyme E2M (UBC12 homolog, yeast)

Calculated MW:

21 kDa

Observed MW:

21 kDa

Purification Method:

Protein G purification

CloneNo.:

1H8D2

Recommended Dilutions:

WB 1:2000-1:10000

IHC 1:500-1:2000

IF/ICC 1:200-1:800

## Applications

Tested Applications:

WB, IHC, IF/ICC, ELISA

Cited Applications:

WB

Species Specificity:

human, mouse, rat

Cited Species:

human, mouse

**Note-IHC: suggested antigen retrieval with TE buffer pH 9.0; (\*) Alternatively, antigen retrieval may be performed with citrate buffer pH 6.0**

Positive Controls:

WB: Jurkat cells, HEK-293 cells, HeLa cells, HepG2 cells, L02 cells, HSC-T6 cells, NIH/3T3 cells

IHC: human liver cancer tissue,

IF/ICC: HeLa cells,

## Notable Publications

Author	Pubmed ID	Journal	Application
Xianghui Kong	36662617	Cell Rep	WB

## Storage

Storage:

Store at -20°C. Stable for one year after shipment.

Storage Buffer:

PBS with 0.02% sodium azide and 50% glycerol, pH7.3

Aliquoting is unnecessary for -20°C storage

\*\*\* 20ul sizes contain 0.1% BSA

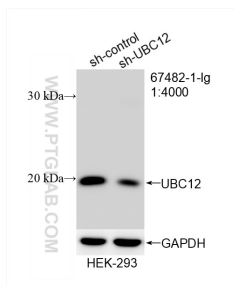
For technical support and original validation data for this product please contact:

T: 1 (888) 4PTGLAB (1-888-478-4522) (toll free in USA), or 1(312) 455-8498 (outside USA)

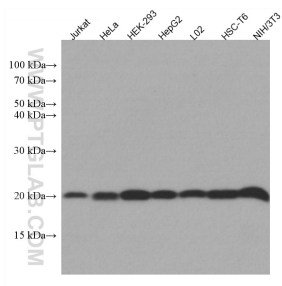
E: [proteintech@ptglab.com](mailto:proteintech@ptglab.com)  
W: [ptglab.com](http://ptglab.com)

This product is exclusively available under Proteintech Group brand and is not available to purchase from any other manufacturer.

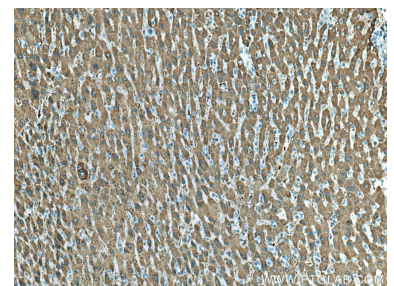
## Selected Validation Data



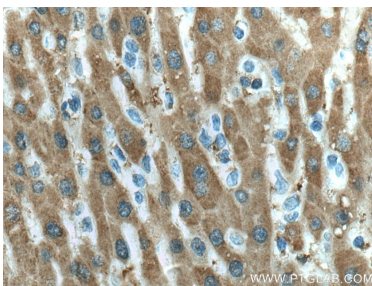
WB result of UBC12 antibody (67482-1-Ig; 1:4000; incubated at room temperature for 1.5 hours) with sh-Control and sh-UBC12 transfected HEK-293 cells.



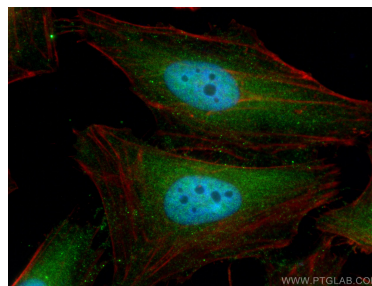
Various lysates were subjected to SDS PAGE followed by western blot with 67482-1-Ig (UBC12 antibody) at dilution of 1:5000 incubated at room temperature for 1.5 hours.



Immunohistochemical analysis of paraffin-embedded human liver cancer tissue slide using 67482-1-Ig (UBC12 antibody) at dilution of 1:1000 (under 10x lens). Heat mediated antigen retrieval with Tris-EDTA buffer (pH 9.0).



Immunohistochemical analysis of paraffin-embedded human liver cancer tissue slide using 67482-1-Ig (UBC12 antibody) at dilution of 1:1000 (under 40x lens). Heat mediated antigen retrieval with Tris-EDTA buffer (pH 9.0).



Immunofluorescent analysis of (4% PFA) fixed HeLa cells using UBC12 antibody (67482-1-Ig, Clone: 1H8D2) at dilution of 1:400 and CoraLite® 488-Conjugated AffiniPure Goat Anti-Mouse IgG(H+L), CL594-Phalloidin (red).