

For Research Use Only

EEF1A1 Monoclonal antibody

Catalog Number: 67495-1-Ig **3 Publications**



Basic Information

Catalog Number: 67495-1-Ig	GenBank Accession Number: BC014224	Purification Method: Protein G purification
Size: 150ul, Concentration: 1000 ug/ml by Nanodrop and 476 ug/ml by Bradford method using BSA as the standard;	GeneID (NCBI): 1915	CloneNo.: 1A9F5
Source: Mouse	UNIPROT ID: P68104	Recommended Dilutions: WB: 1:5000-1:50000 IHC: 1:150-1:600 IF/ICC: 1:50-1:500 FC (Intra): 0.40 ug per 10 ⁶ cells in a 100 µl suspension
Isotype: IgG1	Full Name: eukaryotic translation elongation factor 1 alpha 1	
Immunogen Catalog Number: AG1938	Calculated MW: 462 aa, 50 kDa	
	Observed MW: 49 kDa	

Applications

Tested Applications: WB, IHC, IF/ICC, FC (Intra), ELISA	Positive Controls: WB : HeLa cells, HepG2 cells, HEK-293 cells, Jurkat cells, K-562 cells, HSC-T6 cells, PC-12 cells, NIH/3T3 cells, 4T1 cells IHC : human pancreas cancer tissue, mouse brain tissue IF/ICC : HepG2 cells, FC (Intra) : HepG2 cells,
Cited Applications: WB, IF, IP	
Species Specificity: human, mouse, rat	
Cited Species: human	
Note-IHC: suggested antigen retrieval with TE buffer pH 9.0; (*) Alternatively, antigen retrieval may be performed with citrate buffer pH 6.0	

Background Information

EEF1A1, also named as EEF1A, EF1A and LENG7, belongs to the GTP-binding elongation factor family. This protein promotes the GTP-dependent binding of aminoacyl-tRNA to the A-site of ribosomes during protein biosynthesis. It is a typical housekeeping gene product required for the maintenance of cell proliferation and/or survival. In addition, EEF1A1 protects the aminoester bond against hydrolysis until a correct match between the codon on mRNA and the anti-codon on tRNA can be achieved.

Notable Publications

Author	Pubmed ID	Journal	Application
Yingjie Hou	35036957	STAR Protoc	WB, IP
Yingjie Hou	34478637	Cell Chem Biol	WB
Jie Zhao	38965582	Biol Direct	IF

Storage

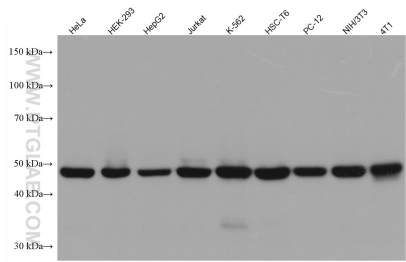
Storage:
Store at -20°C. Stable for one year after shipment.
Storage Buffer:
PBS with 0.02% sodium azide and 50% glycerol, pH7.3
Aliquoting is unnecessary for -20°C storage

*** 20ul sizes contain 0.1% BSA

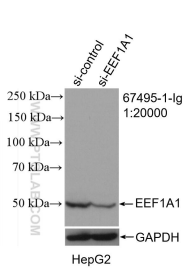
For technical support and original validation data for this product please contact:
T: 1 (888) 4PTGLAB (1-888-478-4522) (toll free in USA), or 1(312) 455-8498 (outside USA)
E: proteintech@ptglab.com
W: ptglab.com

This product is exclusively available under Proteintech Group brand and is not available to purchase from any other manufacturer.

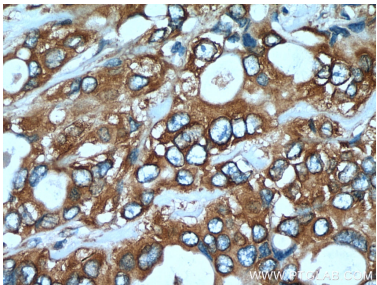
Selected Validation Data



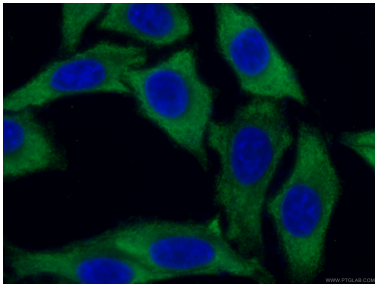
Various lysates were subjected to SDS PAGE followed by western blot with 67495-1-Ig (EEF1A1 antibody) at dilution of 1:10000 incubated at room temperature for 1.5 hours.



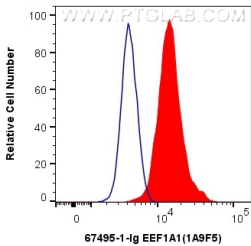
WB result of EEF1A1 antibody (67495-1-Ig; 1:20000; incubated at room temperature for 1.5 hours) with sh-Control and sh-EEF1A1 transfected HepG2 cells.



Immunohistochemical analysis of paraffin-embedded human pancreas cancer tissue slide using 67495-1-Ig (EEF1A1 antibody) at dilution of 1:300 (under 40x lens). Heat mediated antigen retrieval with Tris-EDTA buffer (pH 9.0).



Immunofluorescent analysis of (-20°C Ethanol) fixed HepG2 cells using 67495-1-Ig (EEF1A1 antibody), at dilution of 1:200 and CoraLite®488-Conjugated AffiniPure Goat Anti-Mouse IgG(H+L).



1X10⁶ HepG2 cells were intracellularly stained with 0.4 ug Anti-Human EEF1A1 (67495-1-Ig, Clone:1A9F5) and CoraLite®488-Conjugated AffiniPure Goat Anti-Mouse IgG(H+L) at dilution 1:1000 (red), or 0.4 ug Mouse IgG1 Isotype Control (MOPC-21) (65124-1-Ig, Clone: MOPC-21) (blue). Cells were fixed with 4% PFA and permeabilized with Flow Cytometry Perm Buffer (PF00011-C).