

For Research Use Only

# RBM15B Monoclonal antibody



Catalog Number: 67506-1-Ig **1 Publications**

## Basic Information

<b>Catalog Number:</b> 67506-1-Ig	<b>GenBank Accession Number:</b> BC001367	<b>Purification Method:</b> Protein A purification
<b>Size:</b> 150ul , Concentration: 1000 µg/ml by Bradford method using BSA as the standard;	<b>GeneID (NCBI):</b> 29890	<b>CloneNo.:</b> 1C2C11
<b>Source:</b> Mouse	<b>Full Name:</b> RNA binding motif protein 15B	<b>Recommended Dilutions:</b> WB 1:1000-1:6000
<b>Isotype:</b> IgG1	<b>Calculated MW:</b> 890 aa, 97 kDa	
<b>Immunogen Catalog Number:</b> AG17853	<b>Observed MW:</b> 105 kDa	

## Applications

<b>Tested Applications:</b> WB,ELISA	<b>Positive Controls:</b> WB : HeLa cells, A549 cells, COLO 320 cells, K-562 cells, LNCaP cells
<b>Cited Applications:</b> WB	
<b>Species Specificity:</b> Human	
<b>Cited Species:</b> human	

## Background Information

RBM15B, one members of the SPEN (Split-end) family of proteins, have repressor function in several signaling pathways and may bind to RNA through interaction with spliceosome components. Present polyclonal anti-RBM15B antibody was produced by immunizing animals with C-terminus of RBM15B, which homolog with a short form of RBM15B(563aa, ~70kDa).

## Notable Publications

Author	Pubmed ID	Journal	Application
Keiko Horiuchi	34582888	J Biol Chem	WB

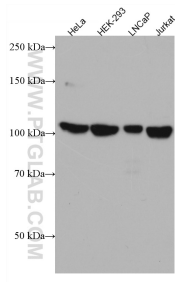
## Storage

**Storage:**  
Store at -20°C.  
**Storage Buffer:**  
PBS with 0.02% sodium azide and 50% glycerol pH 7.3.  
Aliquoting is unnecessary for -20°C storage

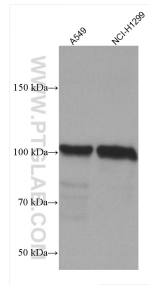
For technical support and original validation data for this product please contact:  
T: 1 (888) 4PTGLAB (1-888-478-4522) (toll free in USA), or 1(312) 455-8498 (outside USA) E: proteintech@ptglab.com W: ptglab.com

This product is exclusively available under Proteintech Group brand and is not available to purchase from any other manufacturer.

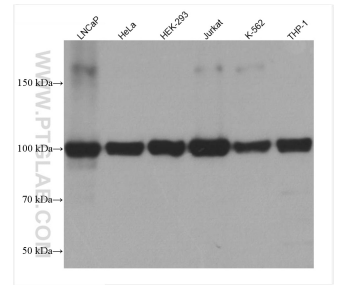
## Selected Validation Data



Various lysates were subjected to SDS PAGE followed by western blot with 67506-1-Ig (RBM15B antibody) at dilution of 1:3000 incubated at room temperature for 1.5 hours.



A549 cells were subjected to SDS PAGE followed by western blot with 67506-1-Ig (RBM15B antibody) at dilution of 1:10000 incubated at room temperature for 1.5 hours.



Various lysates were subjected to SDS PAGE followed by western blot with 67506-1-Ig (RBM15B antibody) at dilution of 1:10000 incubated at room temperature for 1.5 hours.