

For Research Use Only

GPT/ALT1 Monoclonal antibody

Catalog Number: 67531-1-Ig



Basic Information

Catalog Number: 67531-1-Ig	GenBank Accession Number: BC018207	Purification Method: Protein G purification
Size: 150ul , Concentration: 2300 ug/ml by Nanodrop and 1000 ug/ml by Bradford method using BSA as the standard;	GeneID (NCBI): 2875	CloneNo.: 5F6B5
Source: Mouse	UNIPROT ID: P24298	Recommended Dilutions: WB 1:5000-1:50000 IF/ICC 1:50-1:500
Isotype: IgG1	Full Name: glutamic-pyruvate transaminase (alanine aminotransferase)	
Immunogen Catalog Number: AG10453	Calculated MW: 496 aa, 55 kDa	
	Observed MW: 52 kDa	

Applications

Tested Applications: WB, IF/ICC, ELISA	Positive Controls:
Species Specificity: human, mouse, rat, pig	WB : human milk, pig heart tissue, pig liver tissue, rat liver tissue, mouse liver tissue, rabbit heart tissue
	IF/ICC : HepG2 cells,

Background Information

GPT, also known as ALT1 (glutamate-pyruvate transaminase 1), catalyzes the reversible transamination between alanine and 2-oxoglutarate to generate pyruvate and glutamate and, therefore, plays a key role in the intermediary metabolism of glucose and amino acids. Serum activity levels of this enzyme are routinely used as a biomarker of liver injury caused by drug toxicity, infection, alcohol, and steatosis. A related gene on chromosome 16 encodes a putative mitochondrial alanine aminotransaminase.

Storage

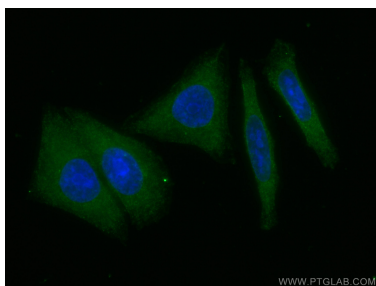
Storage:
Store at -20°C. Stable for one year after shipment.
Storage Buffer:
PBS with 0.02% sodium azide and 50% glycerol, pH7.3
Aliquoting is unnecessary for -20°C storage

*** 20ul sizes contain 0.1% BSA

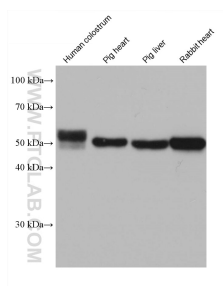
For technical support and original validation data for this product please contact:
T: 1 (888) 4PTGLAB (1-888-478-4522) (toll free in USA), or 1(312) 455-8498 (outside USA)
E: proteintech@ptglab.com
W: ptglab.com

This product is exclusively available under Proteintech Group brand and is not available to purchase from any other manufacturer.

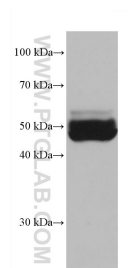
Selected Validation Data



Immunofluorescent analysis of (-20°C Ethanol) fixed HepG2 cells using GPT antibody (67531-1-Ig, Clone: 5F6B5) at dilution of 1:400 and CoraLite®488-Conjugated AffiniPure Goat Anti-Mouse IgG(H+L).



Various lysates were subjected to SDS PAGE followed by western blot with 67531-1-Ig (GPT/ALT1 antibody) at dilution of 1:10000 incubated at room temperature for 1.5 hours.



mouse liver tissue were subjected to SDS PAGE followed by western blot with 67531-1-Ig (GPT/ALT1 antibody) at dilution of 1:10000 incubated at room temperature for 1.5 hours.