

For Research Use Only

RHOC Monoclonal antibody

Catalog Number: 67542-1-Ig **1 Publications**



Basic Information

Catalog Number: 67542-1-Ig	GenBank Accession Number: BC007245	Purification Method: Protein A purification
Size: 150ul , Concentration: 2100 ug/ml by 389 Nanodrop and 1000 ug/ml by Bradford method using BSA as the standard;	GeneID (NCBI): 389	CloneNo.: 1G1C1
Source: Mouse	UNIPROT ID: P08134	Recommended Dilutions: WB: 1:5000-1:20000 IHC: 1:400-1:1600 IF/ICC: 1:200-1:800 FC (Intra): 0.40 ug per 10 ⁶ cells in a 100 µl suspension
Isotype: IgG1	Full Name: ras homolog gene family, member C	
Immunogen Catalog Number: AG14633	Calculated MW: 22 kDa	
	Observed MW: 22 kDa	

Applications

Tested Applications: WB, IHC, IF/ICC, FC (Intra), ELISA	Positive Controls: WB : LNCaP cells, HeLa cells, HepG2 cells, Jurkat cells, K-562 cells, HSC-T6 cells, C6 cells, NIH/3T3 cells, HEK- 293 cells, PC-12 cells, RAW 264.7 cells
Cited Applications: WB	IHC : human small intestine tissue,
Species Specificity: human, mouse, rat	IF/ICC : HeLa cells,
Cited Species: human	FC (Intra) : Jurkat cells, HepG2 cells
Note-IHC: suggested antigen retrieval with TE buffer pH 9.0; (*) Alternatively, antigen retrieval may be performed with citrate buffer pH 6.0	

Background Information

Ras homolog family member C (RHOC) encodes a Rho-related GTP-binding protein, which belongs to small GTPase superfamily and also Rho family. RHOC. Regulates a signal transduction pathway linking plasma membrane receptors to the assembly of focal adhesions and actin stress fibers. Expression of RHOC contributes to metastatic phenotype of melanoma cells and is associated with multiple cancers including gastric carcinomas, ovarian carcinomas and breast cancer as well.

Notable Publications

Author	Pubmed ID	Journal	Application
Lanqing Huo	40000633	Cell Death Dis	WB

Storage

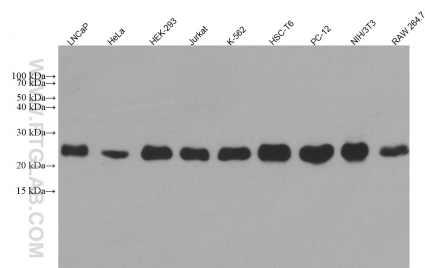
Storage:
Store at -20°C. Stable for one year after shipment.
Storage Buffer:
PBS with 0.02% sodium azide and 50% glycerol, pH7.3
Aliquoting is unnecessary for -20°C storage

*** 20ul sizes contain 0.1% BSA

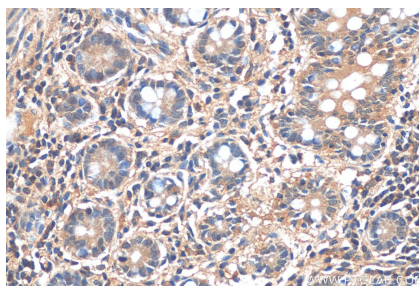
For technical support and original validation data for this product please contact:
T: 1 (888) 4PTGLAB (1-888-478-4522) (toll free in USA), or 1(312) 455-8498 (outside USA)
E: proteintech@ptglab.com
W: ptglab.com

This product is exclusively available under Proteintech Group brand and is not available to purchase from any other manufacturer.

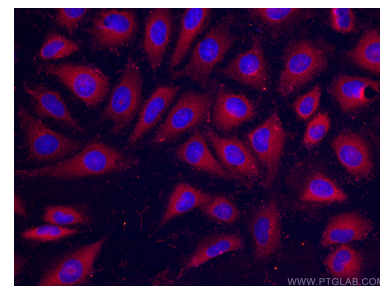
Selected Validation Data



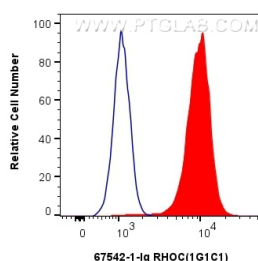
Various lysates were subjected to SDS PAGE followed by western blot with 67542-1-Ig (RHOC antibody) at dilution of 1:20000 incubated at room temperature for 1.5 hours.



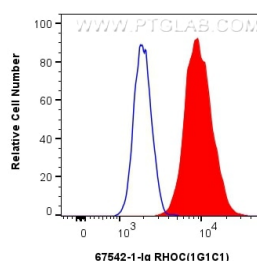
Immunohistochemical analysis of paraffin-embedded human small intestine tissue slide using 67542-1-Ig (RHOC antibody) at dilution of 1:800 (under 40x lens).



Immunofluorescent analysis of (4% PFA) fixed HeLa cells using RHOC antibody (67542-1-Ig, Clone: 1G1C1) at dilution of 1:400 and CoraLite®488-Conjugated AffiniPure Goat Anti-Mouse IgG(H+L).



1x10⁶ Jurkat cells were intracellularly stained with 0.4 ug RHOC Monoclonal antibody (67542-1-Ig, Clone:1G1C1) and CoraLite®488-Conjugated Goat Anti-Mouse IgG(H+L) (SA00013-1)(red), or 0.4 ug Mouse IgG1 isotype control Mouse McAb (66360-1-Ig, Clone: 1F8D3) (blue). Cells were fixed with 4% PFA and permeabilized with Flow Cytometry Perm Buffer (PF00011-C).



1x10⁶ HepG2 cells were intracellularly stained with 0.4 ug RHOC Monoclonal antibody (67542-1-Ig, Clone:1G1C1) and CoraLite®488-Conjugated Goat Anti-Mouse IgG(H+L) (SA00013-1)(red), or 0.4 ug Mouse IgG1 isotype control Mouse McAb (66360-1-Ig, Clone: 1F8D3) (blue). Cells were fixed with 4% PFA and permeabilized with Flow Cytometry Perm Buffer (PF00011-C).