

# PTP4A1 Monoclonal antibody

Catalog Number: 67584-1-Ig

## Basic Information

<b>Catalog Number:</b> 67584-1-Ig	<b>GenBank Accession Number:</b> BC023975	<b>Purification Method:</b> Protein A purification
<b>Size:</b> 150ul , Concentration: 1000 ug/ml by Nanodrop and 471 ug/ml by Bradford method using BSA as the standard;	<b>GeneID (NCBI):</b> 7803	<b>CloneNo.:</b> 2C9E10
<b>Source:</b> Mouse	<b>UNIPROT ID:</b> Q93096	<b>Recommended Dilutions:</b> WB 1:2000-1:10000 IHC 1:250-1:1000 IF/ICC 1:200-1:800
<b>Isotype:</b> IgG1	<b>Full Name:</b> protein tyrosine phosphatase type IVA, member 1	
<b>Immunogen Catalog Number:</b> AG14436	<b>Calculated MW:</b> 20 kDa	
	<b>Observed MW:</b> 18-20 kDa	

## Applications

**Tested Applications:**  
WB, IHC, IF/ICC, ELISA

**Species Specificity:**  
human, mouse, rat

**Note-IHC: suggested antigen retrieval with TE buffer pH 9.0; (\*) Alternatively, antigen retrieval may be performed with citrate buffer pH 6.0**

**Positive Controls:**

**WB :** LNCaP cells, Jurkat cells, HeLa cells, HepG2 cells, HEK-293 cells, HSC-T6 cells, NIH/3T3 cells

**IHC :** human lung cancer tissue,

**IF/ICC :** HeLa cells,

## Background Information

PTP4A1 (protein tyrosine phosphatase type IVA, member 1), also named as PRL1, HH72, PRL-1, PTP(CAAX1), PTPCAAX1, DKFZp779M0721, belongs to the protein-tyrosine phosphatase family, which play an important role in maintaining appropriate tyrosine phosphorylation levels in the cell during development and tissue regeneration (PMID:19341304). PTP4A1 is a PTPase and that it is highly expressed in growing hepatic cells and some tumor cell lines and is located primarily in the cell nucleus, and its overexpression modulates the growth of cells (PMID:8196618). PTP4A1 can exist as dimer, trimer and higher oligomers in vivo (PMID: 15571731, 18224294).

## Storage

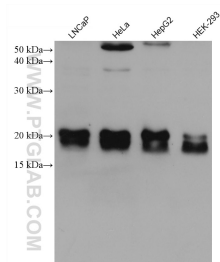
**Storage:**  
Store at -20°C. Stable for one year after shipment.  
**Storage Buffer:**  
PBS with 0.1% sodium azide and 50% glycerol pH 7.3.  
**Aliquoting is unnecessary for -20°C storage**

**\*\*\* 20ul sizes contain 0.1% BSA**

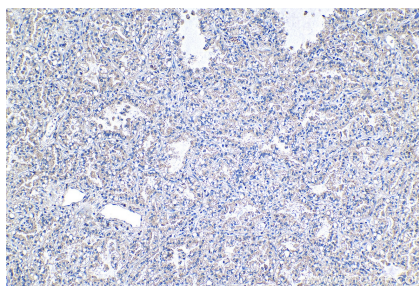
For technical support and original validation data for this product please contact:  
T: 1 (888) 4PTGLAB (1-888-478-4522) (toll free in USA), or 1(312) 455-8498 (outside USA)  
E: [proteintech@ptglab.com](mailto:proteintech@ptglab.com)  
W: [ptglab.com](http://ptglab.com)

This product is exclusively available under Proteintech Group brand and is not available to purchase from any other manufacturer.

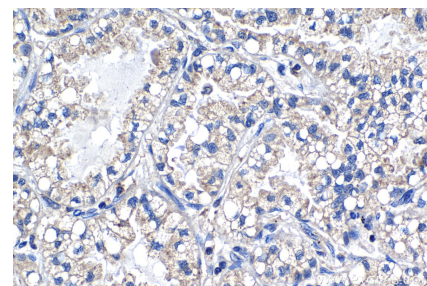
## Selected Validation Data



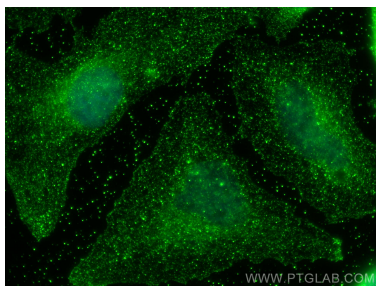
Various lysates were subjected to SDS PAGE followed by western blot with 67584-1-Ig (PTP4A1 antibody) at dilution of 1:5000 incubated at room temperature for 1.5 hours.



Immunohistochemical analysis of paraffin-embedded human lung cancer tissue slide using 67584-1-Ig (PTP4A1 antibody) at dilution of 1:500 (under 10x lens). Heat mediated antigen retrieval with Tris-EDTA buffer (pH 9.0).



Immunohistochemical analysis of paraffin-embedded human lung cancer tissue slide using 67584-1-Ig (PTP4A1 antibody) at dilution of 1:500 (under 40x lens). Heat mediated antigen retrieval with Tris-EDTA buffer (pH 9.0).



Immunofluorescent analysis of (4% PFA) fixed HeLa cells using PTP4A1 antibody (67584-1-Ig, Clone: 2C9E10) at dilution of 1:400 and CoraLite®488-Conjugated AffiniPure Goat Anti-Mouse IgG(H+L) (SA00013-1).