

For Research Use Only

ATM Monoclonal antibody

Catalog Number: 67586-1-Ig



Basic Information

Catalog Number: 67586-1-Ig	GenBank Accession Number: BC137169	Purification Method: Protein A purification
Size: 150UL, Concentration: 1000 µg/ml by 472 Bradford method using BSA as the standard;	GeneID (NCBI): 472	CloneNo.: 3E6F4
Source: Mouse	Full Name: ataxia telangiectasia mutated	Recommended Dilutions: WB 1:1000-1:5000 IF 1:50-1:500
Isotype: IgG1	Observed MW: 350 kDa	
Immunogen Catalog Number: AG30001		

Applications

Tested Applications: IF, WB, ELISA	Positive Controls:
Species Specificity: Human, Rat	WB: HeLa cells, HSC-T6 cells, HEK-293 cells, HepG2 cells IF: HeLa cells,

Background Information

The ATM protein is a member of the phosphatidylinositol 3-kinase family of proteins that respond to DNA damage by phosphorylating key substrates involved in DNA repair and/or cell cycle control. It is involved in mitogenic signal transduction, meiotic recombination, detection of DNA damage, and cell cycle control.

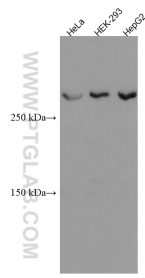
Storage

Storage:
Store at -20°C.
Storage Buffer:
PBS with 0.1% sodium azide and 50% glycerol pH 7.3.
Aliquoting is unnecessary for -20°C storage

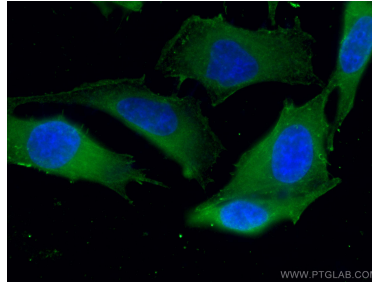
For technical support and original validation data for this product please contact:
T: 1 (888) 4PTGLAB (1-888-478-4522) (toll free in USA), or 1(312) 455-8498 (outside USA) E: proteintech@ptglab.com
W: ptglab.com

This product is exclusively available under Proteintech Group brand and is not available to purchase from any other manufacturer.

Selected Validation Data



Various lysates were subjected to SDS PAGE followed by western blot with 67586-1-Ig (ATM antibody) at dilution of 1:3000 incubated at room temperature for 1.5 hours.



Immunofluorescent analysis of (4% PFA) fixed HeLa cells using 67586-1-Ig (ATM antibody), at dilution of 1:200 and CoraLite®488-Conjugated AffiniPure Goat Anti-Mouse IgG(H+L).