

For Research Use Only

CD24 Monoclonal antibody

Catalog Number: 67627-1-Ig



Basic Information

Catalog Number: 67627-1-Ig	GenBank Accession Number: BC007674	Purification Method: Protein G purification
Size: 150UL, Concentration: 1000 µg/ml by Bradford method using BSA as the standard;	GeneID (NCBI): 100133941	CloneNo.: 1H5C4
Source: Mouse	Full Name: CD24 molecule	Recommended Dilutions: WB 1:5000-1:50000
Isotype: IgG1	Calculated MW: 8 kDa	
Immunogen Catalog Number: AG11679	Observed MW: 42 kDa	

Applications

Tested Applications: FC, WB, ELISA	Positive Controls: WB: MCF-7 cells, Raji cells, Ramos cells, Daudi cells, Jurkat cells, K-562 cells, HL-60 cells
Species Specificity: Human	

Background Information

CD24 (known as heat stable antigen) is a small highly glycosylated GPI-linked sialoprotein. It is normally expressed at the surface of most B lymphocytes and differentiating neuroblasts, and it is also up-regulated in a wide variety of cancers. Studies have shown that CD24 functions in the regulation of B-cell apoptosis, leukocyte signal transduction, and leukocyte adhesion. Since it is highly glycosylated, the apparent molecular weight of CD24 could be variable, ranging from 30 kDa to 70 kDa. (Ref: Akihiko Sano, MD., 2009)

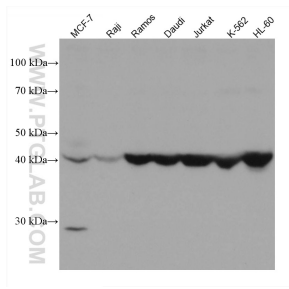
Storage

Storage:
Store at -20°C.
Storage Buffer:
PBS with 0.02% sodium azide and 50% glycerol pH 7.3.
Aliquoting is unnecessary for -20°C storage

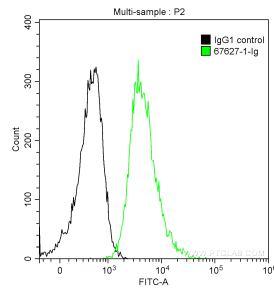
For technical support and original validation data for this product please contact:
T: 1 (888) 4PTGLAB (1-888-478-4522) (toll free in USA), or 1(312) 455-8498 (outside USA)
E: proteintech@ptglab.com
W: ptglab.com

This product is exclusively available under Proteintech Group brand and is not available to purchase from any other manufacturer.

Selected Validation Data



Various lysates were subjected to SDS PAGE followed by western blot with 67627-1-Ig (CD24 antibody) at dilution of 1:10000 incubated at room temperature for 1.5 hours.



1X10⁶ Ramos cells were stained with 0.2 ug Anti-Human CD24 (67627-1-Ig, Clone: 1H5C4) and CoraLite®488-Conjugated AffiniPure Goat Anti-Mouse IgG(H+L) at dilution 1:1000 (green), or stained with 0.2 ug isotype control antibody and CoraLite®488-Conjugated AffiniPure Goat Anti-Mouse IgG(H+L) at dilution 1:1000 (black). Samples were fixed with 90% MeOH.