

For Research Use Only

ICAM2 Monoclonal antibody

Catalog Number: 67628-1-Ig



Basic Information

Catalog Number:

67628-1-Ig

Size:

150UL, Concentration: 1000 µg/ml by 3384

Bradford method using BSA as the standard;

Source:

Mouse

Isotype:

IgG2a

Immunogen Catalog Number:

AG29441

GenBank Accession Number:

BC003097

GeneID (NCBI):

3384

Full Name:

intercellular adhesion molecule 2

Calculated MW:

31 kDa

Observed MW:

55-60 kDa

Purification Method:

Protein A purification

CloneNo.:

1H3C6

Recommended Dilutions:

WB 1:1000-1:6000

Applications

Tested Applications:

FC, WB, ELISA

Species Specificity:

Human

Positive Controls:

WB: human peripheral blood platelets, Jurkat cells

Background Information

ICAM2 is a cell adhesion protein having important roles in cell migration, especially during inflammation when leukocytes cross the endothelium. Initially described as a receptor for lymphocyte function-associated antigen-1 (LFA1), ICAM2 may play a role in lymphocyte recirculation by blocking LFA-1-dependent cell adhesion. It mediates adhesive interactions important for antigen-specific immune response, NK-cell mediated clearance, lymphocyte recirculation, and other cellular interactions important for immune response and surveillance.

Storage

Storage:

Store at -20°C.

Storage Buffer:

PBS with 0.02% sodium azide and 50% glycerol pH 7.3.

Aliquoting is unnecessary for -20°C storage

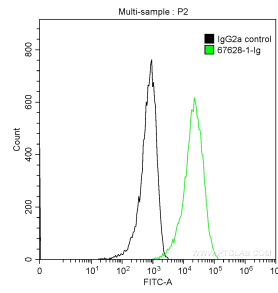
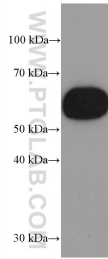
For technical support and original validation data for this product please contact:

T: 1 (888) 4PTGLAB (1-888-478-4522) (toll free in USA), or 1(312) 455-8498 (outside USA)

E: proteintech@ptglab.com
W: ptglab.com

This product is exclusively available under Proteintech Group brand and is not available to purchase from any other manufacturer.

Selected Validation Data



human peripheral blood platelets were subjected to SDS PAGE followed by western blot with 67628-1-Ig (ICAM2 antibody) at dilution of 1:3000 incubated at room temperature for 1.5 hours.

1×10^6 HUVEC cells were stained with 0.2 μ g Anti-Human ICAM2 (67628-1-Ig, Clone:1H3C6) and CoraLite[®]488-Conjugated AffiniPure Goat Anti-Mouse IgG(H+L) at dilution 1:1000 (green), or stained with 0.2 μ g mouse IgG2a isotype control and CoraLite[®]488-Conjugated AffiniPure Goat Anti-Mouse IgG(H+L) at dilution 1:1000 (black). Cells were fixed with 90% MeOH.