

For Research Use Only

CYR61/CCN1 Monoclonal antibody

Catalog Number: 67656-1-Ig **6 Publications**



Basic Information

Catalog Number: 67656-1-Ig	GenBank Accession Number: BC001271	Purification Method: Protein G purification
Size: 150ul , Concentration: 1000 ug/ml by Nanodrop;	GeneID (NCBI): 3491	CloneNo.: 2E11F11
Source: Mouse	UNIPROT ID: O00622	Recommended Dilutions: WB: 1:5000-1:20000 IHC: 1:500-1:2000 IF/ICC: 1:500-1:2000
Isotype: IgG1	Full Name: cysteine-rich, angiogenic inducer, 61	
Immunogen Catalog Number: AG25129	Calculated MW: 42 kDa	
	Observed MW: 40-42 kDa	

Applications

Tested Applications: WB, IHC, IF/ICC, ELISA	Positive Controls: WB : U2OS cells, A431 cells, PC-3 cells, HeLa cells, MDA-MB-231 cells IHC : human liver cancer tissue, human stomach cancer tissue IF/ICC : MCF-7 cells, A431 cells
Cited Applications: WB, IHC	
Species Specificity: human	
Cited Species: human, mouse	
Note-IHC: suggested antigen retrieval with TE buffer pH 9.0; (*) Alternatively, antigen retrieval may be performed with citrate buffer pH 6.0	

Notable Publications

Author	Pubmed ID	Journal	Application
Yanzi Zang	34515990	Hum Cell	WB
Yuan Hu	34826200	Environ Toxicol	WB
Xinchen Huang	40339921	Mech Ageing Dev	WB

Storage

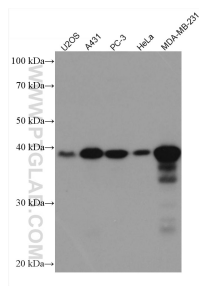
Storage:
Store at -20°C. Stable for one year after shipment.
Storage Buffer:
PBS with 0.02% sodium azide and 50% glycerol, pH7.3
Aliquoting is unnecessary for -20°C storage

*** 20ul sizes contain 0.1% BSA

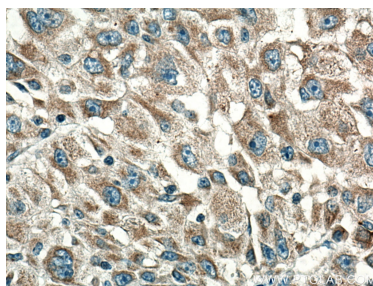
For technical support and original validation data for this product please contact:
T: 1 (888) 4PTGLAB (1-888-478-4522) (toll free in USA), or 1(312) 455-8498 (outside USA)
E: proteintech@ptglab.com
W: ptglab.com

This product is exclusively available under Proteintech Group brand and is not available to purchase from any other manufacturer.

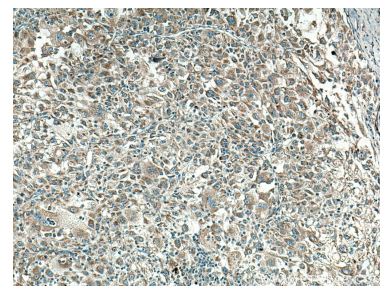
Selected Validation Data



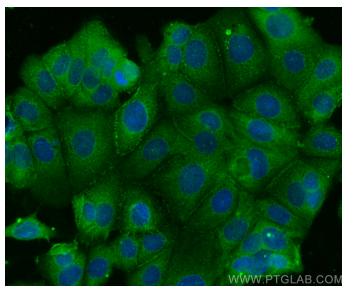
Various lysates were subjected to SDS PAGE followed by western blot with 67656-1-Ig (CYR61 antibody) at dilution of 1:10000 incubated at room temperature for 1.5 hours.



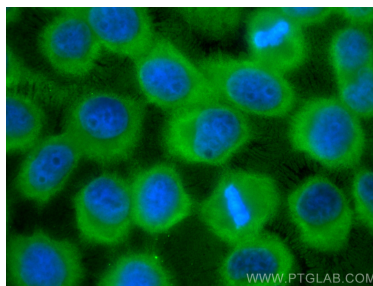
Immunohistochemical analysis of paraffin-embedded human liver cancer tissue slide using 67656-1-Ig (CYR61 antibody) at dilution of 1:1000 (under 40x lens). Heat mediated antigen retrieval with Tris-EDTA buffer (pH 9.0).



Immunohistochemical analysis of paraffin-embedded human liver cancer tissue slide using 67656-1-Ig (CYR61 antibody) at dilution of 1:1000 (under 10x lens). Heat mediated antigen retrieval with Tris-EDTA buffer (pH 9.0).



Immunofluorescent analysis of (4% PFA) fixed MCF-7 cells using CYR61 antibody (67656-1-Ig, Clone: 2E11F11) at dilution of 1:1000 and CoraLite®488-Conjugated AffiniPure Goat Anti-Mouse IgG(H+L).



Immunofluorescent analysis of (-20°C Ethanol) fixed A431 cells using CYR61 antibody (67656-1-Ig, Clone: 2E11F11) at dilution of 1:400 and CoraLite®488-Conjugated AffiniPure Goat Anti-Mouse IgG(H+L).