

For Research Use Only

UBE2I-Specific Monoclonal ANTIBODY



Catalog Number: 67660-1-Ig

Basic Information

Catalog Number:

67660-1-Ig

Size:

150UL, Concentration: 1000 µg/ml by 7329

Bradford method using BSA as the standard;

Source:

Mouse

Isotype:

IgG1

GenBank Accession Number:

NM_003345

GeneID (NCBI):

7329

Full Name:

ubiquitin-conjugating enzyme E2
(UBC9 homolog, yeast)

Calculated MW:

18 kDa

Observed MW:

18 kDa

Purification Method:

Protein G purification

CloneNo.:

1G8A2

Recommended Dilutions:

WB 1:5000-1:50000

Applications

Tested Applications:

WB, ELISA

Species Specificity:

Human, mouse, rat

Positive Controls:

WB: A549 cells, HeLa cells, HEK-293 cells, HepG2 cells,
Jurkat cells, HSC-T6 cells, NIH/3T3 cells

Background Information

UBC9 is also named as UBE2I, UBCE9 and belongs to the ubiquitin-conjugating enzyme family. It is a homologue of the E2 ubiquitin conjugating enzyme and participates in the covalent linking of SUMO-1 molecule to the target protein. This protein is present at a high level in spleen and lung. Moderate level of UBC9 is detected in kidney and liver. Low amount of UBC9 is observed in brain, whereas the 18 kDa band of UBC9 is barely visible or absent in heart and skeletal muscle. In heart and muscle extracts the UBC9 antibodies recognizes a 38 kDa protein band, but this band is not visible in extracts of other rat tissues (PMID:14739995).

Storage

Storage:

Store at -20°C.

Storage Buffer:

PBS with 0.1% sodium azide and 50% glycerol pH 7.3.

Aliquoting is unnecessary for -20°C storage

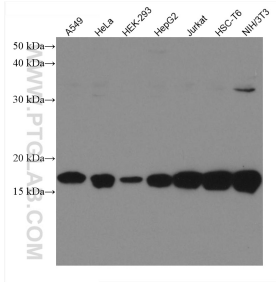
For technical support and original validation data for this product please contact:

T: 1 (888) 4PTGLAB (1-888-478-4522) (toll free
in USA), or 1(312) 455-8498 (outside USA)

E: proteintech@ptglab.com
W: ptglab.com

This product is exclusively available under Proteintech Group brand and is not available to purchase from any other manufacturer.

Selected Validation Data



Various lysates were subjected to SDS PAGE followed by western blot with 67660-1-Ig (UBE2I-Specific antibody) at dilution of 1:10000 incubated at room temperature for 1.5 hours.