

For Research Use Only

# cyclin B1 Monoclonal antibody

Catalog Number: 67686-1-Ig



## Basic Information

Catalog Number:

67686-1-Ig

Size:

150ul , Concentration: 500 µg/ml by Bradford method using BSA as the standard;

Source:

Mouse

Isotype:

IgG1

Immunogen Catalog Number:

AG29444

GenBank Accession Number:

BC006510

GeneID (NCBI):

891

Full Name:

cyclin B1

Calculated MW:

48 kDa

Observed MW:

55 kDa

Purification Method:

Protein G purification

CloneNo.:

1F3G11

Recommended Dilutions:

WB 1:2000-1:10000

## Applications

Tested Applications:

FC, WB, ELISA

Species Specificity:

Human, mouse, rat

Positive Controls:

WB : A549 cells, NIH/3T3 cells, HSC-T6 cells, K-562 cells, Jurkat cells, HEK-293 cells, HeLa cells

## Background Information

Cyclin B1 is a regulatory protein involved in mitosis. The gene product complexes with p34(cdc2) to form the maturation-promoting factor (MPF). Two alternative transcripts have been found, a constitutively expressed transcript and a cell cycle-regulated transcript, that is expressed predominantly during G2/M phase of the cell cycle. The different transcripts result from the use of alternate transcription initiation sites. The antibody is specific to CCNB1. We got a 55-60 kDa band in western blotting maybe due to phosphorylation.

## Storage

Storage:

Store at -20°C.

Storage Buffer:

PBS with 0.02% sodium azide and 50% glycerol pH 7.3.

Aliquoting is unnecessary for -20°C storage

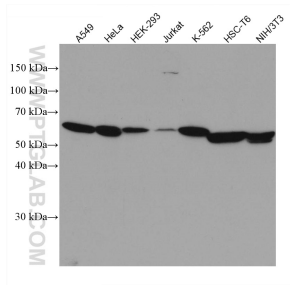
For technical support and original validation data for this product please contact:

T: 1 (888) 4PTGLAB (1-888-478-4522) (toll free in USA), or 1(312) 455-8498 (outside USA)

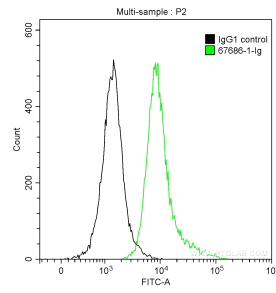
E: [proteintech@ptglab.com](mailto:proteintech@ptglab.com)  
W: [ptglab.com](http://ptglab.com)

**This product is exclusively available under Proteintech Group brand and is not available to purchase from any other manufacturer.**

## Selected Validation Data



Various cells were subjected to SDS PAGE followed by western blot with 67686-1-Ig (cyclin B1 antibody) at dilution of 1:5000 incubated at room temperature for 1.5 hours.



1X10<sup>6</sup> Jurkat cells were intracellularly stained with 0.2 ug Anti-Human cyclin B1 (67686-1-Ig, Clone:1F3G11) and CoraLite® 488-Conjugated AffiniPure Goat Anti-Mouse IgG(H+L) at dilution 1:1000 (green), and 0.2 ug Mouse IgG1 Isotype Control (66360-1-Ig, Clone: T1F8D3F10) (black). Cells were fixed with 90% MeOH.