

For Research Use Only

DLD Monoclonal antibody

Catalog Number: 67702-1-Ig



Basic Information

Catalog Number:

67702-1-Ig

Size:

150UL, Concentration: 500 µg/ml by Bradford method using BSA as the standard;

Source:

Mouse

Isotype:

IgG1

Immunogen Catalog Number:

AG9680

GenBank Accession Number:

BC018696

GeneID (NCBI):

1738

Full Name:

dihydroipoamide dehydrogenase

Calculated MW:

509 aa, 54 kDa

Purification Method:

Protein G purification

CloneNo.:

2E7G5

Recommended Dilutions:

WB 1:2000-1:10000

IHC 1:250-1:1000

Applications

Tested Applications:

IHC, WB, ELISA

Species Specificity:

Human, mouse, rat

Note-IHC: suggested antigen retrieval with TE buffer pH 9.0; (*) Alternatively, antigen retrieval may be performed with citrate buffer pH 6.0

Positive Controls:

WB: HuH-7 cells, NIH/3T3 cells, HSC-T6 cells, LO2 cells, HepG2 cells, Hela cells, Jurkat cells

IHC: human liver cancer tissue,

Background Information

DLD(Dihydroipoamide dehydrogenase, mitochondrial) is also named as GCSL, LAD, PHE3 and belongs to the class-I pyridine nucleotide-disulfide oxidoreductase family. It catalyzes the oxidation of dihydroipoamide, hE3 uses two molecules: non-covalently bound FAD and a transiently bound substrate, NAD⁺. DLD is involved in the hyperactivation of spermatazoa during capacitation and in the spermatazoal acrosome reaction.

Storage

Storage:

Store at -20°C.

Storage Buffer:

PBS with 0.1% sodium azide and 50% glycerol pH 7.3.

Aliquoting is unnecessary for -20°C storage

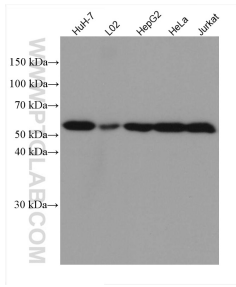
For technical support and original validation data for this product please contact:

T: 1 (888) 4PTGLAB (1-888-478-4522) (toll free in USA), or 1(312) 455-8498 (outside USA)

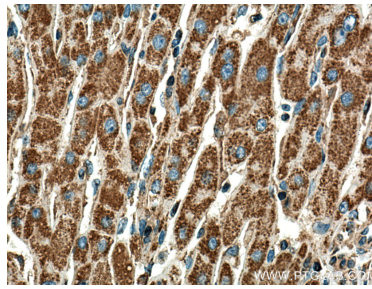
E: proteintech@ptglab.com
W: ptglab.com

This product is exclusively available under Proteintech Group brand and is not available to purchase from any other manufacturer.

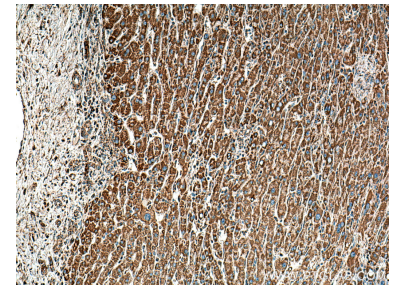
Selected Validation Data



Various lysates were subjected to SDS PAGE followed by western blot with 67702-1-Ig (DLD antibody) at dilution of 1:5000 incubated at room temperature for 1.5 hours.



Immunohistochemical analysis of paraffin-embedded human liver cancer tissue slide using 67702-1-Ig (DLD antibody) at dilution of 1:500 (under 40x lens). Heat mediated antigen retrieval with Tris-EDTA buffer (pH 9.0).



Immunohistochemical analysis of paraffin-embedded human liver cancer tissue slide using 67702-1-Ig (DLD antibody) at dilution of 1:500 (under 10x lens). Heat mediated antigen retrieval with Tris-EDTA buffer (pH 9.0).