

For Research Use Only

# LAMC1 Monoclonal antibody

Catalog Number: 67706-1-Ig

Featured Product

4 Publications



## Basic Information

Catalog Number:

67706-1-Ig

Size:

150ul, Concentration: 1000 ug/ml by Nanodrop;

Source:

Mouse

Isotype:

IgG1

Immunogen Catalog Number:

AG14674

GenBank Accession Number:

BC015586

GeneID (NCBI):

3915

UNIPROT ID:

P11047

Full Name:

laminin, gamma 1 (formerly LAMB2)

Calculated MW:

178 kDa

Observed MW:

200-220 kDa

Purification Method:

Protein G purification

CloneNo.:

1G2G4

Recommended Dilutions:

WB: 1:2000-1:10000

IF/ICC: 1:400-1:1600

## Applications

Tested Applications:

WB, IF/ICC, ELISA

Cited Applications:

WB, IF

Species Specificity:

human, rat, pig

Cited Species:

human, mouse, rat

Positive Controls:

WB : HeLa cells, human placenta tissue, LNCaP cells, pig rectum tissue, rat rectum tissue, HepG2 cells, JAR cells

IF/ICC : HeLa cells,

## Notable Publications

Author	Pubmed ID	Journal	Application
Dan Liu	34425157	Neuroscience	WB
Jianrong Bai	38678297	J Transl Med	WB
Qiaowei Wu	38609046	Exp Neurol	WB,IF

## Storage

Storage:

Store at -20°C. Stable for one year after shipment.

Storage Buffer:

PBS with 0.02% sodium azide and 50% glycerol, pH7.3

Aliquoting is unnecessary for -20°C storage

\*\*\* 20ul sizes contain 0.1% BSA

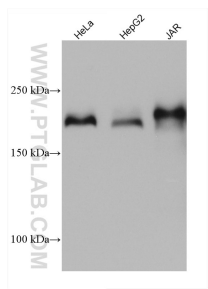
For technical support and original validation data for this product please contact:

T: 1 (888) 4PTGLAB (1-888-478-4522) (toll free in USA), or 1(312) 455-8498 (outside USA)

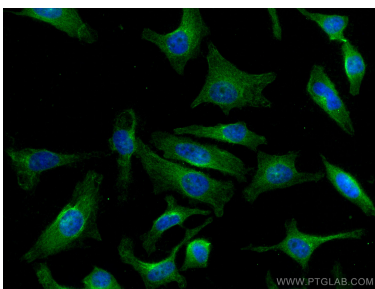
E: [proteintech@ptglab.com](mailto:proteintech@ptglab.com)  
W: [ptglab.com](http://ptglab.com)

This product is exclusively available under Proteintech Group brand and is not available to purchase from any other manufacturer.

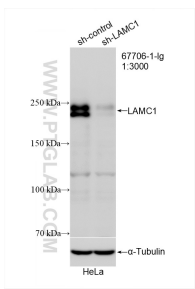
Selected Validation Data



Various lysates were subjected to SDS PAGE followed by western blot with 67706-1-Ig (LAMC1 antibody) at dilution of 1:5000 incubated at room temperature for 1.5 hours.



Immunofluorescent analysis of (4% PFA) fixed HeLa cells using LAMC1 antibody (67706-1-Ig, Clone: 1G2G4 ) at dilution of 1:800 and CoraLite®488-Conjugated AffiniPure Goat Anti-Mouse IgG(H+L).



WB result of LAMC1 antibody (67706-1-Ig; 1:3000; incubated at room temperature for 1.5 hours) with sh-Control and sh-LAMC1 transfected HeLa cells.