

For Research Use Only

TXNRD1 Monoclonal antibody

Catalog Number: 67728-1-Ig 1 Publications



Basic Information

Catalog Number: 67728-1-Ig	GenBank Accession Number: BC018122	Purification Method: Protein G purification
Size: 150UL, Concentration: 500 µg/ml by Nanodrop and 294 µg/ml by Bradford method using BSA as the standard;	GeneID (NCBI): 7296	CloneNo.: 1B10C4
Source: Mouse	Full Name: thioredoxin reductase 1	Recommended Dilutions: WB 1:5000-1:50000 IHC 1:500-1:2000 IF 1:200-1:800
Isotype: IgG1	Calculated MW: 55 kDa	
Immunogen Catalog Number: AG30071	Observed MW: 50-70 kDa	

Applications

Tested Applications: IF, IHC, WB, ELISA	Positive Controls: WB : HSC-T6 cells, A549 cells, PC-12 cells, NIH/3T3 cells, 4T1 cells, HeLa cells, HEK-293 cells, Jurkat cells, K-562 cells
Cited Applications: WB	IHC : human liver cancer tissue,
Species Specificity: Human, mouse, rat	IF : HeLa cells,
Cited Species: mouse	
Note-IHC: suggested antigen retrieval with TE buffer pH 9.0; (*) Alternatively, antigen retrieval may be performed with citrate buffer pH 6.0	

Background Information

Thioredoxin reductase-1 (TXNRD1) is uniquely capable of utilizing electrons from NADPH to recover the reduced state of TRX1. Interestingly, TXNRD1 is upregulated in many human malignancies and promotes cancer progression, and attenuation of TXNRD1 levels effectively suppresses the growth of tumor cells (PMID: 31384178). TXNRD1 is also upregulated in many human malignancies and functions as a prognostic factor for many tumors, such as oral squamous cell carcinomas, lung cancer, breast cancer, and astrocytomas. TXNRD1 protein levels were analyzed by immunoblotting. Bands of ~55 kDa for TXNRD1 were observed. IHC analysis suggested TXNRD1 was mainly located in the cytoplasm. (PMID: 28536696, PMID: 20584310)

Notable Publications

Author	Pubmed ID	Journal	Application
Weiwei Yi	33789111	Cell Rep	WB

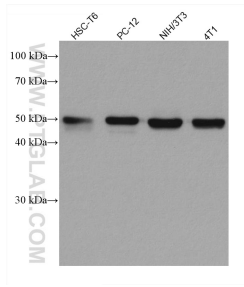
Storage

Storage:
Store at -20°C.
Storage Buffer:
PBS with 0.02% sodium azide and 50% glycerol pH 7.3.
Aliquoting is unnecessary for -20°C storage

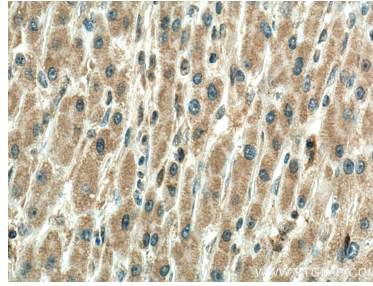
For technical support and original validation data for this product please contact:
T: 1 (888) 4PTGLAB (1-888-478-4522) (toll free in USA), or 1(312) 455-8498 (outside USA)
E: proteintech@ptglab.com
W: ptglab.com

This product is exclusively available under Proteintech Group brand and is not available to purchase from any other manufacturer.

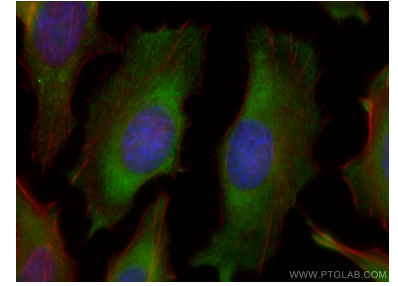
Selected Validation Data



Various lysates were subjected to SDS PAGE followed by western blot with 67728-1-Ig (TXNRD1 antibody) at dilution of 1:10000 incubated at room temperature for 1.5 hours.



Immunohistochemical analysis of paraffin-embedded human liver cancer tissue slide using 67728-1-Ig (TXNRD1 antibody) at dilution of 1:1000 (under 40x lens). Heat mediated antigen retrieval with Tris-EDTA buffer (pH 9.0).



Immunofluorescent analysis of (-20°C Ethanol) fixed HeLa cells using TXNRD1 antibody (67728-1-Ig, Clone: 1B10C4) at dilution of 1:400 and CoraLite®488-Conjugated AffiniPure Goat Anti-Mouse IgG(H+L), CL594-Phalloidin (red).