

For Research Use Only

# CAPN1 Monoclonal antibody

Catalog Number: 67732-1-Ig **Featured Product**



## Basic Information

<b>Catalog Number:</b> 67732-1-Ig	<b>GenBank Accession Number:</b> BC008751	<b>Purification Method:</b> Protein A purification
<b>Size:</b> 150ul , Concentration: 500 µg/ml by Nanodrop and 229 µg/ml by Bradford method using BSA as the standard;	<b>GeneID (NCBI):</b> 823	<b>CloneNo.:</b> 4E6H1
<b>Source:</b> Mouse	<b>Full Name:</b> calpain 1, (mu/l) large subunit	<b>Recommended Dilutions:</b> WB 1:5000-1:50000 IHC 1:500-1:2000
<b>Isotype:</b> IgG2b	<b>Calculated MW:</b> 704 aa, 82 kDa	
<b>Immunogen Catalog Number:</b> AG30522	<b>Observed MW:</b> 75 kDa	

## Applications

<b>Tested Applications:</b> IHC, WB, ELISA	<b>Positive Controls:</b>
<b>Species Specificity:</b> Human	<b>WB:</b> A431 cells, HeLa cells, Jurkat cells, LNCaP cells, T-47D cells, K562 cells
<b>Note-IHC:</b> <i>suggested antigen retrieval with <b>TE buffer pH 9.0</b>; (*) Alternatively, antigen retrieval may be performed with <b>citrate buffer pH 6.0</b></i>	<b>IHC:</b> human urothelial carcinoma tissue, human heart tissue

## Background Information

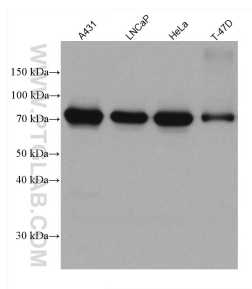
### Storage

**Storage:**  
Store at -20°C.  
**Storage Buffer:**  
PBS with 0.02% sodium azide and 50% glycerol pH 7.3.  
Aliquoting is unnecessary for -20°C storage

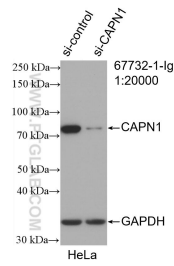
For technical support and original validation data for this product please contact:  
T: 1 (888) 4PTGLAB (1-888-478-4522) (toll free in USA), or 1(312) 455-8498 (outside USA)      E: proteintech@ptglab.com  
W: ptglab.com

**This product is exclusively available under Proteintech Group brand and is not available to purchase from any other manufacturer.**

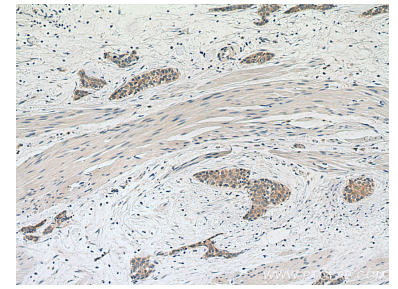
## Selected Validation Data



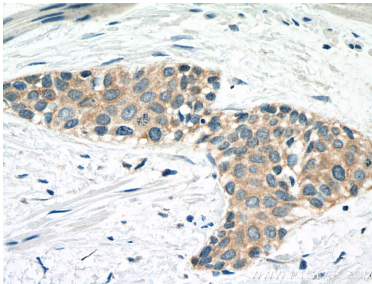
Various lysates were subjected to SDS PAGE followed by western blot with 67732-1-Ig (CAPN1 antibody) at dilution of 1:10000 incubated at room temperature for 1.5 hours.



WB result of CAPN1 antibody (67732-1-Ig; 1:20000; incubated at room temperature for 1.5 hours) with sh-Control and sh-CAPN1 transfected HeLa cells.



Immunohistochemical analysis of paraffin-embedded human urothelial carcinoma tissue slide using 67732-1-Ig (CAPN1 antibody) at dilution of 1:1000 (under 10x lens). Heat mediated antigen retrieval with Tris-EDTA buffer (pH 9.0).



Immunohistochemical analysis of paraffin-embedded human urothelial carcinoma tissue slide using 67732-1-Ig (CAPN1 antibody) at dilution of 1:1000 (under 40x lens). Heat mediated antigen retrieval with Tris-EDTA buffer (pH 9.0).