

For Research Use Only

METTL3 Monoclonal antibody

Catalog Number: 67733-2-Ig



Basic Information

Catalog Number: 67733-2-Ig	GenBank Accession Number: BC001650	Purification Method: Protein G purification
Size: 150ul , Concentration: 1000 µg/ml by Nanodrop;	GeneID (NCBI): 56339	CloneNo.: 4B4A3
Source: Mouse	Full Name: methyltransferase like 3	Recommended Dilutions: WB 1:5000-1:50000 IHC 1:500-1:2000
Isotype: IgG1	Calculated MW: 64 kDa	
Immunogen Catalog Number: AG7110	Observed MW: 70 kDa	

Applications

Tested Applications:

IHC, WB, ELISA

Species Specificity:

Human, mouse

Note-IHC: suggested antigen retrieval with TE buffer pH 9.0; (*) Alternatively, antigen retrieval may be performed with citrate buffer pH 6.0

Positive Controls:

WB : HeLa cells, HEK-293 cells, HepG2 cells, Jurkat cells, K-562 cells, Neuro-2a cells, NIH/3T3 cells

IHC : human lung cancer tissue, human urothelial carcinoma tissue, mouse testis tissue

Background Information

METTL3 is a key S-adenosyl-L-methionine-binding subunit, which is component of a complex multicomponent enzyme that catalyzes the methylation of internal adenosine residues in eukaryotic mRNA, forming N6-methyladenosine. It contains 2 putative nuclear localization signals and 2 consensus methylation motifs. The calculated molecular weight of METTL3 is 64 kDa, but modified METTL3 is about 65-70 kDa.

Storage

Storage:

Store at -20°C.

Storage Buffer:

PBS with 0.02% sodium azide and 50% glycerol pH 7.3.

Aliquoting is unnecessary for -20°C storage

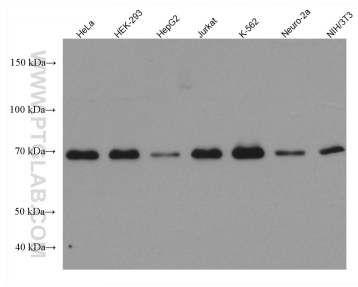
For technical support and original validation data for this product please contact:

T: 1 (888) 4PTGLAB (1-888-478-4522) (toll free in USA), or 1(312) 455-8498 (outside USA)

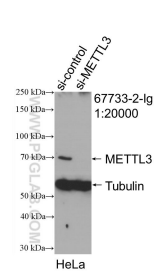
E: proteintech@ptglab.com
W: ptglab.com

This product is exclusively available under Proteintech Group brand and is not available to purchase from any other manufacturer.

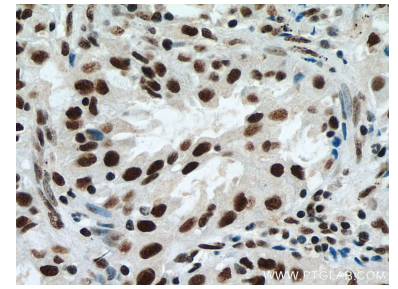
Selected Validation Data



Various lysates were subjected to SDS PAGE followed by western blot with 67733-2-Ig (METTL3 antibody) at dilution of 1:10000 incubated at room temperature for 1.5 hours.



WB result of METTL3 antibody (67733-2-Ig; 1:10000; incubated at room temperature for 1.5 hours) with sh-Control and sh-METTL3 transfected HeLa cells.



Immunohistochemical analysis of paraffin-embedded human lung cancer tissue slide using 67733-2-Ig (METTL3 antibody) at dilution of 1:1000 (under 40x lens). Heat mediated antigen retrieval with Tris-EDTA buffer (pH 9.0).