

For Research Use Only

Alpha smooth muscle actin specific Monoclonal antibody

Catalog Number: 67735-1-Ig **187 Publications**



Basic Information

Catalog Number: 67735-1-Ig	GenBank Accession Number: NM_001613	Purification Method: Protein A purification
Size: 150ul , Concentration: 500 ug/ml by Nanodrop;	GeneID (NCBI): 59	CloneNo.: 1E9A11
Source: Mouse	UNIPROT ID: P62736	Recommended Dilutions: WB: 1:20000-1:100000 IHC: 1:2500-1:10000 IF-P: 1:200-1:800 IF-Fro: 1:200-1:800 IF/ICC: 1:200-1:800 FC (Intra): 0.40 ug per 10 ⁶ cells in a 100 µl suspension
Isotype: IgG1	Full Name: actin, alpha 2, smooth muscle, aorta	
	Calculated MW: 42 kDa	
	Observed MW: 42 kDa	

Applications

Tested Applications: WB, IHC, IF/ICC, IF-P, IF-Fro, FC (Intra), ELISA	Positive Controls: WB : rat stomach tissue, rabbit stomach tissue, pig vein tissue, pig stomach tissue, rabbit large intestine tissue, pig colon tissue, rat colon tissue, mouse colon tissue IHC : human colon tissue, human appendicitis tissue, human liver tissue, human liver cancer tissue, rat colon tissue IF-P : rat heart tissue, IF-Fro : mouse breast cancer, IF/ICC : C2C12 cells, FC (Intra) : C2C12 cells,
Cited Applications: WB, IHC, IF, ColP	
Species Specificity: human, mouse, rat, pig, rabbit	
Cited Species: human, mouse, rat, pig, zebrafish	
Note-IHC: suggested antigen retrieval with TE buffer pH 9.0; (*) Alternatively, antigen retrieval may be performed with citrate buffer pH 6.0	

Background Information

ACTA2 (also known as α -smooth muscle actin or α -SMA) belongs to the actin family. Actins are highly conserved proteins that are involved in various types of cell motility and are ubiquitously expressed in all eukaryotic cells. ACTA2 is primarily expressed in vascular smooth muscle and anti-ACTA2 is commonly used to marker smooth muscle cells.

Notable Publications

Author	Pubmed ID	Journal	Application
Longxiang Tu	34546211	Plast Reconstr Surg	WB
Silvia Specia	34529707	PLoS One	WB,IF
Ji-Ting Liu	34604241	Front Cell Dev Biol	WB

Storage

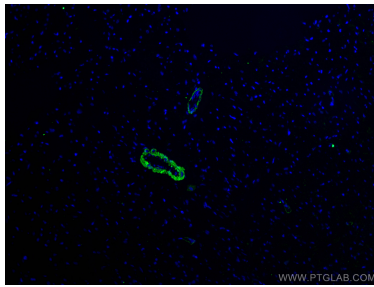
Storage:
Store at -20°C. Stable for one year after shipment.
Storage Buffer:
PBS with 0.02% sodium azide and 50% glycerol, pH7.3
Aliquoting is unnecessary for -20°C storage

*** 20ul sizes contain 0.1% BSA

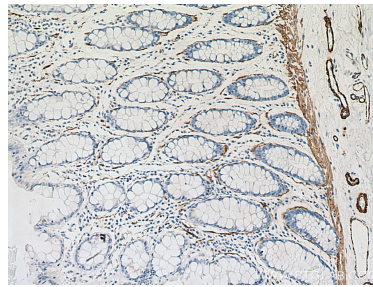
For technical support and original validation data for this product please contact:
T: 1 (888) 4PTGLAB (1-888-478-4522) (toll free in USA), or 1(312) 455-8498 (outside USA)
E: proteintech@ptglab.com
W: ptglab.com

This product is exclusively available under Proteintech Group brand and is not available to purchase from any other manufacturer.

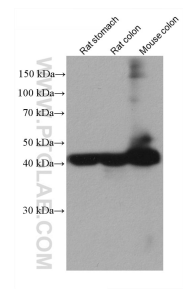
Selected Validation Data



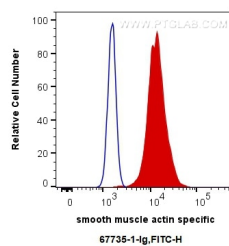
Immunofluorescent analysis of (4% PFA) fixed rat heart tissue using a-SMA specific antibody (67735-1-Ig, Clone: 1E9A11) at dilution of 1:400 and CoraLite®488-Conjugated AffiniPure Goat Anti-Mouse IgG(H+L).



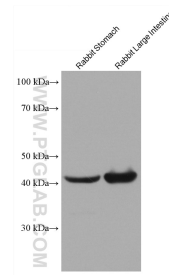
Immunohistochemical analysis of paraffin-embedded human colon tissue slide using 67735-1-Ig (a-SMA specific antibody) at dilution of 1:5000 (under 10x lens). Heat mediated antigen retrieval with Tris-EDTA buffer (pH 9.0).



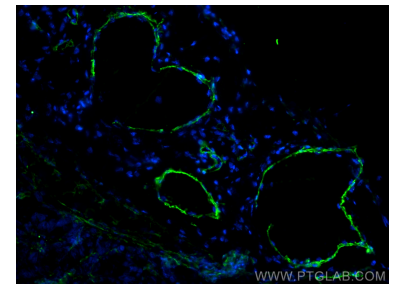
Various lysates were subjected to SDS PAGE followed by western blot with 67735-1-Ig (a-SMA specific antibody) at dilution of 1:50000 incubated at room temperature for 1.5 hours.



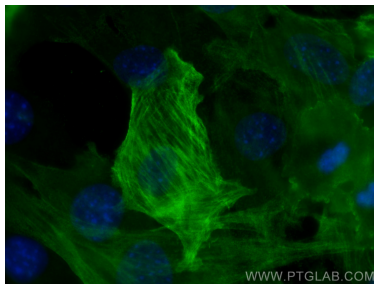
1X10⁶ C2C12 cells were intracellularly stained with 0.4 ug Anti-Human smooth muscle actin specific (67735-1-Ig, Clone:1E9A11) and CoraLite®488-Conjugated AffiniPure Goat Anti-Mouse IgG(H+L) at dilution 1:1000 (red), or 0.4 ug Control Antibody. Cells were fixed with 4% PFA and permeabilized with Flow Cytometry Perm Buffer (PF00011-C).



Various lysates were subjected to SDS PAGE followed by western blot with 67735-1-Ig (smooth muscle actin specific antibody) at dilution of 1:50000 incubated at room temperature for 1.5 hours.



Immunofluorescent analysis of (4% PFA) fixed frozen OCT-embedded mouse breast cancer using Alpha smooth muscle actin specific antibody (67735-1-Ig, Clone: 1E9A11) at dilution of 1:400 and CoraLite®488-Conjugated Goat Anti-Mouse IgG(H+L) (SA00013-1).



Immunofluorescent analysis of (-20°C Methanol) fixed C2C12 cells using smooth muscle actin specific antibody (67735-1-Ig, Clone: 1E9A11) at dilution of 1:400 and CoraLite®488-Conjugated AffiniPure Goat Anti-Mouse IgG(H+L).