

For Research Use Only

ALCAM Monoclonal antibody

Catalog Number: 67768-1-Ig **1 Publications**



Basic Information

Catalog Number: 67768-1-Ig	GenBank Accession Number: BC137097	Purification Method: Protein G purification
Size: 150ul , Concentration: 1000 ug/ml by Nanodrop;	GeneID (NCBI): 214	CloneNo.: 1F7D6
Source: Mouse	UNIPROT ID: Q13740	Recommended Dilutions: WB: 1:5000-1:50000 IHC: 1:500-1:2000 IF-P: 1:200-1:800 IF-Fro: 1:200-1:800 IF/ICC: 1:250-1:1000
Isotype: IgG1	Full Name: activated leukocyte cell adhesion molecule	
Immunogen Catalog Number: AG16892	Calculated MW: 583 aa, 65 kDa Observed MW: 90-100 kDa	

Applications

Tested Applications: WB, IHC, IF/ICC, IF-P, IF-Fro, ELISA	Positive Controls: WB : HT-1080 cells, U2OS cells, A549 cells, LNCaP cells
Cited Applications: WB	IHC : human breast cancer tissue,
Species Specificity: human	IF-P : human breast cancer tissue,
Cited Species: human	IF-Fro : mouse breast cancer,
	IF/ICC : hTERT-RPE1 cells,
Note-IHC: suggested antigen retrieval with TE buffer pH 9.0; (*) Alternatively, antigen retrieval may be performed with citrate buffer pH 6.0	

Background Information

Activated leukocyte cell adhesion molecule (ALCAM, also known as CD166) is a cell adhesion molecule that belongs to the immunoglobulin superfamily. It is involved in cell-cell adhesion through homophilic and heterophilic (to CD6) interactions. ALCAM is widely expressed in a variety of normal tissues. Altered ALCAM expression has been associated with the differentiation state and progression in some neoplasms including melanoma, prostate, colorectal, and breast cancers (PMID: 20461761; 18172759).

Notable Publications

Author	Pubmed ID	Journal	Application
Nathalia Williams	38945485	Antiviral Res	WB

Storage

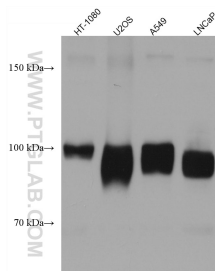
Storage:
Store at -20°C. Stable for one year after shipment.
Storage Buffer:
PBS with 0.02% sodium azide and 50% glycerol, pH7.3
Aliquoting is unnecessary for -20°C storage

*** 20ul sizes contain 0.1% BSA

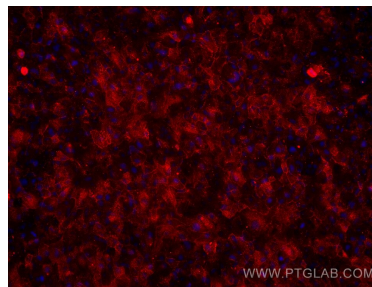
For technical support and original validation data for this product please contact:
T: 1 (888) 4PTGLAB (1-888-478-4522) (toll free in USA), or 1(312) 455-8498 (outside USA)
E: proteintech@ptglab.com
W: ptglab.com

This product is exclusively available under Proteintech Group brand and is not available to purchase from any other manufacturer.

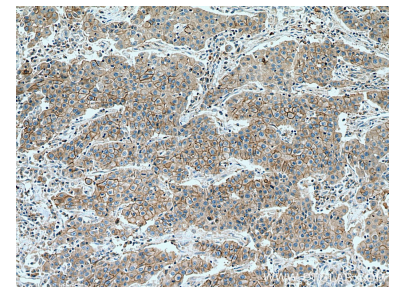
Selected Validation Data



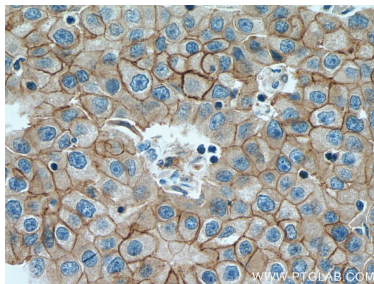
Various lysates were subjected to SDS PAGE followed by western blot with 67768-1-Ig (ALCAM antibody) at dilution of 1:10000 incubated at room temperature for 1.5 hours.



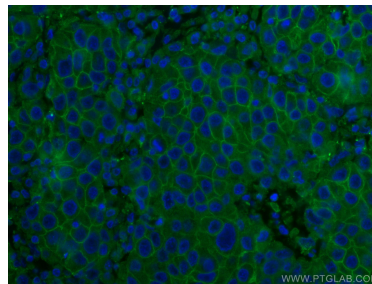
Immunofluorescent analysis of (4% PFA) fixed hTERT-RPE1 cells using ALCAM antibody (67768-1-Ig, Clone: 1F7D6) at dilution of 1:500 and Multi-rAb CoraLite® Plus 594-Goat Anti-Mouse Recombinant Secondary Antibody (H+L) (Cat.NO. RGAM004).



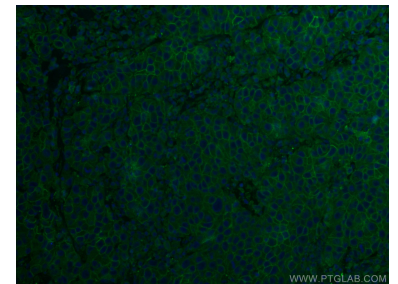
Immunohistochemical analysis of paraffin-embedded human breast cancer tissue slide using 67768-1-Ig (ALCAM antibody) at dilution of 1:1000 (under 10x lens). Heat mediated antigen retrieval with Tris-EDTA buffer (pH 9.0).



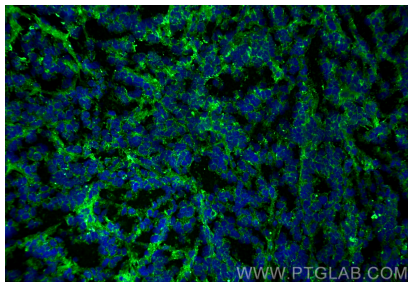
Immunohistochemical analysis of paraffin-embedded human breast cancer tissue slide using 67768-1-Ig (ALCAM antibody) at dilution of 1:1000 (under 40x lens). Heat mediated antigen retrieval with Tris-EDTA buffer (pH 9.0).



Immunofluorescent analysis of (4% PFA) fixed human breast cancer tissue using ALCAM antibody (67768-1-Ig, Clone: 1F7D6) at dilution of 1:400 and CoraLite® 488-Conjugated AffiniPure Goat Anti-Mouse IgG(H+L).



Immunofluorescent analysis of (4% PFA) fixed human breast cancer tissue using ALCAM antibody (67768-1-Ig, Clone: 1F7D6) at dilution of 1:400 and CoraLite® 488-Conjugated AffiniPure Goat Anti-Mouse IgG(H+L).



Immunofluorescent analysis of un-fixed frozen OCT-embedded mouse breast cancer using ALCAM antibody (67768-1-Ig, Clone: 1F7D6) at dilution of 1:400 and CoraLite® 488-Conjugated Goat Anti-Mouse IgG(H+L) (SA00013-1).