

For Research Use Only

# CLIP-115/CLIP2 Monoclonal antibody



Catalog Number: 67776-1-Ig

## Basic Information

|  |   |   |
|--|---|---|
| <b>Catalog Number:</b><br>67776-1-Ig                               | <b>GenBank Accession Number:</b><br>BC150332                    | <b>Purification Method:</b><br>Protein G purification |
| <b>Size:</b><br>150UL, Concentration: 1000 µg/ml by 7461 Nanodrop; | <b>GeneID (NCBI):</b><br>7461                                   | <b>CloneNo.:</b><br>2E6B6                             |
| <b>Source:</b><br>Mouse  | <b>Full Name:</b><br>CAP-GLY domain containing linker protein 2 | <b>Recommended Dilutions:</b><br>WB 1:2000-1:20000    |
| <b>Isotype:</b><br>IgG1  | <b>Calculated MW:</b><br>1011 aa, 112 kDa                       |   |
| <b>Immunogen Catalog Number:</b><br>AG18902                        | <b>Observed MW:</b><br>120 kDa                                  |   |

## Applications

**Tested Applications:**  
WB, ELISA

**Species Specificity:**  
Human, mouse, rat, pig, rabbit

**Positive Controls:**  
WB: mouse cerebellum tissue, pig cerebellum tissue, rat cerebellum tissue, mouse brain tissue, pig brain tissue, rabbit brain tissue, rat brain tissue

## Background Information

CLIP-2/CLIP-115 is a cytoplasmic linker protein (CLIP) that links membranous organelles to microtubules. CLIP-115 is enriched in the axonal growth cone and it enables neuronal polarization by controlling the stabilization of microtubules. Mutation of CLIP-115 has been associated with Williams-Beuren syndrome.

## Storage

**Storage:**  
Store at -20°C.

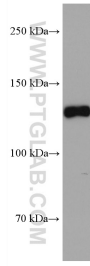
**Storage Buffer:**  
PBS with 0.1% sodium azide and 50% glycerol pH 7.3.

Aliquoting is unnecessary for -20°C storage

For technical support and original validation data for this product please contact:  
T: 1 (888) 4PTGLAB (1-888-478-4522) (toll free in USA), or 1(312) 455-8498 (outside USA)      E: proteintech@ptglab.com      W: ptglab.com

This product is exclusively available under Proteintech Group brand and is not available to purchase from any other manufacturer.

## Selected Validation Data



mouse cerebellum tissue were subjected to SDS PAGE followed by western blot with 67776-1-Ig (CLIP2 antibody) at dilution of 1:10000 incubated at room temperature for 1.5 hours.