

For Research Use Only

PPP2R2A/B/C Monoclonal antibody

Catalog Number: 67783-1-Ig 1 Publications



Basic Information

Catalog Number: 67783-1-Ig	GenBank Accession Number: BC031790	Purification Method: Protein G purification
Size: 150ul , Concentration: 1000 ug/ml by Nanodrop and 513 ug/ml by Bradford method using BSA as the standard;	GeneID (NCBI): 5521	CloneNo.: 2E1D5
Source: Mouse	UNIPROT ID: Q00005	Recommended Dilutions: WB: 1:1000-1:6000 IHC: 1:50-1:500 IF/ICC: 1:200-1:800
Isotype: IgG1	Full Name: protein phosphatase 2 (formerly 2A), regulatory subunit B, beta isoform	
Immunogen Catalog Number: AG30774	Calculated MW: 443 aa, 52 kDa	
	Observed MW: 52 kDa	

Applications

Tested Applications: WB, IHC, IF/ICC, ELISA	Positive Controls: WB : HepG2 cells, pig brain tissue, LNCaP cells, HeLa cells, Jurkat cells, K-562 cells, rabbit brain tissue, rat brain tissue, mouse brain tissue
Cited Applications: WB	IHC : mouse brain tissue, mouse cerebellum tissue
Species Specificity: human, mouse, rat, pig, rabbit	IF/ICC : SH-SY5Y cells,
Cited Species: human	
Note-IHC: suggested antigen retrieval with TE buffer pH 9.0; (*) Alternatively, antigen retrieval may be performed with citrate buffer pH 6.0	

Background Information

The PPP2R2B gene encodes a deduced 443 amino acid protein of approximately 52 kDa, which is a brain-specific regulatory subunit B of protein phosphatase 2. PPP2R2B is a Subunit of PP2A, a highly conserved constitutive enzyme(PMID:11719278). PPP2R2B (Bβ) is an important regulator of protein phosphatase 2A (PP2A) activity in the brain. Through differential promoter usage and alternative splicing, two major isoforms Bβ1 and Bβ2 with divergent sub-cellular targeting N termini are produced. Bβ plays an important role in neuronal survival. It has 5 isoforms produced by alternative splicing. This antibody can recognize PPP2R2A and PPP2R2C due to the immunogen of PPP2R2B having high homology with PPP2R2A and PPP2R2C.

Notable Publications

Author	Pubmed ID	Journal	Application
Jiao Li	35441157	MedComm (2020)	WB

Storage

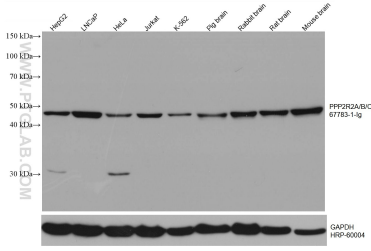
Storage:
Store at -20°C. Stable for one year after shipment.
Storage Buffer:
PBS with 0.02% sodium azide and 50% glycerol, pH7.3
Aliquoting is unnecessary for -20°C storage

*** 20ul sizes contain 0.1% BSA

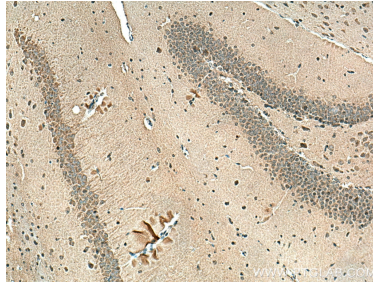
For technical support and original validation data for this product please contact:
T: 1 (888) 4PTGLAB (1-888-478-4522) (toll free in USA), or 1(312) 455-8498 (outside USA)
E: proteintech@ptglab.com
W: ptglab.com

This product is exclusively available under Proteintech Group brand and is not available to purchase from any other manufacturer.

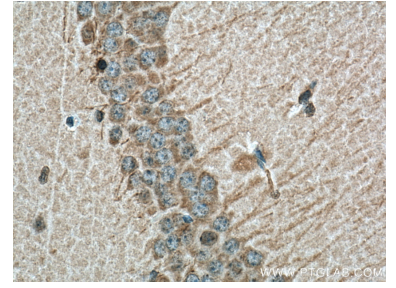
Selected Validation Data



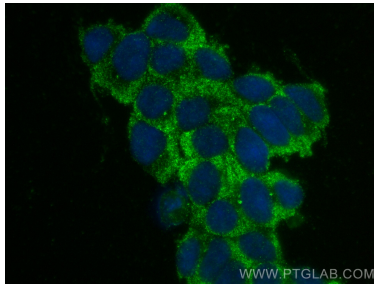
Various lysates were subjected to SDS PAGE followed by western blot with 67783-1 Ig (PPP2R2A/B/C antibody) at dilution of 1:3000 incubated at room temperature for 1.5 hours. The membrane was stripped and rebotted with HRP-conjugated GAPDH Monoclonal antibody (HRP-60004) as loading control.



Immunohistochemical analysis of paraffin-embedded mouse brain tissue slide using 67783-1-Ig (PPP2R2A/B/C antibody) at dilution of 1:200 (under 10x lens). Heat mediated antigen retrieval with Tris-EDTA buffer (pH 9.0).



Immunohistochemical analysis of paraffin-embedded mouse brain tissue slide using 67783-1-Ig (PP2R2A/B/C antibody) at dilution of 1:200 (under 40x lens). Heat mediated antigen retrieval with Tris-EDTA buffer (pH 9.0).



Immunofluorescent analysis of (-20°C Ethanol) fixed SH-SY5Y cells using PPP2R2A/B/C antibody (67783-1-Ig, Clone: 2E1D5) at dilution of 1:400 and CoraLite® 488-Conjugated Goat Anti-Mouse IgG(H+L) (SA00013-1).