

For Research Use Only

CBS Monoclonal antibody

Catalog Number: 67861-1-Ig

Featured Product

4 Publications



Basic Information

Catalog Number:

67861-1-Ig

Size:

150ul, Concentration: 1000 ug/ml by Nanodrop;

Source:

Mouse

Isotype:

IgG2b

Immunogen Catalog Number:

AG7008

GenBank Accession Number:

BC000440

GeneID (NCBI):

875

UNIPROT ID:

P35520

Full Name:

cystathionine-beta-synthase

Calculated MW:

61 kDa

Observed MW:

61-63 kDa

Purification Method:

Protein A purification

CloneNo.:

1E4F10

Recommended Dilutions:

WB: 1:5000-1:50000

IHC: 1:500-1:2000

IF/ICC: 1:400-1:1600

Applications

Tested Applications:

WB, IHC, IF/ICC, ELISA

Cited Applications:

WB

Species Specificity:

human, rat

Cited Species:

mouse, rat

Note-IHC: suggested antigen retrieval with TE buffer pH 9.0; (*) Alternatively, antigen retrieval may be performed with citrate buffer pH 6.0

Positive Controls:

WB: LNCaP cells, HEK-293 cells, Jurkat cells, K-562 cells, NCI-H1299 cells, HeLa cells, THP-1 cells

IHC: human pancreas cancer tissue,

IF/ICC: HeLa cells,

Background Information

The CBS gene encodes cystathionine beta-synthase, which catalyzes the first irreversible step of transsulfuration. The CBS enzyme is a homotetramer of 63-kD subunits and requires pyridoxal phosphate and heme for activity(PMID:11230183). CBS protein is localized in most areas of the brain, but predominantly in the cell bodies and neuronal processes of Purkinje cells and Ammon's horn neurons(PMID:12588964).

Notable Publications

Author	Pubmed ID	Journal	Application
Jiexian Du	35483194	Biomed Pharmacother	WB
Xue-Xue Zhu	40055697	J Nanobiotechnology	WB
Hongyue Zheng	40025024	Nat Commun	

Storage

Storage:

Store at -20°C. Stable for one year after shipment.

Storage Buffer:

PBS with 0.02% sodium azide and 50% glycerol, pH7.3

Aliquoting is unnecessary for -20°C storage

*** 20ul sizes contain 0.1% BSA

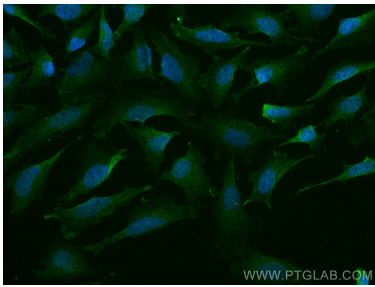
For technical support and original validation data for this product please contact:

T: 1 (888) 4PTGLAB (1-888-478-4522) (toll free in USA), or 1(312) 455-8498 (outside USA)

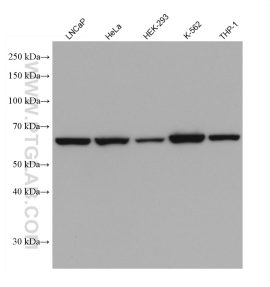
E: proteintech@ptglab.com
W: ptglab.com

This product is exclusively available under Proteintech Group brand and is not available to purchase from any other manufacturer.

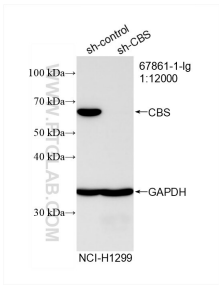
Selected Validation Data



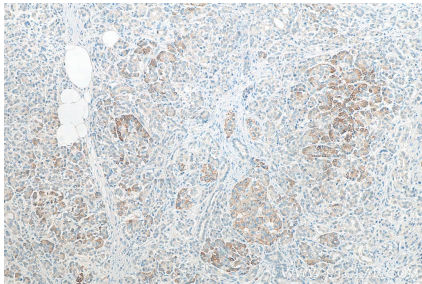
Immunofluorescent analysis of (4% PFA) fixed HeLa cells using CBS antibody (67861-1-Ig, Clone: 1E4F10) at dilution of 1:800 and CoraLite®488-Conjugated AffiniPure Goat Anti-Mouse IgG(H+L).



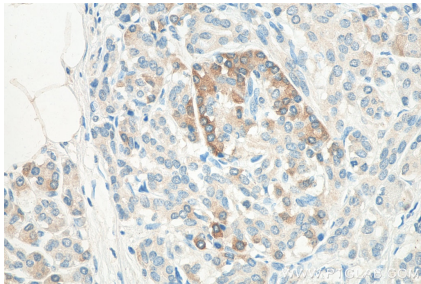
Various lysates were subjected to SDS PAGE followed by western blot with 67861-1-Ig (CBS antibody) at dilution of 1:20000 incubated at room temperature for 1.5 hours.



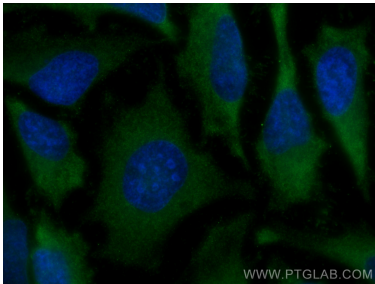
WB result of CBS antibody (67861-1-Ig; 1:12000; incubated at room temperature for 1.5 hours) with sh-Control and sh-CBS transfected NCI-H1299 cells.



Immunohistochemical analysis of paraffin-embedded human pancreas cancer tissue slide using 67861-1-Ig (CBS antibody) at dilution of 1:1000 (under 10x lens). Heat mediated antigen retrieval with Tris-EDTA buffer (pH 9.0).



Immunohistochemical analysis of paraffin-embedded human pancreas cancer tissue slide using 67861-1-Ig (CBS antibody) at dilution of 1:1000 (under 40x lens). Heat mediated antigen retrieval with Tris-EDTA buffer (pH 9.0).



Immunofluorescent analysis of (-20°C Methanol) fixed HeLa cells using CBS antibody (67861-1-Ig, Clone: 1E4F10) at dilution of 1:800 and CoraLite®488-Conjugated AffiniPure Goat Anti-Mouse IgG(H+L).