

For Research Use Only

# WDR1 Monoclonal antibody

Catalog Number: 67937-1-Ig



## Basic Information

<b>Catalog Number:</b> 67937-1-Ig	<b>GenBank Accession Number:</b> BC030541	<b>Purification Method:</b> Protein G purification
<b>Size:</b> 150ul , Concentration: 1000 µg/ml by Nanodrop;	<b>GeneID (NCBI):</b> 9948	<b>CloneNo.:</b> 2D11E1
<b>Source:</b> Mouse	<b>Full Name:</b> WD repeat domain 1	<b>Recommended Dilutions:</b> WB 1:5000-1:50000
<b>Isotype:</b> IgG1	<b>Calculated MW:</b> 606 aa, 66 kDa	
<b>Immunogen Catalog Number:</b> AG30967	<b>Observed MW:</b> 65-66 kDa	

## Applications

<b>Tested Applications:</b> WB, ELISA	<b>Positive Controls:</b> WB : A549 cells, rat testis tissue, U-87 cells, HEK-293 cells
<b>Species Specificity:</b> Human	

## Background Information

### Storage

**Storage:**  
Store at -20°C.  
**Storage Buffer:**  
PBS with 0.02% sodium azide and 50% glycerol pH 7.3.  
Aliquoting is unnecessary for -20°C storage

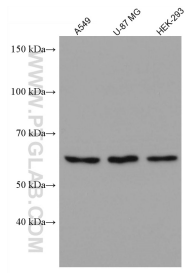
For technical support and original validation data for this product please contact:

T: 1 (888) 4PTGLAB (1-888-478-4522) (toll free in USA), or 1(312) 455-8498 (outside USA)

E: [proteintech@ptglab.com](mailto:proteintech@ptglab.com)  
W: [ptglab.com](http://ptglab.com)

This product is exclusively available under Proteintech Group brand and is not available to purchase from any other manufacturer.

## Selected Validation Data



Various lysates were subjected to SDS PAGE followed by western blot with 67937-1-Ig (WDR1 antibody) at dilution of 1:10000 incubated at room temperature for 1.5 hours.