

For Research Use Only

# FATP2 Monoclonal antibody

Catalog Number: 68074-1-Ig



## Basic Information

<b>Catalog Number:</b> 68074-1-Ig	<b>GenBank Accession Number:</b> BC057770	<b>Purification Method:</b> Protein A purification
<b>Size:</b> 150ul , Concentration: 1000 ug/ml by Nanodrop;	<b>GeneID (NCBI):</b> 11001	<b>CloneNo.:</b> 2C10D7
<b>Source:</b> Mouse	<b>UNIPROT ID:</b> O14975	<b>Recommended Dilutions:</b> WB 1:5000-1:50000 IHC 1:250-1:1000 IF/ICC 1:500-1:2000
<b>Isotype:</b> IgG1	<b>Full Name:</b> solute carrier family 27 (fatty acid transporter), member 2	
<b>Immunogen Catalog Number:</b> AG5390	<b>Calculated MW:</b> 567 aa, 65 kDa	
	<b>Observed MW:</b> 70 kDa	

## Applications

<b>Tested Applications:</b> WB, IHC, IF/ICC, ELISA	<b>Positive Controls:</b>
<b>Species Specificity:</b> human, rat	<b>WB :</b> A549 cells, HepG2 cells, rat liver tissue, LNCaP cells, HeLa cells
<b>Note-IHC: suggested antigen retrieval with TE buffer pH 9.0; (*) Alternatively, antigen retrieval may be performed with citrate buffer pH 6.0</b>	<b>IHC :</b> human kidney tissue,
	<b>IF/ICC :</b> HepG2 cells,

## Background Information

FATP2 is a member of the FATP family which functions in lipid and bile metabolism. It is a 70-kDa protein predominantly expressed in liver and kidney. Kidney FATP2 is localized exclusively to proximal tubule epithelial cells along the apical but not the basolateral membrane, and regulates lipoapoptosis. FATP2 is involved in metabolism-related diseases including nonalcoholic fatty liver disease (NAFLD) and type 2 diabetes mellitus (T2DM), and is a potential clinical biomarker and therapeutic target.

## Storage

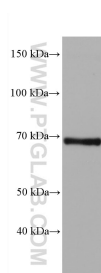
**Storage:**  
Store at -20°C. Stable for one year after shipment.  
**Storage Buffer:**  
PBS with 0.02% sodium azide and 50% glycerol pH 7.3.  
**Aliquoting is unnecessary for -20°C storage**

\*\*\* 20ul sizes contain 0.1% BSA

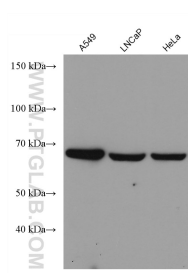
For technical support and original validation data for this product please contact:  
T: 1 (888) 4PTGLAB (1-888-478-4522) (toll free in USA), or 1(312) 455-8498 (outside USA)  
E: [proteintech@ptglab.com](mailto:proteintech@ptglab.com)  
W: [ptglab.com](http://ptglab.com)

This product is exclusively available under Proteintech Group brand and is not available to purchase from any other manufacturer.

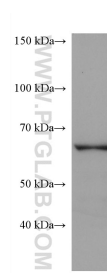
## Selected Validation Data



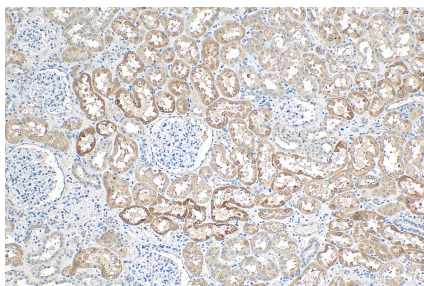
rat liver tissue were subjected to SDS PAGE followed by western blot with 68074-1-Ig (FATP2 antibody) at dilution of 1:1000 incubated at room temperature for 1.5 hours.



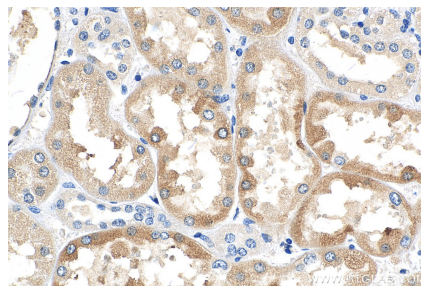
Various lysates were subjected to SDS PAGE followed by western blot with 68074-1-Ig (SLC27A2 antibody) at dilution of 1:10000 incubated at room temperature for 1.5 hours.



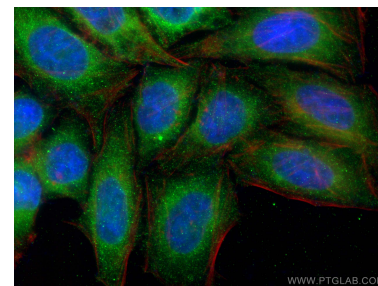
HepG2 cells were subjected to SDS PAGE followed by western blot with 68074-1-Ig (SLC27A2 antibody) at dilution of 1:10000 incubated at room temperature for 1.5 hours.



Immunohistochemical analysis of paraffin-embedded human kidney tissue slide using 68074-1-Ig (FATP2 antibody) at dilution of 1:500 (under 10x lens). Heat mediated antigen retrieval with Tris-EDTA buffer (pH 9.0).



Immunohistochemical analysis of paraffin-embedded human kidney tissue slide using 68074-1-Ig (FATP2 antibody) at dilution of 1:500 (under 40x lens). Heat mediated antigen retrieval with Tris-EDTA buffer (pH 9.0).



Immunofluorescent analysis of (4% PFA) fixed HepG2 cells using FATP2 antibody (68074-1-Ig, Clone: 2C10D7 ) at dilution of 1:1000 and CoraLite®488-Conjugated AffiniPure Goat Anti-Mouse IgG(H+L) (SA00013-1), CL594-phalloidin (red).