

For Research Use Only

# Dystrophin Monoclonal antibody

Catalog Number: 68120-1-Ig **2 Publications**



## Basic Information

<b>Catalog Number:</b> 68120-1-Ig	<b>GenBank Accession Number:</b> BC028720	<b>Purification Method:</b> Protein A purification
<b>Size:</b> 150ul , Concentration: 1000 ug/ml by Nanodrop;	<b>GeneID (NCBI):</b> 1756	<b>CloneNo.:</b> 1G12E6
<b>Source:</b> Mouse	<b>UNIPROT ID:</b> P11532	<b>Recommended Dilutions:</b> WB: 1:5000-1:50000 IHC: 1:1000-1:4000 IF-P: 1:200-1:800 FC (Intra): 0.40 ug per 10 <sup>6</sup> cells in a 100 µl suspension
<b>Isotype:</b> IgG2a	<b>Full Name:</b> dystrophin	
<b>Immunogen Catalog Number:</b> AG4392	<b>Calculated MW:</b> 3685 aa, 427 kDa	
	<b>Observed MW:</b> 70 kDa, 430 kDa	

## Applications

<b>Tested Applications:</b> WB, IHC, IF-P, FC (Intra), ELISA	<b>Positive Controls:</b> <b>WB :</b> rat brain tissue, HeLa cells, rat heart tissue, HepG2 cells, mouse brain tissue <b>IHC :</b> rat skeletal muscle tissue, mouse skeletal muscle tissue <b>IF-P :</b> mouse skeletal muscle tissue, rat heart tissue <b>FC (Intra) :</b> HepG2 cells,
<b>Cited Applications:</b> WB, IHC, IF	
<b>Species Specificity:</b> human, mouse, rat	
<b>Cited Species:</b> human	
<b>Note-IHC: suggested antigen retrieval with TE buffer pH 9.0; (*) Alternatively, antigen retrieval may be performed with citrate buffer pH 6.0</b>	

## Background Information

Dystrophin (DMD or BMD) is a large muscle protein whose mutations cause Duchenne muscular dystrophy (DMD) and Becker muscular dystrophy (BMD), the childhood neuromuscular disorders that result in progressive muscle weakness, respiratory difficulties and cardiovascular dysfunction. Dystrophin is a crucial component of the dystrophin-glycoprotein complex which is essential for muscle membrane integrity and stability. Dystrophin is located on the cytoplasmic face of the sarcolemma and connects the cytoskeletal network to the sarcolemma and extracellular matrix. Multiple isoforms of dystrophin exist due to the alternative splicing, with a wide range of MW (69-72, 110-143, 271, 426 kDa). Most tissues contain transcripts of several isoforms.

## Notable Publications

Author	Pubmed ID	Journal	Application
Lara Falcucci	39939773	Nature	WB
Wen-Zhe Li	39649544	World J Gastroenterol	WB,IHC,IF

## Storage

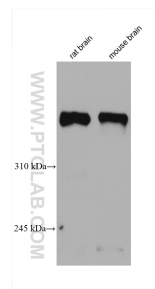
**Storage:**  
Store at -20°C. Stable for one year after shipment.  
**Storage Buffer:**  
PBS with 0.02% sodium azide and 50% glycerol, pH7.3  
**Aliquoting is unnecessary for -20°C storage**

\*\*\* 20ul sizes contain 0.1% BSA

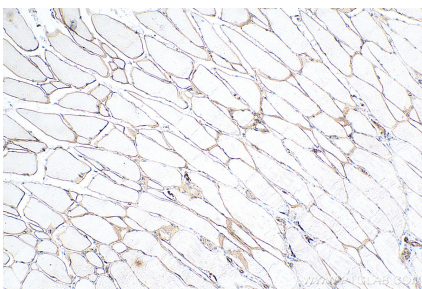
For technical support and original validation data for this product please contact:  
T: 1 (888) 4PTGLAB (1-888-478-4522) (toll free in USA), or 1(312) 455-8498 (outside USA)  
E: proteintech@ptglab.com  
W: ptglab.com

This product is exclusively available under Proteintech Group brand and is not available to purchase from any other manufacturer.

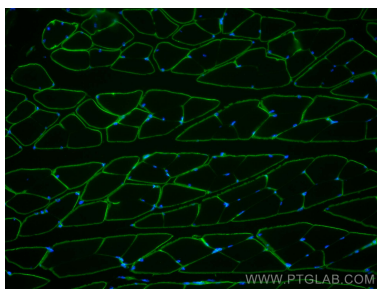
Selected Validation Data



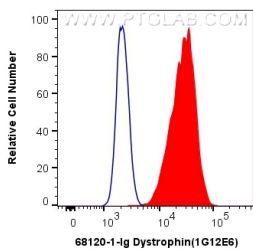
Various lysates were subjected to SDS PAGE followed by western blot with 68120-1-Ig (Dystrophin antibody) at dilution of 1:10000 incubated at room temperature for 1.5 hours.



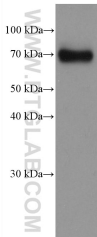
Immunohistochemical analysis of paraffin-embedded rat skeletal muscle tissue slide using 68120-1-Ig (Dystrophin antibody) at dilution of 1:2000 (under 10x lens). Heat mediated antigen retrieval with Tris-EDTA buffer (pH 9.0).



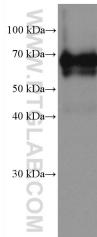
Immunofluorescent analysis of (4% PFA) fixed mouse skeletal muscle tissue using Dystrophin antibody (68120-1-Ig, Clone: 1G12E6 ) at dilution of 1:400 and CoraLite®488-Conjugated AffiniPure Goat Anti-Mouse IgG(H+L).



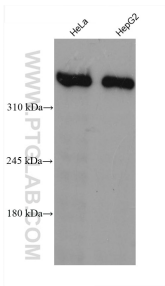
1X10<sup>6</sup> HepG2 cells were intracellularly stained with 0.4 ug Anti-Human Dystrophin (68120-1-Ig, Clone:1G12E6) and CoraLite®488-Conjugated AffiniPure Goat Anti-Mouse IgG(H+L) at dilution 1:1000 (red), or 0.4 ug Mouse IgG2a Isotype Control (C1.18.4) (65208-1-Ig, Clone: C1.18.4) (blue). Cells were fixed with 4% PFA and permeabilized with Flow Cytometry Perm Buffer (PF00011-C).



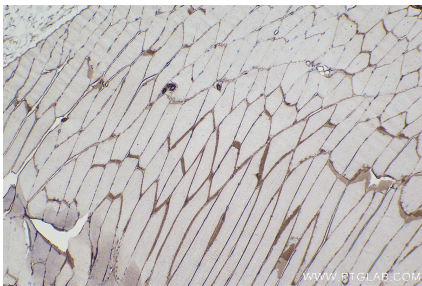
HeLa cells were subjected to SDS PAGE followed by western blot with 68120-1-Ig (Dystrophin antibody) at dilution of 1:10000 incubated at room temperature for 1.5 hours.



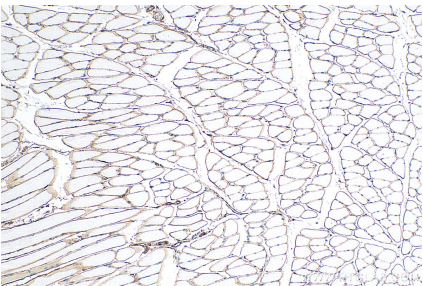
rat heart tissue were subjected to SDS PAGE followed by western blot with 68120-1-Ig (Dystrophin antibody) at dilution of 1:10000 incubated at room temperature for 1.5 hours.



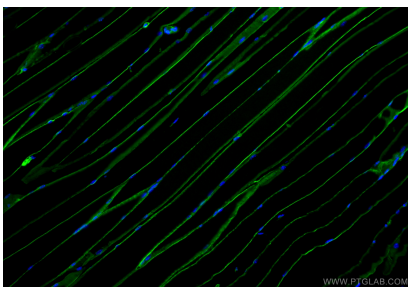
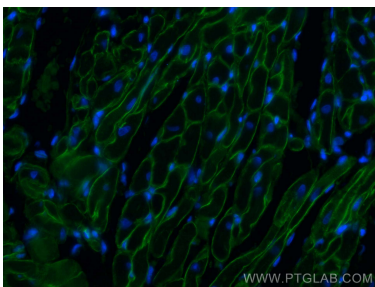
Various lysates were subjected to SDS PAGE followed by western blot with 68120-1-Ig (DMD antibody) at dilution of 1:10000 incubated at room temperature for 1.5 hours.



Immunohistochemical analysis of paraffin-embedded mouse skeletal muscle tissue slide using 68120-1-Ig (Dystrophin antibody) at dilution of 1:2000 (under 10x lens). Heat mediated antigen retrieval with Tris-EDTA buffer (pH 9.0).



Immunohistochemical analysis of paraffin-embedded mouse skeletal muscle tissue slide using 68120-1-Ig (Dystrophin antibody) at dilution of 1:2000 (under 10x lens). Heat mediated antigen retrieval with Tris-EDTA buffer (pH 9.0).



Immunofluorescent analysis of (4% PFA) fixed rat heart tissue using Dystrophin antibody (68120-1-Ig, Clone: 1G12E6 ) at dilution of 1:400 and CoraLite®488-Conjugated AffiniPure Goat Anti-Mouse IgG(H+L).

Immunofluorescent analysis of (4% PFA) fixed paraffin-embedded mouse skeletal muscle tissue using Dystrophin antibody (68120-1-Ig, Clone: 1G12E6 ) at dilution of 1:400 and CoraLite®488-Conjugated Goat Anti-Mouse IgG(H+L) (SA00013-1). Heat mediated antigen retrieval with Tris-EDTA buffer (pH 9.0).