

For Research Use Only

# LANCL1 Monoclonal antibody

Catalog Number: 68160-1-Ig



## Basic Information

Catalog Number:

68160-1-Ig

Size:

150ul, Concentration: 1000 ug/ml by  
Nanodrop;

Source:

Mouse

Isotype:

IgG1

Immunogen Catalog Number:

AG32665

GenBank Accession Number:

BC028685

GeneID (NCBI):

10314

UNIPROT ID:

O43813

Full Name:

LanC lantibiotic synthetase  
component C-like 1 (bacterial)

Calculated MW:

399 aa, 45 kDa

Observed MW:

40 kDa

Purification Method:

Protein G purification

CloneNo.:

2H6E8

Recommended Dilutions:

WB 1:5000-1:50000

IP 0.5-4.0 ug for 1.0-3.0 mg of total  
protein lysate

IF/ICC 1:400-1:1600

## Applications

Tested Applications:

WB, IF/ICC, IP, ELISA

Species Specificity:

Human, mouse, rat, pig

Positive Controls:

WB : HeLa cells, HepG2 cells, K-562 cells, HSC-T6 cells,  
NIH/3T3 cells, pig brain tissue, rabbit brain tissue, rat  
brain tissue, mouse brain tissue

IP : mouse brain tissue,

IF/ICC : U-251 cells,

## Background Information

LanCL1 (also known as P40 or GRP69A), is homologous to bacterial lanthionine synthetase C (LanC) family, which is involved in the biosynthesis of antimicrobial peptides (lantibiotics). LanCL1 was identified as a reduced glutathione (GSH)-binding protein and primarily expressed in neural tissues and testis.

## Storage

Storage:

Store at -20°C. Stable for one year after shipment.

Storage Buffer:

PBS with 0.02% sodium azide and 50% glycerol pH 7.3.

Aliquoting is unnecessary for -20°C storage

\*\*\* 20ul sizes contain 0.1% BSA

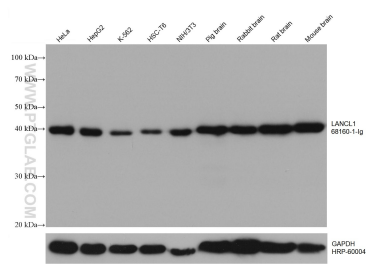
For technical support and original validation data for this product please contact:

T: 1 (888) 4PTGLAB (1-888-478-4522) (toll free  
in USA), or 1(312) 455-8498 (outside USA)

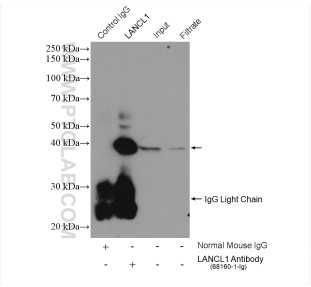
E: [proteintech@ptglab.com](mailto:proteintech@ptglab.com)  
W: [ptglab.com](http://ptglab.com)

This product is exclusively available under Proteintech Group brand and is not available to purchase from any other manufacturer.

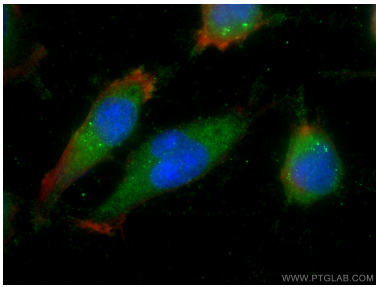
Selected Validation Data



Various lysates were subjected to SDS PAGE followed by western blot with 68160-1-Ig (LANCL1 antibody) at dilution of 1:10000 incubated at room temperature for 1.5 hours. The membrane was stripped and reblotted with HRP-conjugated GAPDH Monoclonal antibody (HRP-60004) as loading control.



IP result of anti-LANCL1 (IP:68160-1-Ig, 5ug; Detection:68160-1-Ig 1:2000) with mouse brain tissue lysate 1600 ug.



Immunofluorescent analysis of (-20°C Ethanol) fixed U-251 cells using LANCL1 antibody (68160-1-Ig, Clone: 2H6E8 ) at dilution of 1:800 and CoraLite®488-Conjugated Goat Anti-Mouse IgG(H+L), CL594-Phalloidin (red).