

For Research Use Only

# FH Monoclonal antibody

Catalog Number: 68162-1-Ig

Featured Product



## Basic Information

Catalog Number:

68162-1-Ig

Size:

150ul, Concentration: 1000 ug/ml by Nanodrop;

Source:

Mouse

Isotype:

IgG2b

Immunogen Catalog Number:

AG30254

GenBank Accession Number:

BC003108

GeneID (NCBI):

2271

UNIPROT ID:

P07954

Full Name:

fumarate hydratase

Calculated MW:

510 aa, 55 kDa

Observed MW:

45-50 kDa

Purification Method:

Protein A purification

CloneNo.:

1A9C8

Recommended Dilutions:

WB 1:5000-1:50000

IHC 1:500-1:2000

## Applications

Tested Applications:

WB, IHC, ELISA

Species Specificity:

human, mouse, rat, pig, rabbit

**Note-IHC: suggested antigen retrieval with TE buffer pH 9.0; (\*) Alternatively, antigen retrieval may be performed with citrate buffer pH 6.0**

Positive Controls:

**WB** : A431 cells, HepG2 cells, LNCaP cells, HEK-293 cells, Jurkat cells, pig brain tissue, rabbit brain tissue, rat brain tissue, mouse brain tissue

**IHC** : human stomach cancer tissue, human placenta tissue, mouse cerebellum tissue

## Background Information

Fumarate hydratase, or fumarase, is an enzymatic component of the tricarboxylic acid cycle, catalyzing the conversion of fumarate to malate. It belongs to the class-II fumarase/aspartase family. This protein has 2 isoforms produced by alternative initiation.

## Storage

Storage:

Store at -20°C. Stable for one year after shipment.

Storage Buffer:

PBS with 0.02% sodium azide and 50% glycerol pH 7.3.

Aliquoting is unnecessary for -20°C storage

\*\*\* 20ul sizes contain 0.1% BSA

For technical support and original validation data for this product please contact:

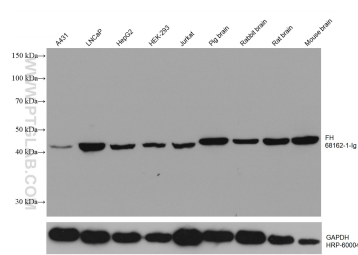
T: 1 (888) 4PTGLAB (1-888-478-4522) (toll free in USA), or 1(312) 455-8498 (outside USA)

E: [proteintech@ptglab.com](mailto:proteintech@ptglab.com)

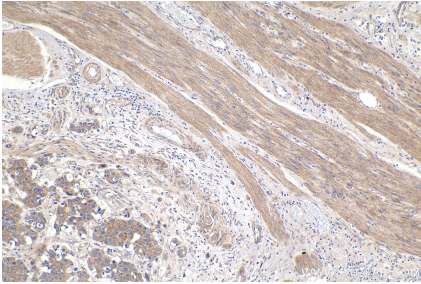
W: [ptglab.com](http://ptglab.com)

This product is exclusively available under Proteintech Group brand and is not available to purchase from any other manufacturer.

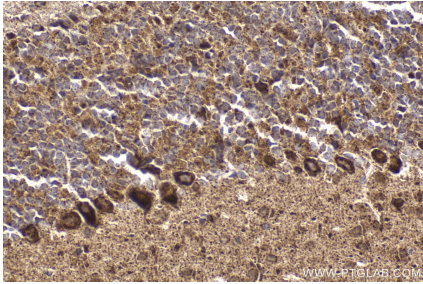
Selected Validation Data



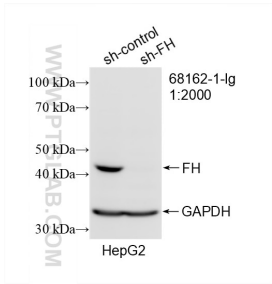
Various lysates were subjected to SDS PAGE followed by western blot with 68162-1-Ig (FH antibody) at dilution of 1:20000 incubated at room temperature for 1.5 hours. The membrane was stripped and reblotted with HRP-conjugated GAPDH Monoclonal antibody (HRP-60004) as loading control.



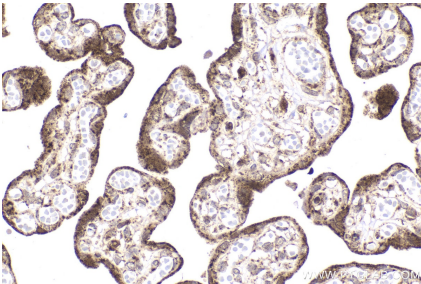
Immunohistochemical analysis of paraffin-embedded human stomach cancer tissue slide using 68162-1-Ig (FH antibody) at dilution of 1:1000 (under 10x lens). Heat mediated antigen retrieval with Tris-EDTA buffer (pH 9.0).



Immunohistochemical analysis of paraffin-embedded mouse cerebellum tissue slide using 68162-1-Ig (FH antibody) at dilution of 1:1000 (under 40x lens). Heat mediated antigen retrieval with Tris-EDTA buffer (pH 9.0).



WB result of FH antibody (68162-1-Ig; 1:2000; incubated at room temperature for 1.5 hours) with sh-Control and sh-FH transfected HepG2 cells.



Immunohistochemical analysis of paraffin-embedded human placenta tissue slide using 68162-1-Ig (FH antibody) at dilution of 1:1000 (under 40x lens). Heat mediated antigen retrieval with Tris-EDTA buffer (pH 9.0).