

For Research Use Only

TCEB1 Monoclonal antibody

Catalog Number: 68164-1-Ig **1 Publications**



Basic Information

Catalog Number: 68164-1-Ig	GenBank Accession Number: BC013809	Purification Method: Protein A purification
Size: 150ul , Concentration: 1000 ug/ml by Nanodrop;	GeneID (NCBI): 6921	CloneNo.: 2D6D8
Source: Mouse	UNIPROT ID: Q15369	Recommended Dilutions: WB 1:5000-1:50000 IF/ICC 1:400-1:1600
Isotype: IgG1	Full Name: transcription elongation factor B (SIII), polypeptide 1 (15kDa, elongin C)	
Immunogen Catalog Number: AG22601	Calculated MW: 112 aa, 12 kDa	
	Observed MW: 12 kDa	

Applications

Tested Applications: WB, IF/ICC, ELISA	Positive Controls: WB : LNCaP cells, HeLa cells, HEK-293 cells, Jurkat cells, K-562 cells, HSC-T6 cells, NIH/3T3 cells, rat brain tissue, mouse brain tissue
Cited Applications: WB	IF/ICC : T-47D cells,
Species Specificity: Human, mouse, rat	
Cited Species: human	

Background Information

TCEB1, also named as RNA polymerase II transcription factor SIII subunit C, belongs to the SKP1 family. It mediates the ubiquitination of ECS-E3 ubiquitin-protein ligase complexes. TCEB1 is overexpressed in prostate cancer cell line PC-3 and breast cancer cell line SK-BR-3. TCEB1 also promotes invasion of prostate cancer cells (PMID:18844214).

Notable Publications

Author	Pubmed ID	Journal	Application
Mingchao Mu	37816999	Cell Death Differ	WB

Storage

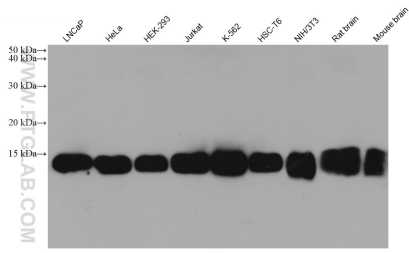
Storage:
Store at -20°C. Stable for one year after shipment.
Storage Buffer:
PBS with 0.02% sodium azide and 50% glycerol pH 7.3.
Aliquoting is unnecessary for -20°C storage

*** 20ul sizes contain 0.1% BSA

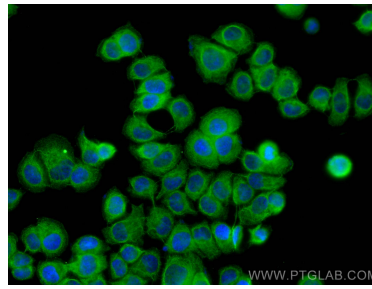
For technical support and original validation data for this product please contact:
T: 1 (888) 4PTGLAB (1-888-478-4522) (toll free in USA), or 1(312) 455-8498 (outside USA) E: proteintech@ptglab.com W: ptglab.com

This product is exclusively available under Proteintech Group brand and is not available to purchase from any other manufacturer.

Selected Validation Data



Various lysates were subjected to SDS PAGE followed by western blot with 68164-1-Ig (TCEB1 antibody) at dilution of 1:10000 incubated at room temperature for 1.5 hours.



Immunofluorescent analysis of (-20°C Methanol) fixed T-47D cells using TCEB1 antibody (68164-1-Ig, Clone: 2D6D8) at dilution of 1:800 and CoraLite®488-Conjugated Goat Anti-Mouse IgG(H+L).