

For Research Use Only

NIT2 Monoclonal antibody

Catalog Number: 68169-1-Ig **1 Publications**



Basic Information

Catalog Number: 68169-1-Ig	GenBank Accession Number: BC020620	Purification Method: Protein A purification
Size: 150ul , Concentration: 1000 ug/ml by Nanodrop;	GeneID (NCBI): 56954	CloneNo.: 1E5B1
Source: Mouse	UNIPROT ID: Q9NQR4	Recommended Dilutions: WB 1:5000-1:50000 IHC 1:200-1:800 IF/ICC 1:200-1:800
Isotype: IgG2b	Full Name: nitrilase family, member 2	
Immunogen Catalog Number: AG9889	Calculated MW: 276 aa, 31 kDa	
	Observed MW: 31 kDa	

Applications

Tested Applications: WB, IHC, IF/ICC, ELISA	Positive Controls:
Cited Applications: WB	WB : HEK-293 cells, HeLa cells, pig liver tissue, mouse liver tissue, HepG2 cells, Jurkat cells
Species Specificity: Human, mouse, rat, pig	IHC : human kidney tissue,
Cited Species: human	IF/ICC : U-251 cells,
Note-IHC: suggested antigen retrieval with TE buffer pH 9.0; (*) Alternatively, antigen retrieval may be performed with citrate buffer pH 6.0	

Background Information

NIT2 belongs to a branch of the nitrilase superfamily of enzymes that cleave carbon-nitrogen bonds. NIT2 functions as an omega-amidase and catalyzes hydrolysis of alpha-ketoglutaramate, forming alpha-ketoglutarate and ammonia. This reaction is also functionally coupled with a subset of transaminases that reaminate the keto acid analogs of some essential amino acids, most particularly methionine and phenylalanine.

Notable Publications

Author	Pubmed ID	Journal	Application
Huiwen Xu	39003419	Commun Biol	WB

Storage

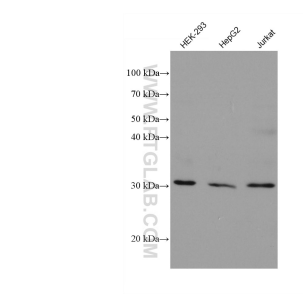
Storage:
Store at -20°C. Stable for one year after shipment.
Storage Buffer:
PBS with 0.02% sodium azide and 50% glycerol pH 7.3.
Aliquoting is unnecessary for -20°C storage

*** 20ul sizes contain 0.1% BSA

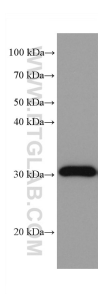
For technical support and original validation data for this product please contact:
T: 1 (888) 4PTGLAB (1-888-478-4522) (toll free in USA), or 1(312) 455-8498 (outside USA)
E: proteintech@ptglab.com
W: ptglab.com

This product is exclusively available under Proteintech Group brand and is not available to purchase from any other manufacturer.

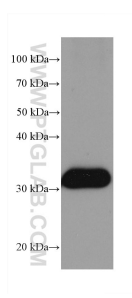
Selected Validation Data



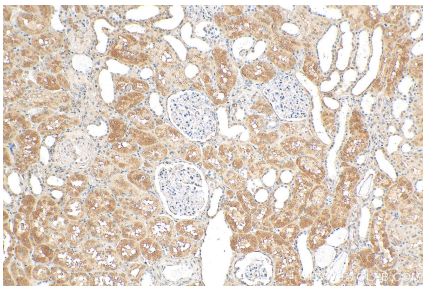
Various lysates were subjected to SDS PAGE followed by western blot with 68169-1-Ig (NIT2 antibody) at dilution of 1:20000 incubated at room temperature for 1.5 hours.



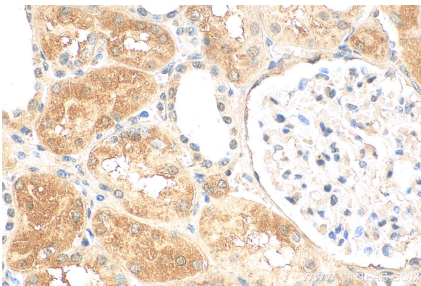
pig liver tissue were subjected to SDS PAGE followed by western blot with 68169-1-Ig (NIT2 antibody) at dilution of 1:20000 incubated at room temperature for 1.5 hours.



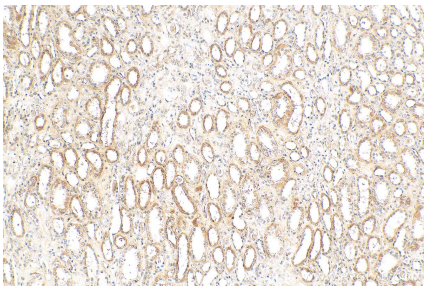
rat liver tissue were subjected to SDS PAGE followed by western blot with 68169-1-Ig (NIT2 antibody) at dilution of 1:20000 incubated at room temperature for 1.5 hours.



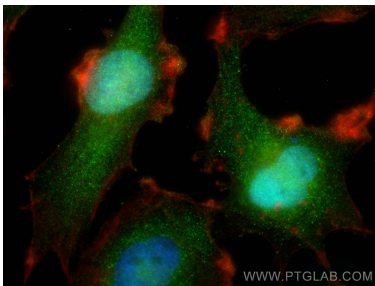
Immunohistochemical analysis of paraffin-embedded human kidney tissue slide using 68169-1-Ig (NIT2 antibody) at dilution of 1:400 (under 10x lens). Heat mediated antigen retrieval with Tris-EDTA buffer (pH 9.0).



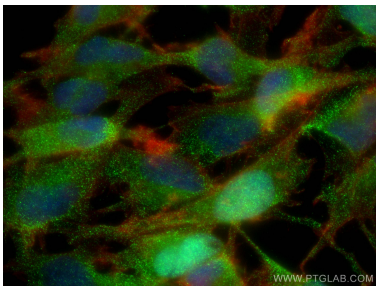
Immunohistochemical analysis of paraffin-embedded human kidney tissue slide using 68169-1-Ig (NIT2 antibody) at dilution of 1:400 (under 40x lens). Heat mediated antigen retrieval with Tris-EDTA buffer (pH 9.0).



Immunohistochemical analysis of paraffin-embedded human kidney tissue slide using 68169-1-Ig (NIT2 antibody) at dilution of 1:400 (under 10x lens). Heat mediated antigen retrieval with Tris-EDTA buffer (pH 9.0).



Immunofluorescent analysis of (4% PFA) fixed U-251 cells using NIT2 antibody (68169-1-Ig, Clone: 1E5B1) at dilution of 1:400 and CoraLite®488-Conjugated Goat Anti-Mouse IgG(H+L), CL594-Phalloidin (red).



Immunofluorescent analysis of (4% PFA) fixed U-251 cells using NIT2 antibody (68169-1-Ig, Clone: 1E5B1) at dilution of 1:400 and CoraLite®488-Conjugated Goat Anti-Mouse IgG(H+L), CL594-Phalloidin (red).