

For Research Use Only

GPD2 Monoclonal antibody

Catalog Number: 68174-1-Ig



Basic Information

Catalog Number: 68174-1-Ig	GenBank Accession Number: BC019874	Purification Method: Protein G purification
Size: 150ul , Concentration: 500 ug/ml by Nanodrop;	GeneID (NCBI): 2820	CloneNo.: 1C12E2
Source: Mouse	UNIPROT ID: P43304	Recommended Dilutions: WB 1:5000-1:50000
Isotype: IgG1	Full Name: glycerol-3-phosphate dehydrogenase 2 (mitochondrial)	
Immunogen Catalog Number: AG11212	Calculated MW: 41 kDa, 81 kDa	

Applications

Tested Applications: WB, ELISA	Positive Controls:
Species Specificity: Human, Rat, Mouse	WB : LNCaP cells, HSC-T6 cells, NIH/3T3 cells, HeLa cells, 4T1 cells

Background Information

GPD2(Glycerol-3-phosphate dehydrogenase, mitochondrial) belongs to the FAD-dependent glycerol-3-phosphate dehydrogenase family. It is phosphorylated only in capacitated hamster spermatozoa and is noncanonically localized in the acrosome and principal piece in human, mouse, rat, and hamster spermatozoa, though in somatic cells it is localized in the mitochondria. This noncanonical localization may imply a role of GPD2 in acrosome reaction and hyperactivation(PMID:19333995).

Storage

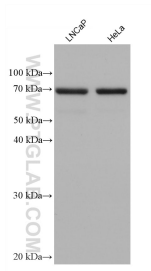
Storage:
Store at -20°C. Stable for one year after shipment.
Storage Buffer:
PBS with 0.02% sodium azide and 50% glycerol pH 7.3.
Aliquoting is unnecessary for -20°C storage

*** 20ul sizes contain 0.1% BSA

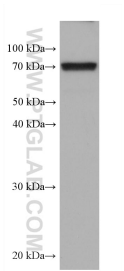
For technical support and original validation data for this product please contact:
T: 1 (888) 4PTGLAB (1-888-478-4522) (toll free in USA), or 1(312) 455-8498 (outside USA)
E: proteintech@ptglab.com
W: ptglab.com

This product is exclusively available under Proteintech Group brand and is not available to purchase from any other manufacturer.

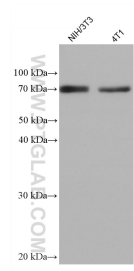
Selected Validation Data



Various lysates were subjected to SDS PAGE followed by western blot with 68174-1-Ig (GPD2 antibody) at dilution of 1:10000 incubated at room temperature for 1.5 hours.



HSC-T6 cells were subjected to SDS PAGE followed by western blot with 68174-1-Ig (GPD2 antibody) at dilution of 1:10000 incubated at room temperature for 1.5 hours.



Various lysates were subjected to SDS PAGE followed by western blot with 68174-1-Ig (GPD2 antibody) at dilution of 1:10000 incubated at room temperature for 1.5 hours.