

For Research Use Only

ARL8A/ARL8B Monoclonal antibody

Catalog Number: 68186-1-Ig



Basic Information

Catalog Number: 68186-1-Ig	GenBank Accession Number: BC015408	Purification Method: Protein A purification
Size: 150ul , Concentration: 1000 ug/ml by Nanodrop;	GeneID (NCBI): 127829	CloneNo.: 2F4C3
Source: Mouse	UNIPROT ID: Q96BM9	Recommended Dilutions: WB 1:5000-1:50000 IF/ICC 1:1000-1:4000
Isotype: IgG2a	Full Name: ADP-ribosylation factor-like 8A	
Immunogen Catalog Number: AG10758	Calculated MW: 186 aa, 21 kDa	
	Observed MW: 18 kDa, 21 kDa	

Applications

Tested Applications: WB, IF/ICC, ELISA	Positive Controls:
Species Specificity: human, mouse, rat, rabbit	WB : rabbit brain tissue, LNCaP cells, human placenta tissue, HeLa cells, rat brain tissue, mouse brain tissue
	IF/ICC : A549 cells, C6 cells, Neuro-2a cells, HEK-293 cells

Background Information

ARL8A (ADP-ribosylation factor-like protein 8A) is also named as ARL10B, GIE2 and belongs to the small GTPase superfamily. ARL8A is localized to lysosomes in mammalian cells (PMID: 16537643). In neurons, ARL8A mediates the anterograde axonal long-range transport of presynaptic lysosome-related vesicles that are required for presynaptic biogenesis and synaptic function. ARL8A is upregulated in many cancers such as endometrial cancer (PMID: 32070877), colorectal cancer (PMID: 30546056) and inflammatory breast cancer (PMID: 27648361), and has been associated with poor survival outcomes. ARL8A/ARL8B can be recognized by this antibody.

Storage

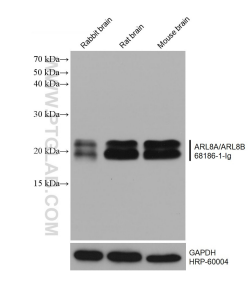
Storage:
Store at -20°C. Stable for one year after shipment.
Storage Buffer:
PBS with 0.02% sodium azide and 50% glycerol pH 7.3.
Aliquoting is unnecessary for -20°C storage

*** 20ul sizes contain 0.1% BSA

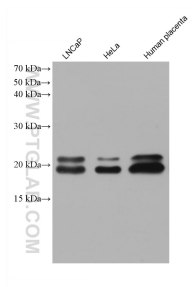
For technical support and original validation data for this product please contact:
T: 1 (888) 4PTGLAB (1-888-478-4522) (toll free in USA), or 1(312) 455-8498 (outside USA)
E: proteintech@ptglab.com
W: ptglab.com

This product is exclusively available under Proteintech Group brand and is not available to purchase from any other manufacturer.

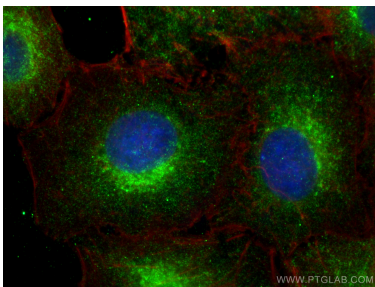
Selected Validation Data



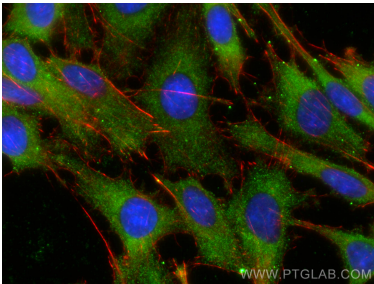
Various lysates were subjected to SDS PAGE followed by western blot with 68186-1-Ig (ARL8A/ARL8B antibody) at dilution of 1:20000 incubated at room temperature for 1.5 hours. The membrane was stripped and reblotted with HRP-conjugated GAPDH Monoclonal antibody (HRP-60004) as loading control.



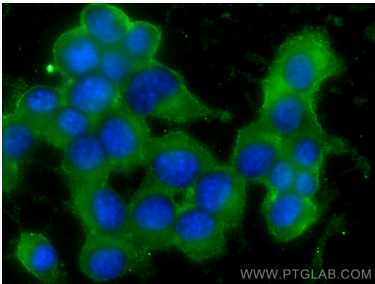
Various lysates were subjected to SDS PAGE followed by western blot with 68186-1-Ig (ARL8A/ARL8B antibody) at dilution of 1:20000 incubated at room temperature for 1.5 hours.



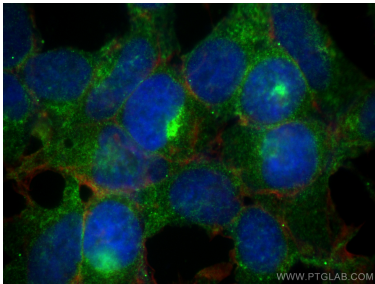
Immunofluorescent analysis of (4% PFA) fixed A549 cells using ARL8A/ARL8B antibody (68186-1-Ig, Clone: 2F4C3) at dilution of 1:2000 and Multi-rAb CoraLite® Plus 488-Goat Anti-Mouse Recombinant Secondary Antibody (H+L) (RGAM002), CL594-Phalloidin (red).



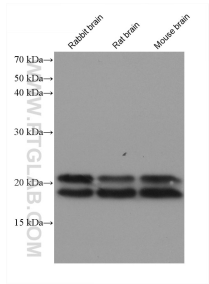
Immunofluorescent analysis of (-20°C Ethanol) fixed C6 cells using ARL8A/ARL8B antibody (68186-1-Ig, Clone: 2F4C3) at dilution of 1:800 and CoraLite® 488-Conjugated AffiniPure Goat Anti-Mouse IgG(H+L), CL594-Phalloidin (red).



Immunofluorescent analysis of (-20°C Ethanol) fixed Neuro-2a cells using ARL8A/ARL8B antibody (68186-1-Ig, Clone: 2F4C3) at dilution of 1:800 and CoraLite® 488-Conjugated AffiniPure Goat Anti-Mouse IgG(H+L).



Immunofluorescent analysis of (4% PFA) fixed HEK-293 cells using ARL8A/ARL8B antibody (68186-1-Ig, Clone: 2F4C3) at dilution of 1:2000 and Multi-rAb CoraLite® Plus 488-Goat Anti-Mouse Recombinant Secondary Antibody (H+L) (RGAM002), CL594-Phalloidin (red).



Various lysates were subjected to SDS PAGE followed by western blot with 68186-1-Ig (ARL8A antibody) at dilution of 1:10000 incubated at room temperature for 1.5 hours.