

For Research Use Only

# VPS25 Monoclonal antibody

Catalog Number: 68197-1-Ig



## Basic Information

<b>Catalog Number:</b> 68197-1-Ig	<b>GenBank Accession Number:</b> BC006282	<b>Purification Method:</b> Protein G purification
<b>Size:</b> 150ul , Concentration: 1000 ug/ml by Nanodrop;	<b>GeneID (NCBI):</b> 84313	<b>CloneNo.:</b> 3B4C3
<b>Source:</b> Mouse	<b>UNIPROT ID:</b> Q9BRG1	<b>Recommended Dilutions:</b> WB 1:5000-1:50000 IF/ICC 1:400-1:1600
<b>Isotype:</b> IgG1	<b>Full Name:</b> vacuolar protein sorting 25 homolog (S. cerevisiae)	
<b>Immunogen Catalog Number:</b> AG8243	<b>Calculated MW:</b> 176 aa, 21 kDa	
	<b>Observed MW:</b> 19 kDa	

## Applications

<b>Tested Applications:</b> WB, IF/ICC, ELISA	<b>Positive Controls:</b>
<b>Species Specificity:</b> Human, Rabbit	<b>WB :</b> HEK-293 cells, HeLa cells, rabbit kidney tissue, HepG2 cells, Jurkat cells
	<b>IF/ICC :</b> HepG2 cells,

## Background Information

VPS25 is a component of the endosome-associated complex ESCRT-II (Endosomal Sorting Complexes Required for Transport protein II). ESCRT-II complex, composed of VPS25, VPS36, and SNF8, functions in sorting of ubiquitinated membrane proteins during endocytosis. ESCRT-II complex is probably involved in the recruitment of the ESCRT-III complex. VPS25 is highly conserved. Human VPS25 gene maps to chromosome 17q21.31 and is expressed in a wide range of tissues (PMID: 16889659).

## Storage

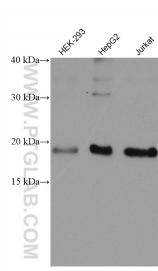
**Storage:**  
Store at -20°C. Stable for one year after shipment.  
**Storage Buffer:**  
PBS with 0.02% sodium azide and 50% glycerol pH 7.3.  
Aliquoting is unnecessary for -20°C storage

\*\*\* 20ul sizes contain 0.1% BSA

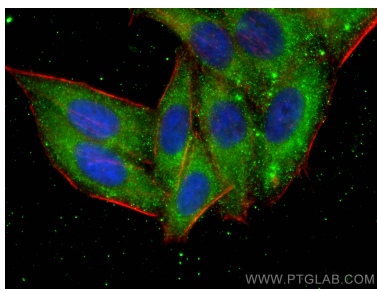
For technical support and original validation data for this product please contact:  
T: 1 (888) 4PTGLAB (1-888-478-4522) (toll free in USA), or 1(312) 455-8498 (outside USA)  
E: [proteintech@ptglab.com](mailto:proteintech@ptglab.com)  
W: [ptglab.com](http://ptglab.com)

This product is exclusively available under Proteintech Group brand and is not available to purchase from any other manufacturer.

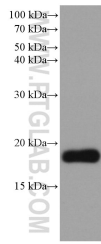
Selected Validation Data



Various lysates were subjected to SDS PAGE followed by western blot with 68197-1-Ig (VPS25 antibody) at dilution of 1:10000 incubated at room temperature for 1.5 hours.



Immunofluorescent analysis of (-20°C Ethanol) fixed HepG2 cells using VPS25 antibody (68197-1-Ig, Clone: 3B4C3 ) at dilution of 1:800 and CoraLite®488-Conjugated Goat Anti-Mouse IgG(H+L), CL594-Phalloidin (red).



rabbit kidney tissue were subjected to SDS PAGE followed by western blot with 68197-1-Ig (VPS25 antibody) at dilution of 1:5000 incubated at room temperature for 1.5 hours.