

For Research Use Only

RCL1 Monoclonal antibody

Catalog Number: 68221-1-Ig



Basic Information

Catalog Number: 68221-1-Ig	GenBank Accession Number: BC001025	Purification Method: Protein G purification
Size: 150ul , Concentration: 1000 ug/ml by Nanodrop;	GeneID (NCBI): 10171	CloneNo.: 1D1B3
Source: Mouse	UNIPROT ID: Q9Y2P8	Recommended Dilutions: WB 1:5000-1:50000
Isotype: IgG1	Full Name: RNA terminal phosphate cyclase-like 1	
Immunogen Catalog Number: AG7058	Calculated MW: 41 kDa	
	Observed MW: 41 kDa	

Applications

Tested Applications: WB, ELISA	Positive Controls:
Species Specificity: Human, Mouse, Rat	WB : MCF-7 cells, HeLa cells, HEK-293 cells, HepG2 cells, Jurkat cells, K-562 cells, HSC-T6 cells, NIH/3T3 cells

Background Information

RNA 3'-terminal phosphate cyclase-like protein (RCL1) does not have cyclase activity. It plays a role in 40S-ribosomal-subunit biogenesis in the early pre-rRNA processing steps at sites A0, A1 and A2 that are required for proper maturation of the 18S RNA. RCL1 has two isoforms with the molecular weight of 41 kDa and 20 kDa.

Storage

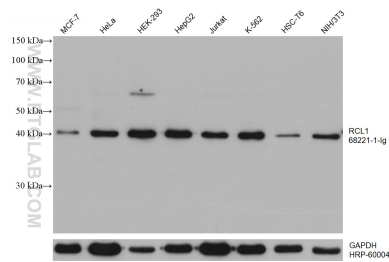
Storage:
Store at -20°C. Stable for one year after shipment.
Storage Buffer:
PBS with 0.02% sodium azide and 50% glycerol pH 7.3.
Aliquoting is unnecessary for -20°C storage

*** 20ul sizes contain 0.1% BSA

For technical support and original validation data for this product please contact:
T: 1 (888) 4PTGLAB (1-888-478-4522) (toll free in USA), or 1(312) 455-8498 (outside USA)
E: proteintech@ptglab.com
W: ptglab.com

This product is exclusively available under Proteintech Group brand and is not available to purchase from any other manufacturer.

Selected Validation Data



Various lysates were subjected to SDS PAGE followed by western blot with 68221-1-Ig (RCL1 antibody) at dilution of 1:20000 and incubated at room temperature for 1.5 hours. The membrane was stripped and reblotted with HRP-conjugated GAPDH Monoclonal antibody (HRP-60004) as loading control.