

# CD59 Monoclonal antibody

Catalog Number: 68222-1-Ig

## Basic Information

<b>Catalog Number:</b> 68222-1-Ig	<b>GenBank Accession Number:</b> BC001506	<b>Purification Method:</b> Protein A purification
<b>Size:</b> 150ul , Concentration: 1000 ug/ml by Nanodrop;	<b>GeneID (NCBI):</b> 966	<b>CloneNo.:</b> 1E3A1
<b>Source:</b> Mouse	<b>UNIPROT ID:</b> P13987	<b>Recommended Dilutions:</b> WB 1:5000-1:50000 IHC 1:500-1:2000 IF-P 1:200-1:800 IF/ICC 1:400-1:1600
<b>Isotype:</b> IgG2b	<b>Full Name:</b> CD59 molecule, complement regulatory protein	
<b>Immunogen Catalog Number:</b> AG32834	<b>Calculated MW:</b> 19 kDa	
	<b>Observed MW:</b> 18-25 kDa	

## Applications

<b>Tested Applications:</b> WB, IHC, IF/ICC, IF-P, ELISA	<b>Positive Controls:</b>
<b>Species Specificity:</b> human	<b>WB :</b> human colostrum, A549 cells, HeLa cells, MCF-7 cells, HepG2 cells, K-562 cells, Jurkat cells, human placenta tissue
<b>Note-IHC: suggested antigen retrieval with TE buffer pH 9.0; (*) Alternatively, antigen retrieval may be performed with citrate buffer pH 6.0</b>	<b>IHC :</b> human placenta tissue, human lung cancer tissue, human urothelial carcinoma tissue
	<b>IF-P :</b> human placenta tissue,
	<b>IF/ICC :</b> BxPC-3 cells,

## Background Information

CD59, also named as MIC11, MIN1, MIN2, MIN3, MSK21, M1RL, MAC1F, HRF20 and 1F5 antigen, is a cell surface molecule glycoprotein with MW 18-25 kDa. It acts as a determinant of proximal-distal cell identity. CD59 acts by binding to the C8 and/or C9 complements of the assembling membrane attack complex (MAC), thereby preventing incorporation of the multiple copies of C9 required for complete formation of the osmolytic pore. It is involved in signal transduction for T-cell activation complexed to a protein tyrosine kinase.

## Storage

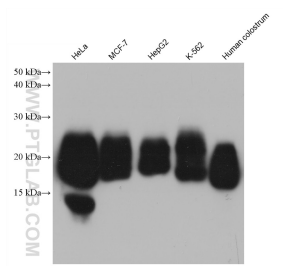
**Storage:**  
Store at -20°C. Stable for one year after shipment.  
**Storage Buffer:**  
PBS with 0.02% sodium azide and 50% glycerol pH 7.3.  
Aliquoting is unnecessary for -20°C storage

\*\*\* 20ul sizes contain 0.1% BSA

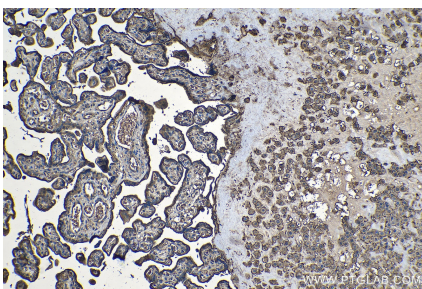
For technical support and original validation data for this product please contact:  
T: 1 (888) 4PTGLAB (1-888-478-4522) (toll free in USA), or 1(312) 455-8498 (outside USA)  
E: [proteintech@ptglab.com](mailto:proteintech@ptglab.com)  
W: [ptglab.com](http://ptglab.com)

This product is exclusively available under Proteintech Group brand and is not available to purchase from any other manufacturer.

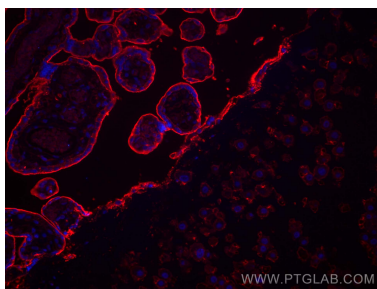
Selected Validation Data



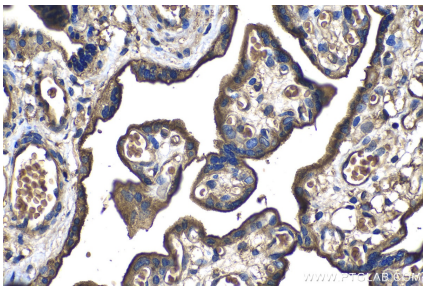
Various lysates were subjected to SDS PAGE followed by western blot with 68222-1-Ig (CD59 antibody) at dilution of 1:20000 incubated at room temperature for 1.5 hours.



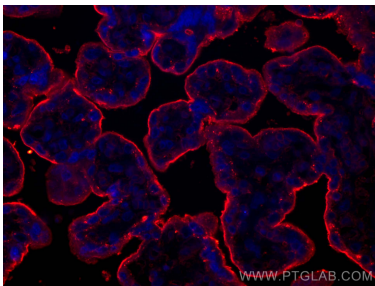
Immunohistochemical analysis of paraffin-embedded human placenta tissue slide using 68222-1-Ig (CD59 antibody) at dilution of 1:1000 (under 10x lens). Heat mediated antigen retrieval with Tris-EDTA buffer (pH 9.0).



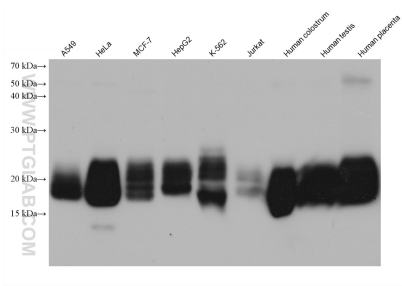
Immunofluorescent analysis of (4% PFA) fixed human placenta tissue using CD59 antibody (68222-1-Ig, Clone: 1E3A1 ) at dilution of 1:400 and CoraLite®594-Conjugated AffiniPure Goat Anti-Mouse IgG(H+L).



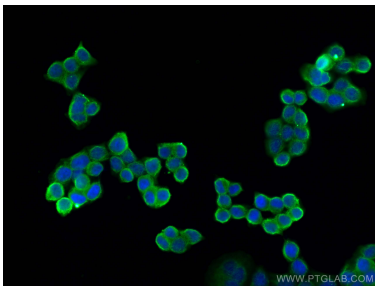
Immunohistochemical analysis of paraffin-embedded human placenta tissue slide using 68222-1-Ig (CD59 antibody) at dilution of 1:1000 (under 40x lens). Heat mediated antigen retrieval with Tris-EDTA buffer (pH 9.0).



Immunofluorescent analysis of (4% PFA) fixed human placenta tissue using CD59 antibody (68222-1-Ig, Clone: 1E3A1 ) at dilution of 1:400 and CoraLite®594-Conjugated AffiniPure Goat Anti-Mouse IgG(H+L).



Various lysates were subjected to SDS PAGE followed by western blot with 68222-1-Ig (CD59 antibody) at dilution of 1:10000 incubated at room temperature for 1.5 hours.



Immunofluorescent analysis of (4% PFA) fixed BxPC-3 cells using CD59 antibody (68222-1-Ig, Clone: 1E3A1 ) at dilution of 1:800 and CoraLite®488-Conjugated AffiniPure Goat Anti-Mouse IgG(H+L).