

For Research Use Only

PDHB Monoclonal antibody

Catalog Number: 68238-1-Ig



Basic Information

Catalog Number:	68238-1-Ig	GenBank Accession Number:	BC000439	Purification Method:	Protein G purification
Size:	150ul, Concentration: 1000 ug/ml by Nanodrop;	GeneID (NCBI):	5162	CloneNo.:	2A7C10
Source:	Mouse	UNIPROT ID:	P11177	Recommended Dilutions:	WB 1:5000-1:50000 IHC 1:500-1:2000 IF/ICC 1:500-1:2000
Isotype:	IgG1	Full Name:	pyruvate dehydrogenase (lipoamide) beta		
Immunogen Catalog Number:	AG6857	Calculated MW:	39 kDa		
		Observed MW:	34 kDa		

Applications

Tested Applications:
WB, IHC, IF/ICC, ELISA

Species Specificity:
human, mouse, rat, pig, rabbit

Note-IHC: suggested antigen retrieval with TE buffer pH 9.0; (*) Alternatively, antigen retrieval may be performed with citrate buffer pH 6.0

Positive Controls:

WB : HeLa cells, HepG2 cells, Jurkat cells, HSC-T6 cells, pig brain tissue, rabbit brain tissue, rat brain tissue, mouse brain tissue, mouse heart tissue

IHC : mouse kidney tissue, rat stomach tissue

IF/ICC : HeLa cells,

Background Information

PDHB (Pyruvate dehydrogenase E1 component subunit beta, mitochondrial) is also named PHE1B. The enzyme, which is found in mitochondria, is one of the component enzymes of the pyruvate dehydrogenase multienzyme complex (PDH). It catalyzes the first reaction of an oxidative decarboxylation sequence converting pyruvate to acetyl-CoA and CO₂(PMID:3422424). Defects in PDHB are the cause of pyruvate dehydrogenase E1-beta deficiency (PDHBD)(PMID:15138885).

Storage

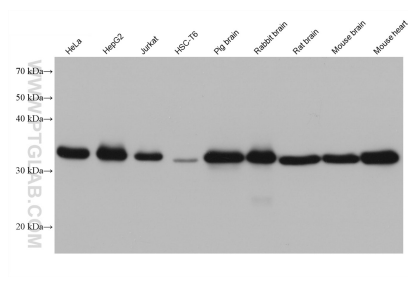
Storage:
Store at -20°C. Stable for one year after shipment.
Storage Buffer:
PBS with 0.02% sodium azide and 50% glycerol pH 7.3.
Aliquoting is unnecessary for -20°C storage

*** 20ul sizes contain 0.1% BSA

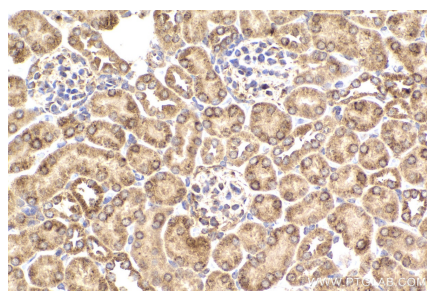
For technical support and original validation data for this product please contact:
T: 1 (888) 4PTGLAB (1-888-478-4522) (toll free in USA), or 1(312) 455-8498 (outside USA)
E: proteintech@ptglab.com
W: ptglab.com

This product is exclusively available under Proteintech Group brand and is not available to purchase from any other manufacturer.

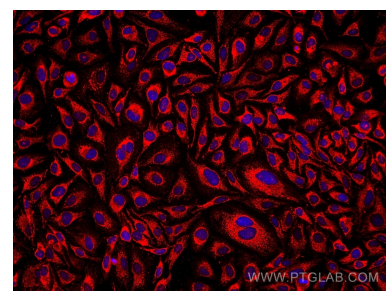
Selected Validation Data



Various lysates were subjected to SDS PAGE followed by western blot with 68238-1-Ig (PDHB antibody) at dilution of 1:10000 incubated at room temperature for 1.5 hours.



Immunohistochemical analysis of paraffin-embedded mouse kidney tissue slide using 68238-1-Ig (PDHB antibody) at dilution of 1:1000 (under 40x lens). Heat mediated antigen retrieval with Tris-EDTA buffer (pH 9.0).



Immunofluorescent analysis of (4% PFA) fixed HeLa cells using PDHB antibody (68238-1-Ig, Clone: 2A7C10) at dilution of 1:1000 and Multi-rAb CoraLite® Plus 594-Goat Anti-Mouse Recombinant Secondary Antibody (H+L) (Cat.NO. RGAM004).