

For Research Use Only

# HSPA6 Monoclonal antibody

Catalog Number: 68257-1-Ig **1 Publications**



## Basic Information

<b>Catalog Number:</b> 68257-1-Ig	<b>GenBank Accession Number:</b> BC035665	<b>Purification Method:</b> Protein A purification
<b>Size:</b> 150ul , Concentration: 1000 ug/ml by Nanodrop;	<b>GeneID (NCBI):</b> 3310	<b>CloneNo.:</b> 3D12D7
<b>Source:</b> Mouse	<b>UNIPROT ID:</b> P17066	<b>Recommended Dilutions:</b> WB 1:5000-1:50000 IF/ICC 1:400-1:1600
<b>Isotype:</b> IgG2b	<b>Full Name:</b> heat shock 70kDa protein 6 (HSP70B)	
<b>Immunogen Catalog Number:</b> AG4716	<b>Calculated MW:</b> 643 aa, 71 kDa	
	<b>Observed MW:</b> 68-71 kDa	

## Applications

<b>Tested Applications:</b> WB, IF/ICC, ELISA	<b>Positive Controls:</b> WB : LNCaP cells, HeLa cells, HEK-293 cells, MCF-7 cells, HepG2 cells IF/ICC : A431 cells,
<b>Cited Applications:</b> WB, IHC	
<b>Species Specificity:</b> Human	
<b>Cited Species:</b> human	

## Background Information

HSPA6 (also known as HSP70B) is a member of the HSPA (HSP70) family of heat-shock proteins which are highly conserved chaperons implicated in protein folding, protein refolding, protein transport, and protein targeting. Human HSP70B is known to be strictly inducible and shows very low or no basal expression levels in most cells. HSPA6 induction has been exploited as a reasonable biomarker of cellular stresses and its mRNA expression levels have been shown to be significantly induced against a variety of cellular stresses. This antibody was raised against the C-terminal region of human HSPA6 and it may cross-react with HSPA1 (HSP70), HSPA1L and HSPA2. (18229458)

## Notable Publications

Author	Pubmed ID	Journal	Application
Xunxia Zhu	37739270	Biochim Biophys Acta Mol Cell Res	WB,IHC

## Storage

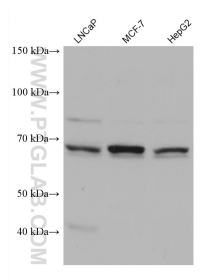
**Storage:**  
Store at -20°C. Stable for one year after shipment.  
**Storage Buffer:**  
PBS with 0.02% sodium azide and 50% glycerol pH 7.3.  
Aliquoting is unnecessary for -20°C storage

\*\*\* 20ul sizes contain 0.1% BSA

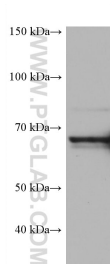
For technical support and original validation data for this product please contact:  
T: 1 (888) 4PTGLAB (1-888-478-4522) (toll free in USA), or 1(312) 455-8498 (outside USA)  
E: [proteintech@ptglab.com](mailto:proteintech@ptglab.com)  
W: [ptglab.com](http://ptglab.com)

This product is exclusively available under Proteintech Group brand and is not available to purchase from any other manufacturer.

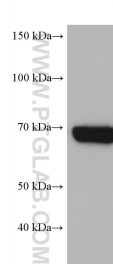
## Selected Validation Data



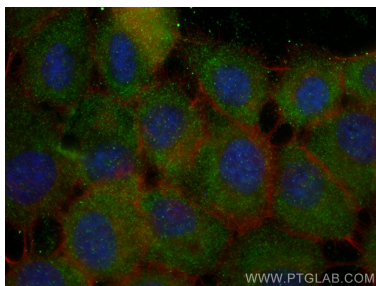
Various lysates were subjected to SDS PAGE followed by western blot with 68257-1-Ig (HSPA6 antibody) at dilution of 1:10000 incubated at room temperature for 1.5 hours.



HeLa cells were subjected to SDS PAGE followed by western blot with 68257-1-Ig (HSPA6 antibody) at dilution of 1:10000 incubated at room temperature for 1.5 hours.



HEK-293 cells were subjected to SDS PAGE followed by western blot with 68257-1-Ig (HSPA6 antibody) at dilution of 1:10000 incubated at room temperature for 1.5 hours.



Immunofluorescent analysis of (-20°C Ethanol) fixed A431 cells using HSPA6 antibody (68257-1-Ig, Clone: 3D12D7 ) at dilution of 1:800 and CoraLite@488-Conjugated Goat Anti-Mouse IgG(H+L), CL594-Phalloidin (red).