

For Research Use Only

LZTFL1 Monoclonal antibody

Catalog Number: 68281-1-Ig



Basic Information

Catalog Number: 68281-1-Ig	GenBank Accession Number: BC025988	Purification Method: Protein A purification
Size: 150ul , Concentration: 1000 ug/ml by Nanodrop;	GeneID (NCBI): 54585	CloneNo.: 2C1F6
Source: Mouse	UNIPROT ID: Q9NQ48	Recommended Dilutions: WB 1:5000-1:50000 IF/ICC 1:400-1:1600
Isotype: IgG2a	Full Name: leucine zipper transcription factor-like 1	
Immunogen Catalog Number: AG10733	Calculated MW: 299 aa, 35 kDa	
	Observed MW: 35 kDa	

Applications

Tested Applications: WB, IF/ICC, FC (Intra), ELISA	Positive Controls:
Species Specificity: Human	WB : HCT 116 cells, LNCaP cells, HEK-293 cells, HeLa cells, Jurkat cells, K-562 cells
	IF/ICC : Jurkat cells,

Background Information

LZTFL1 belongs to the LZTFL1 family. It is an important regulator of BBsome ciliary trafficking and hedgehog signaling. LZTFL1 regulates Ciliary Trafficking of the BBsome and Smoothened.(PMID:22072986)

Storage

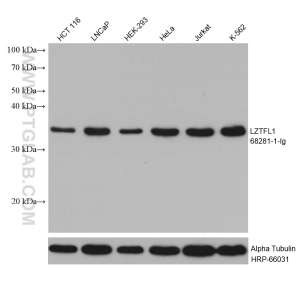
Storage:
Store at -20°C. Stable for one year after shipment.
Storage Buffer:
PBS with 0.02% sodium azide and 50% glycerol pH 7.3.
Aliquoting is unnecessary for -20°C storage

*** 20ul sizes contain 0.1% BSA

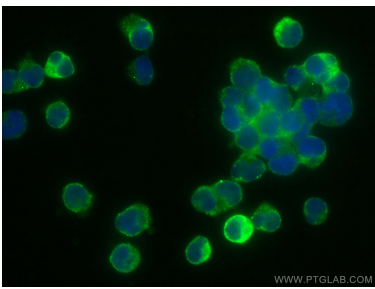
For technical support and original validation data for this product please contact:
T: 1 (888) 4PTGLAB (1-888-478-4522) (toll free in USA), or 1(312) 455-8498 (outside USA)
E: proteintech@ptglab.com
W: ptglab.com

This product is exclusively available under Proteintech Group brand and is not available to purchase from any other manufacturer.

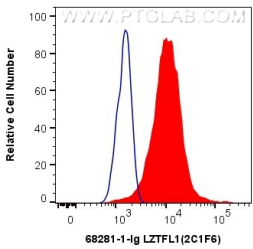
Selected Validation Data



Various lysates were subjected to SDS PAGE followed by western blot with 68281-1-Ig (LZTFL1 antibody) at dilution of 1:10000 incubated at room temperature for 1.5 hours. The membrane was stripped and reblotted with HRP-conjugated Alpha Tubulin Monoclonal antibody (HRP-66031) as loading control.



Immunofluorescent analysis of (4% PFA) fixed Jurkat cells using LZTFL1 antibody (68281-1-Ig, Clone: 2C1F6) at dilution of 1:800 and CoraLite®488-Conjugated AffiniPure Goat Anti-Mouse IgG(H+L).



1X10⁶ Jurkat cells were intracellularly stained with 0.4 ug Anti-Human LZTFL1 (68281-1-Ig, Clone:2C1F6) and CoraLite®488-Conjugated AffiniPure Goat Anti-Mouse IgG(H+L) at dilution 1:1000 (red), or 0.4 ug Mouse IgG2a Isotype Control (C1.18.4) (65208-1-Ig, Clone: C1.18.4) (blue). Cells were fixed with 4% PFA and permeabilized with Flow Cytometry Perm Buffer (PF00011-C).